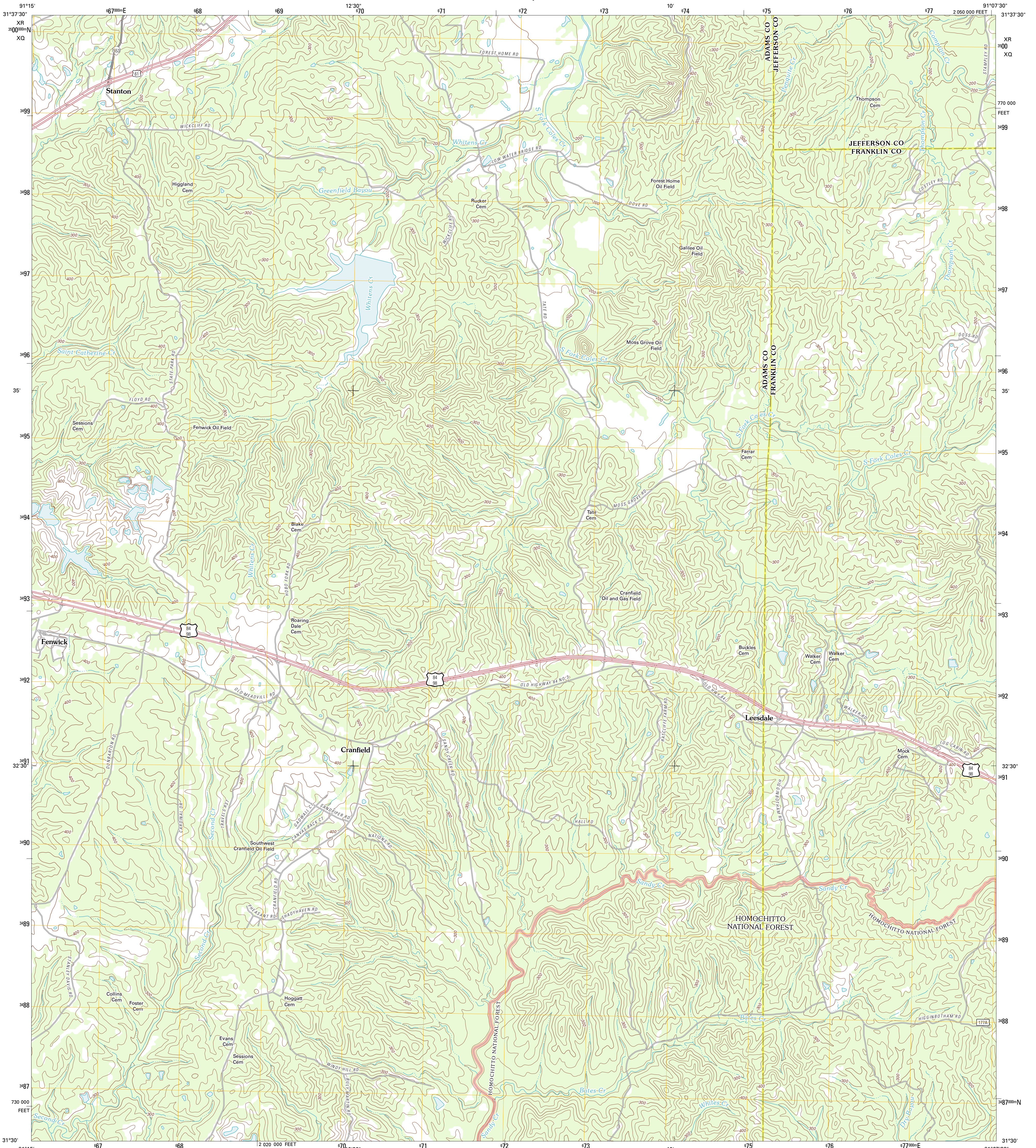




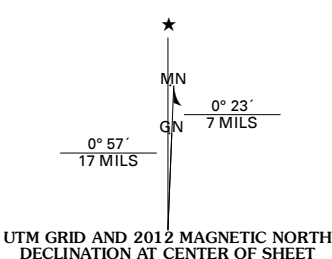
U.S. DEPARTMENT OF THE INTERIOR  
U. S. GEOLOGICAL SURVEY



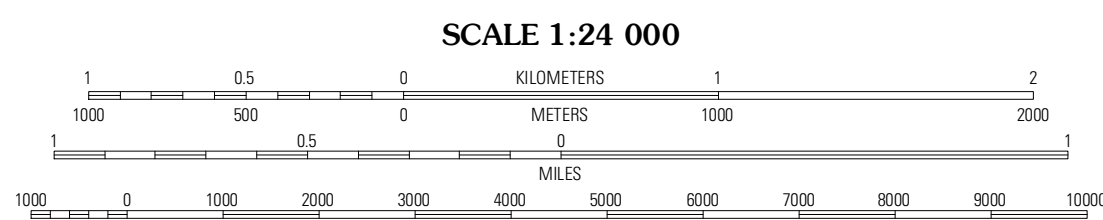
CRANFIELD QUADRANGLE  
MISSISSIPPI  
7.5-MINUTE SERIES



Produced by the United States Geological Survey  
North American Datum of 1983 (NAD83)  
World Geodetic System of 1984 (WGS84). Projection and  
1 000-meter grid: Universal Transverse Mercator, Zone 15R  
10 000-foot ticks: Mississippi Coordinate System of 1983  
(west zone)



U.S. National Grid
100,000-m Square ID
XR 190
XQ 188
Grid Zone Designation
15R



CONTOUR INTERVAL 20 FEET  
NORTH AMERICAN VERTICAL DATUM OF 1988

This map was produced to conform with the  
National Geospatial Program US Topo Product Standard, 2011.  
A metadata file associated with this product is draft version 0.6.2

Imagery.....NAP, August 2010  
Roads.....©2006-2011 TomTom  
Roads within US Forest Service Lands.....FSTopo Data  
with limited Forest Service updates, 2009  
Names.....GNSS, 2011  
Hydrography.....National Hydrography Dataset, 2010  
Contours.....National Elevation Dataset, 2008  
Boundaries.....Census, IBWC, IBC, USGS, 1972 - 2010



QUADRANGLE LOCATION

Pine Ridge	Church Hill	Foyette
Washington	<b>Cranfield</b>	Roxie
Kingston	Jeanette	Knossille

ADJOINING 7.5 QUADRANGLES

**ROAD CLASSIFICATION**

- Interstate Route
- US Route
- Ramp
- State Route
- Local Road
- 4WD
- FS Primary Route
- US Route
- FS Passenger Route
- State Route
- FS High Clearance Route

Check with local Forest Service unit for current travel conditions and restrictions.

CRANFIELD, MS  
2012