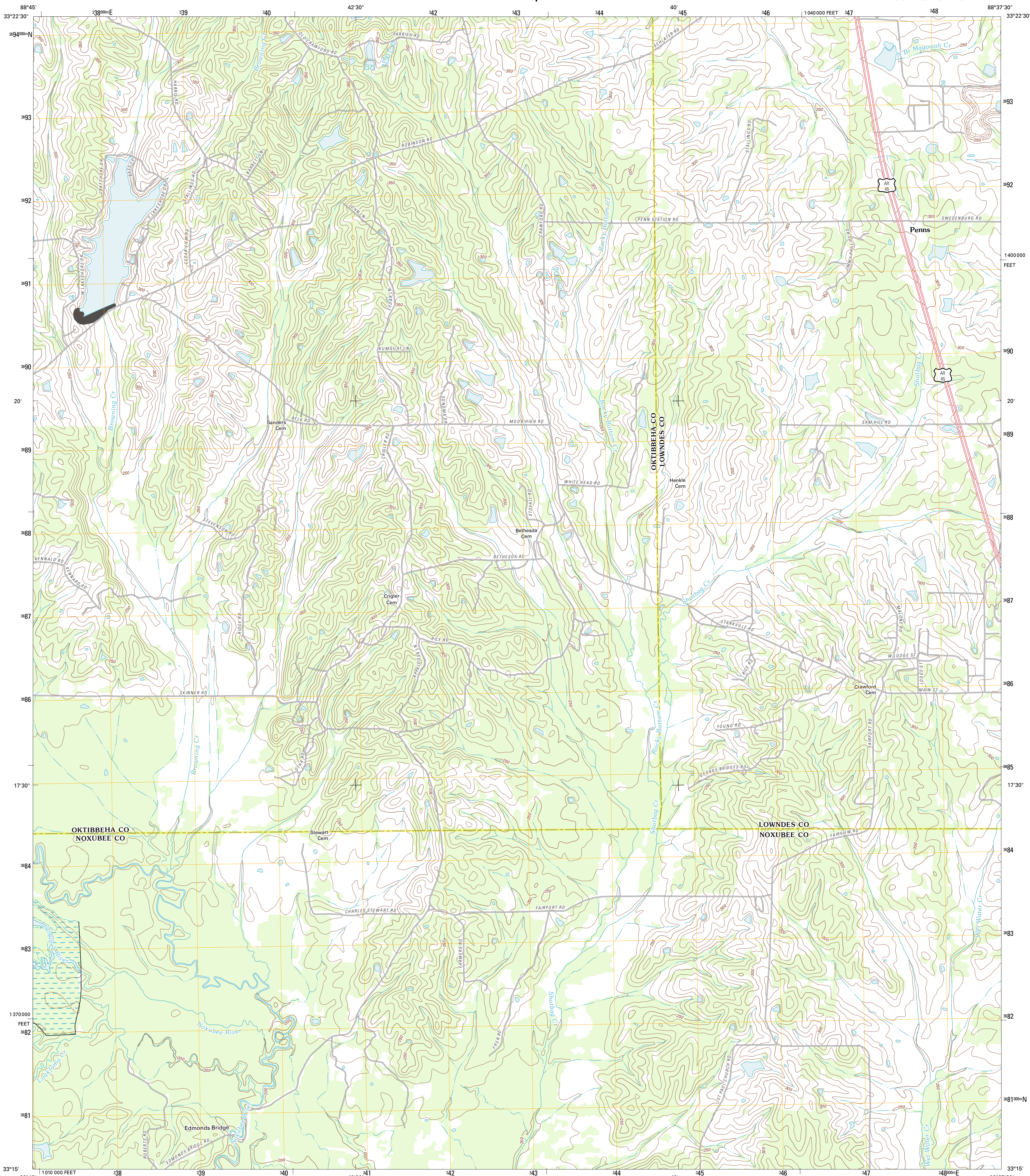




U.S. DEPARTMENT OF THE INTERIOR  
U. S. GEOLOGICAL SURVEY

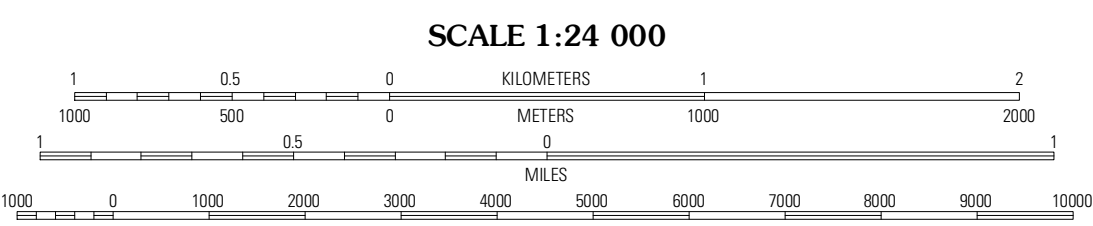
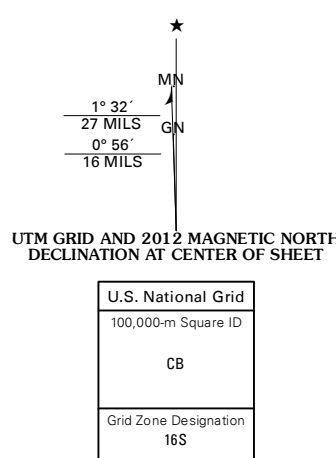


CRAWFORD WEST QUADRANGLE  
MISSISSIPPI  
7.5-MINUTE SERIES

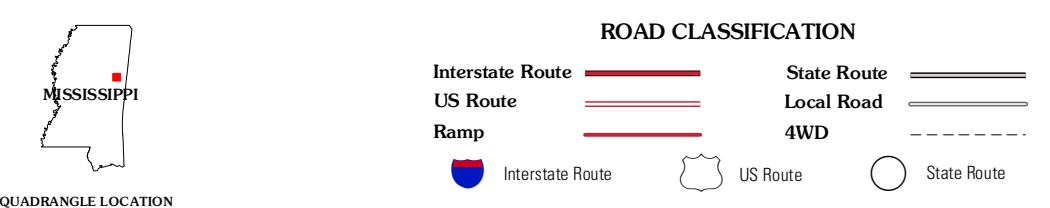


Produced by the United States Geological Survey  
North American Datum of 1983 (NAD83)  
World Geodetic System of 1984 (WGS84). Projection and  
1 000-meter grid: Universal Transverse Mercator, Zone 16S  
(east zone)  
10 000-foot ticks: Mississippi Coordinate System of 1983

Imagery.....NAIP, June 2010  
Roads.....©2006-2011 TomTom  
Names.....GNIS, 2011  
Hydrography.....National Hydrography Dataset, 2010  
Contours.....National Elevation Dataset, 2008  
Boundaries.....Census, IBWC, IBC, USGS, 1972 - 2010



SCALE 1:24 000  
CONTOUR INTERVAL 10 FEET  
NORTH AMERICAN VERTICAL DATUM OF 1988  
This map was produced to conform with the  
National Geospatial Program US Topo Product Standard, 2011.  
A metadata file associated with this product is draft version 0.6.2



QUADRANGLE LOCATION

|            |               |               |
|------------|---------------|---------------|
| Starkville | Amosa         | Bent Oak      |
| Bluff Lake | Crawford West | Crawford East |
| Barge Lake | Lynn Creek    | Brooksville   |

CRAWFORD WEST, MS  
2012

ADJOINING 7.5' QUADRANGLES