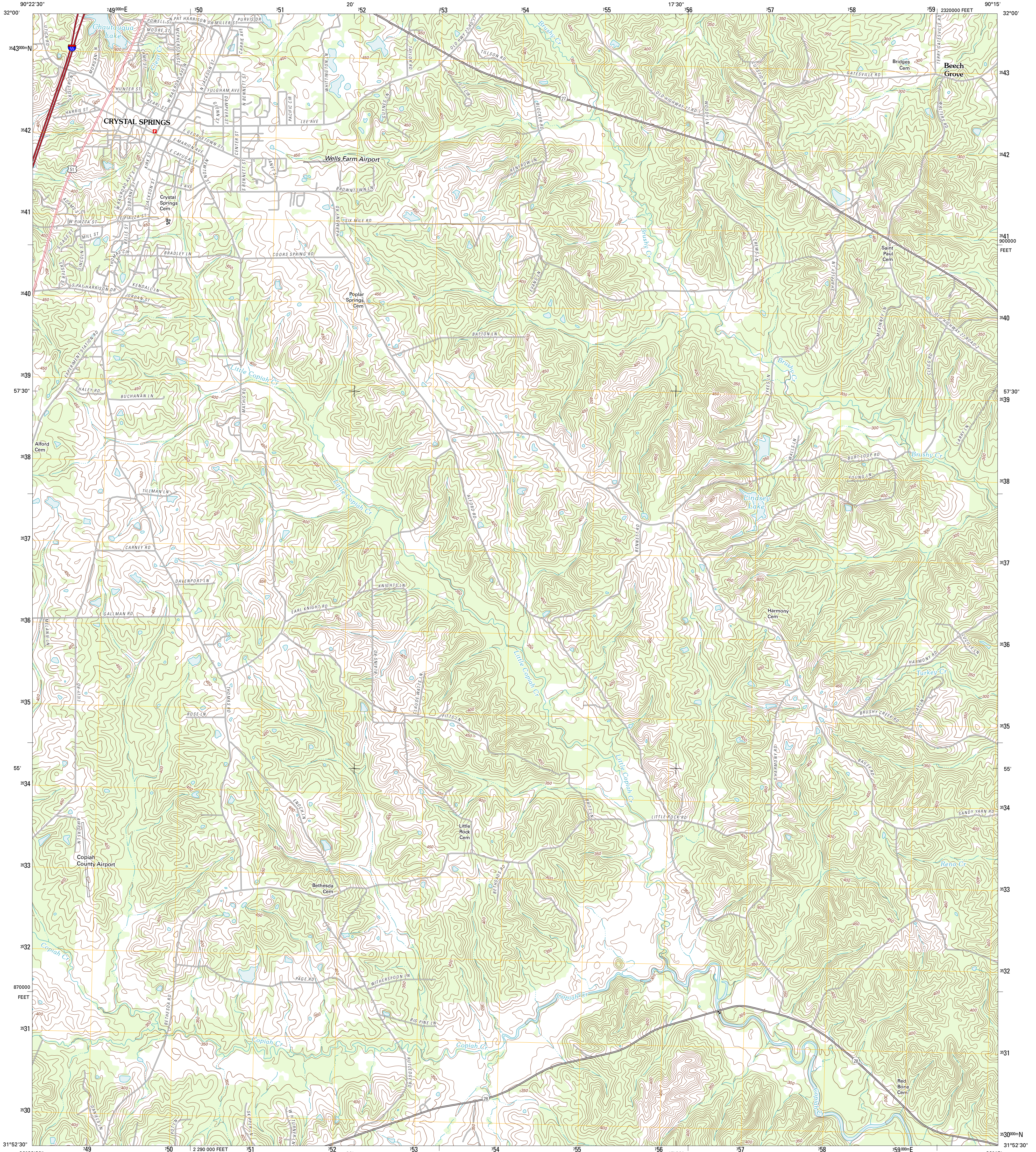




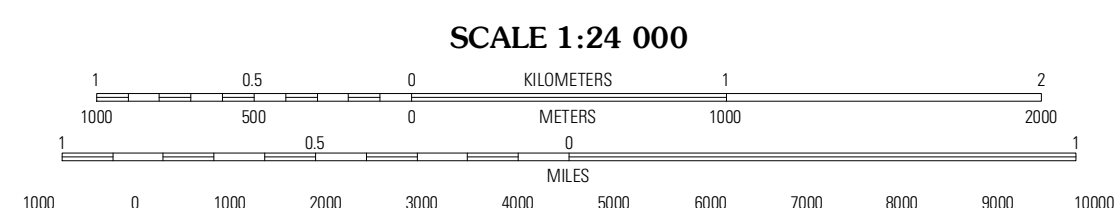
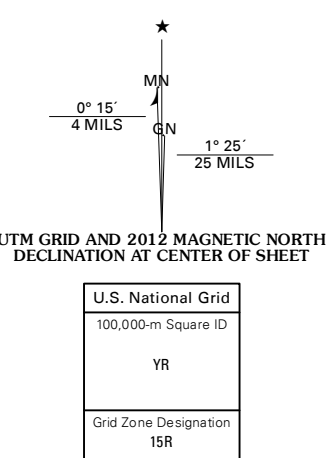
U.S. DEPARTMENT OF THE INTERIOR  
U. S. GEOLOGICAL SURVEY



CRYSTAL SPRINGS QUADRANGLE  
MISSISSIPPI-COPIAH CO.  
7.5-MINUTE SERIES



Produced by the United States Geological Survey  
North American Datum of 1983 (NAD83)  
World Geodetic System of 1984 (WGS84). Projection and  
1 000-meter grid: Universal Transverse Mercator, Zone 15R  
10 000-foot ticks: Mississippi Coordinate System of 1983  
(west zone)



CONTOUR INTERVAL 10 FEET  
NORTH AMERICAN VERTICAL DATUM OF 1988

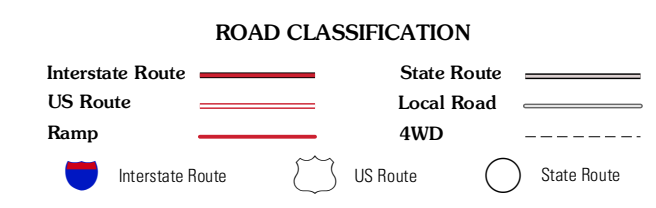
This map was produced to conform with the  
National Geospatial Program US Topo Product Standard, 2011.  
A metadata file associated with this product is draft version 0.6.2



QUADRANGLE LOCATION

Dabney Crossroads	Terry	Whites
Gallman	Crystal Springs	Hopewell
Hucklebust	Shady Grove	Georgetown

ADJOINING 7.5 QUADRANGLES



CRYSTAL SPRINGS, MS  
2012