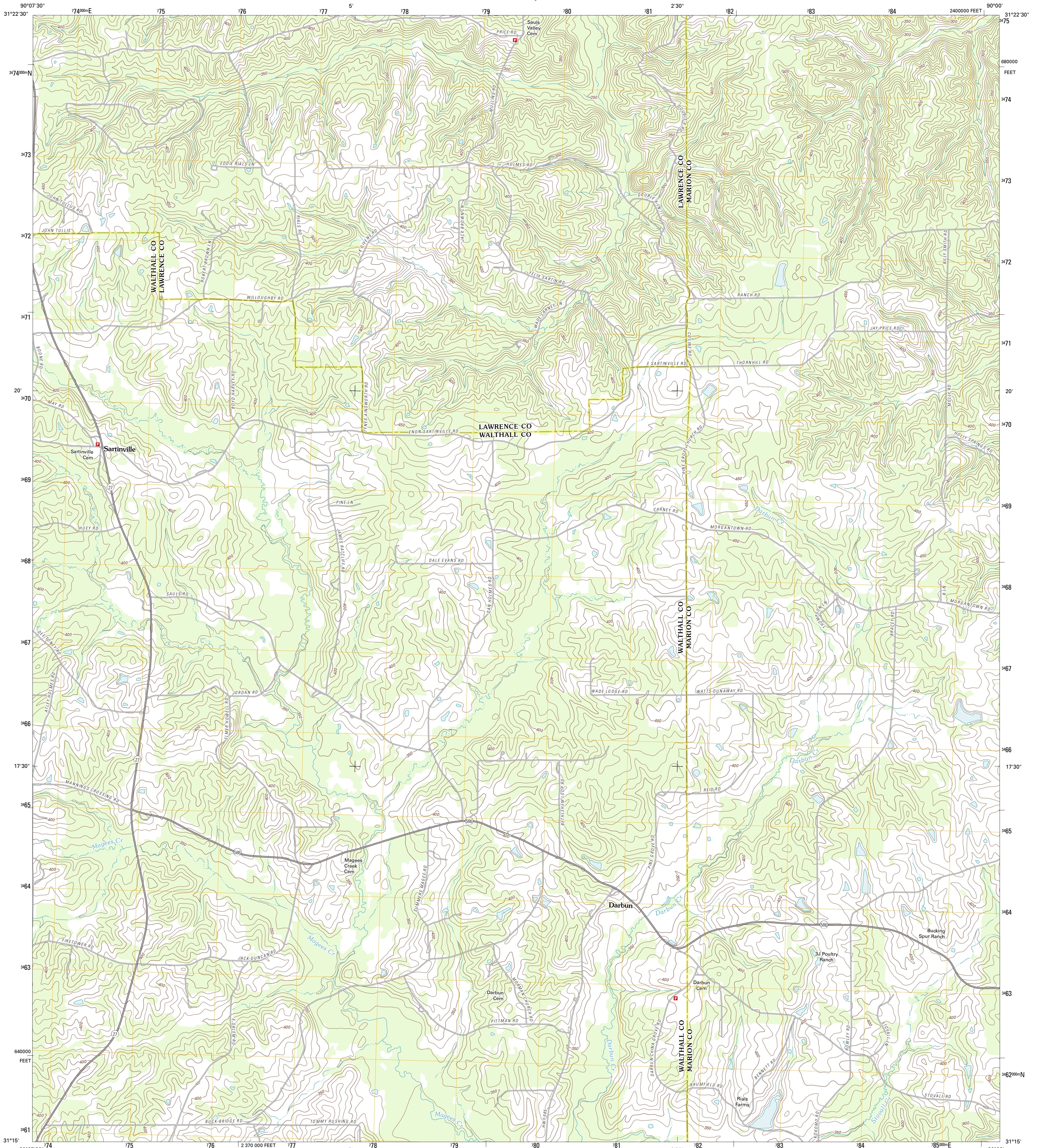




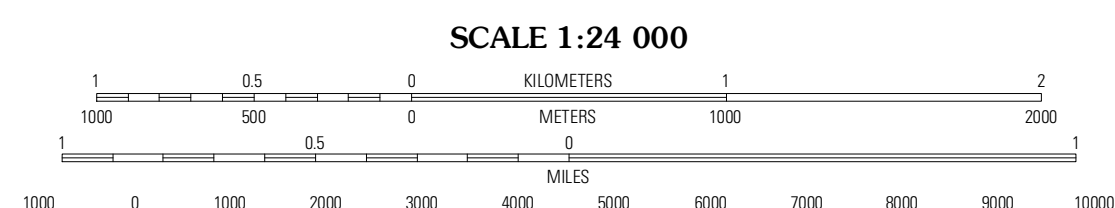
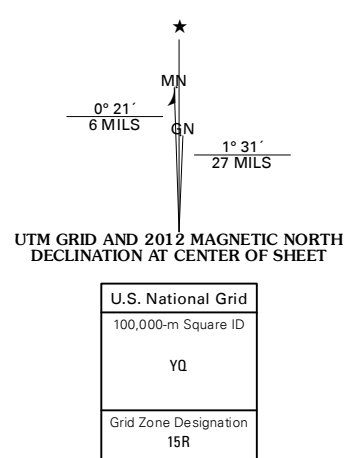
U.S. DEPARTMENT OF THE INTERIOR  
U. S. GEOLOGICAL SURVEY



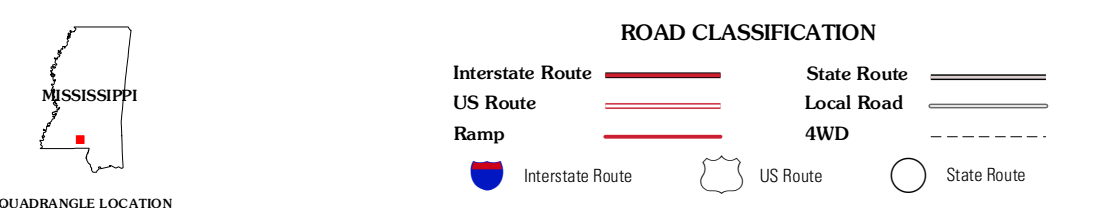
DARBUN QUADRANGLE  
MISSISSIPPI  
7.5-MINUTE SERIES



Produced by the United States Geological Survey  
North American Datum of 1983 (NAD83)  
World Geodetic System of 1984 (WGS84). Projection and  
1 000-meter grid: Universal Transverse Mercator, Zone 15R  
10 000-foot ticks: Mississippi Coordinate System of 1983  
(west zone)



CONTOUR INTERVAL 10 FEET  
NORTH AMERICAN VERTICAL DATUM OF 1988  
This map was produced to conform with the  
National Geospatial Program US Topo Product Standard, 2011.  
A metadata file associated with this product is draft version 0.6.2



QUADRANGLE LOCATION

Topoka	Tifton	Oak Vale
Jayess	<b>Darbun</b>	Morgantown
Mesa	Kokomo	Sandy Hook NW

DARBUN, MS  
2012

ADJOINING 7.5 QUADRANGLES