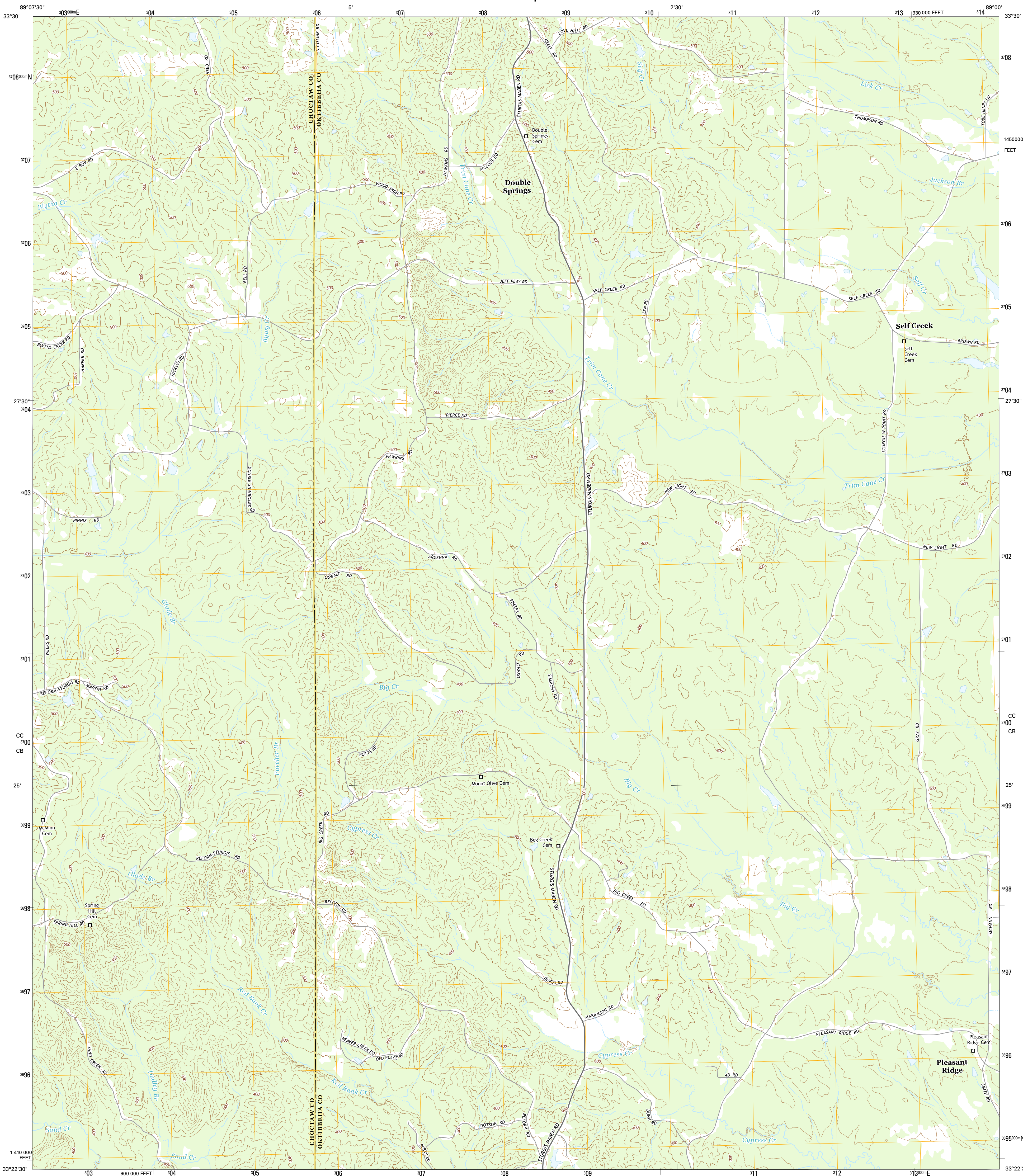




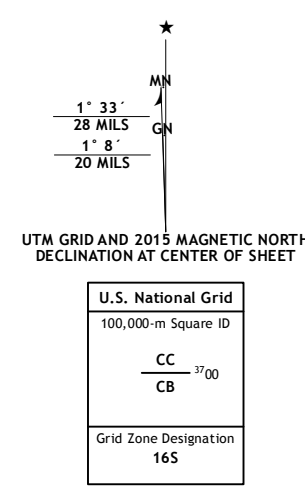
U.S. DEPARTMENT OF THE INTERIOR  
U.S. GEOLOGICAL SURVEY



DOUBLE SPRINGS QUADRANGLE  
MISSISSIPPI  
7.5-MINUTE SERIES



**Produced by the United States Geological Survey**  
 North American Datum of 1983 (NAD83)  
 World Geodetic System of 1984 (WGS84) Projection and  
 1000-meter grid: Universal Transverse Mercator, Zone 16S  
 10 000-foot ticks: Mississippi Coordinate System of 1983 (east  
 zone)  
 This map is not a legal document. Boundaries may be  
 generalized for this map scale. Private lands within government  
 reservations may not be shown. Obtain permission before  
 entering private lands.  
 Imagery.....NAIP, July 2014  
 Roads.....HERE, ©2013 - 2014  
 Names.....GNIS, 2015  
 Hydrography.....National Hydrography Dataset, 2014  
 Contours.....National Elevation Dataset, 2013  
 Boundaries.....Multiple sources; see metadata file 1972 - 2015  
 Public Land Survey System.....BLM, 2015



**ROAD CLASSIFICATION**

|                  |                 |
|------------------|-----------------|
| Expressway       | Local Connector |
| Secondary Hwy    | Local Road      |
| Ramp             | 4WD             |
| Interstate Route | US Route        |
|                  | State Route     |

**ADJOINING QUADRANGLES**

|   |   |   |
|---|---|---|
| 1 | 2 | 3 |
| 4 | 5 | 6 |
| 7 | 8 |   |

1 Sapa  
2 Maben  
3 Phiba  
4 Reform  
5 Longview  
6 Ackerman  
7 Sturgis  
8 Bradley

CONTOUR INTERVAL 20 FEET  
 NORTH AMERICAN VERTICAL DATUM OF 1988  
 This map was produced to conform with the  
 National Geospatial Program US Topo Product Standard, 2011.  
 A metadata file associated with this product is draft version 0.6.18

DOUBLE SPRINGS, MS  
2015

