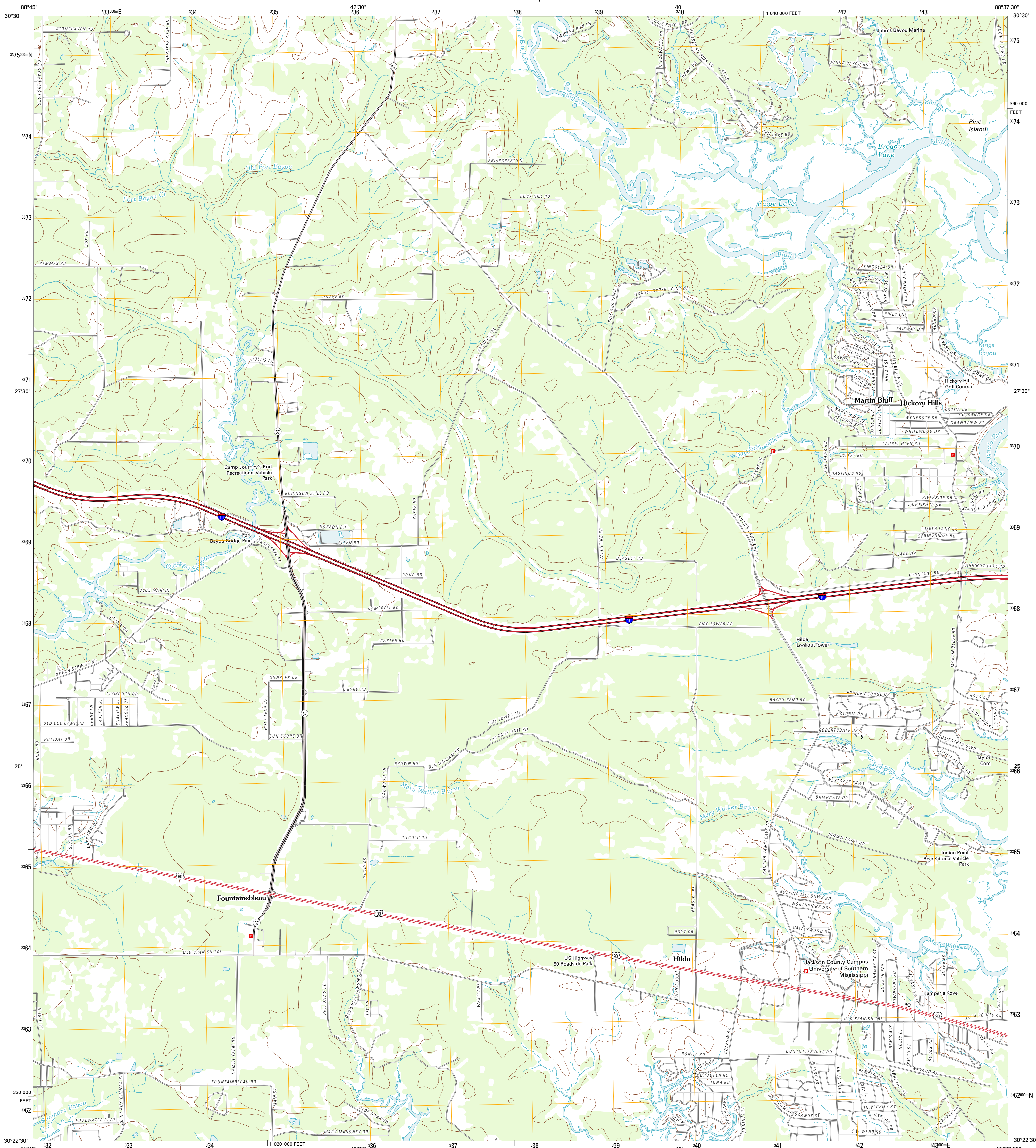




U.S. DEPARTMENT OF THE INTERIOR
U. S. GEOLOGICAL SURVEY

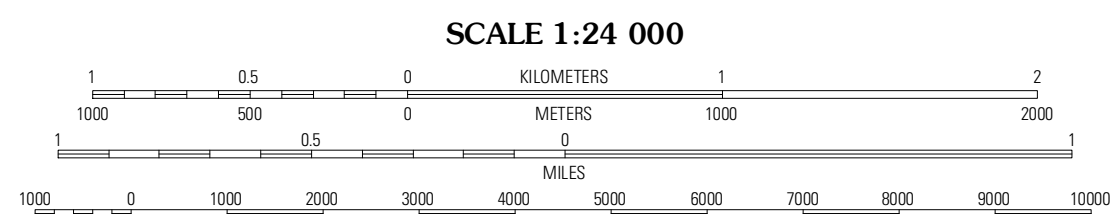
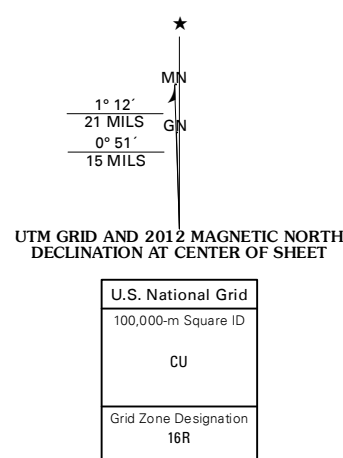


GAUTIER NORTH QUADRANGLE
MISSISSIPPI-JACKSON CO.
7.5-MINUTE SERIES

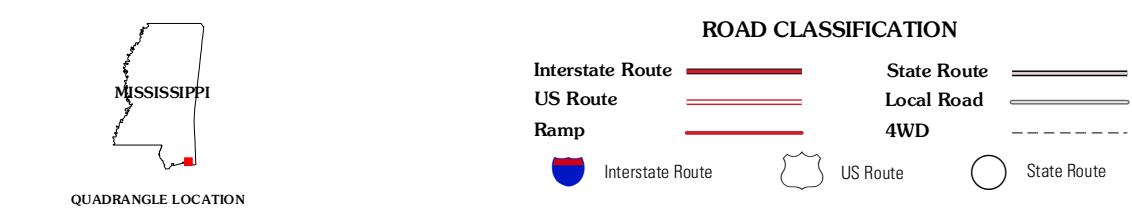


Produced by the United States Geological Survey
North American Datum of 1983 (NAD83)
World Geodetic System of 1984 (WGS84) Projection and
1 000-meter grid; Universal Transverse Mercator, Zone 16R
10 000-foot ticks; Mississippi Coordinate System of 1983
(east zone)

Imagery: NADP, August 2010
Roads: ©2006-2011 TomTom
Names: GNIS, 2011
Hydrography: National Hydrography Dataset, 2010
Contours: National Elevation Dataset, 2008
Boundaries: Census, IBWC, IBC, USGS, 1972 - 2010



CONTOUR INTERVAL 10 FEET
NORTH AMERICAN VERTICAL DATUM OF 1988
This map was produced to conform with the
National Geospatial Program US Topo Product Standard, 2011.
A metadata file associated with this product is draft version 0.6.2



QUADRANGLE LOCATION

Ladner	Vanclave	Three Rivers
Ocean Springs	Gautier North	Pascagoula North
Deer Island	Gautier South	Pascagoula South

GAUTIER NORTH, MS
2012

ADJOINING 7.5 QUADRANGLES