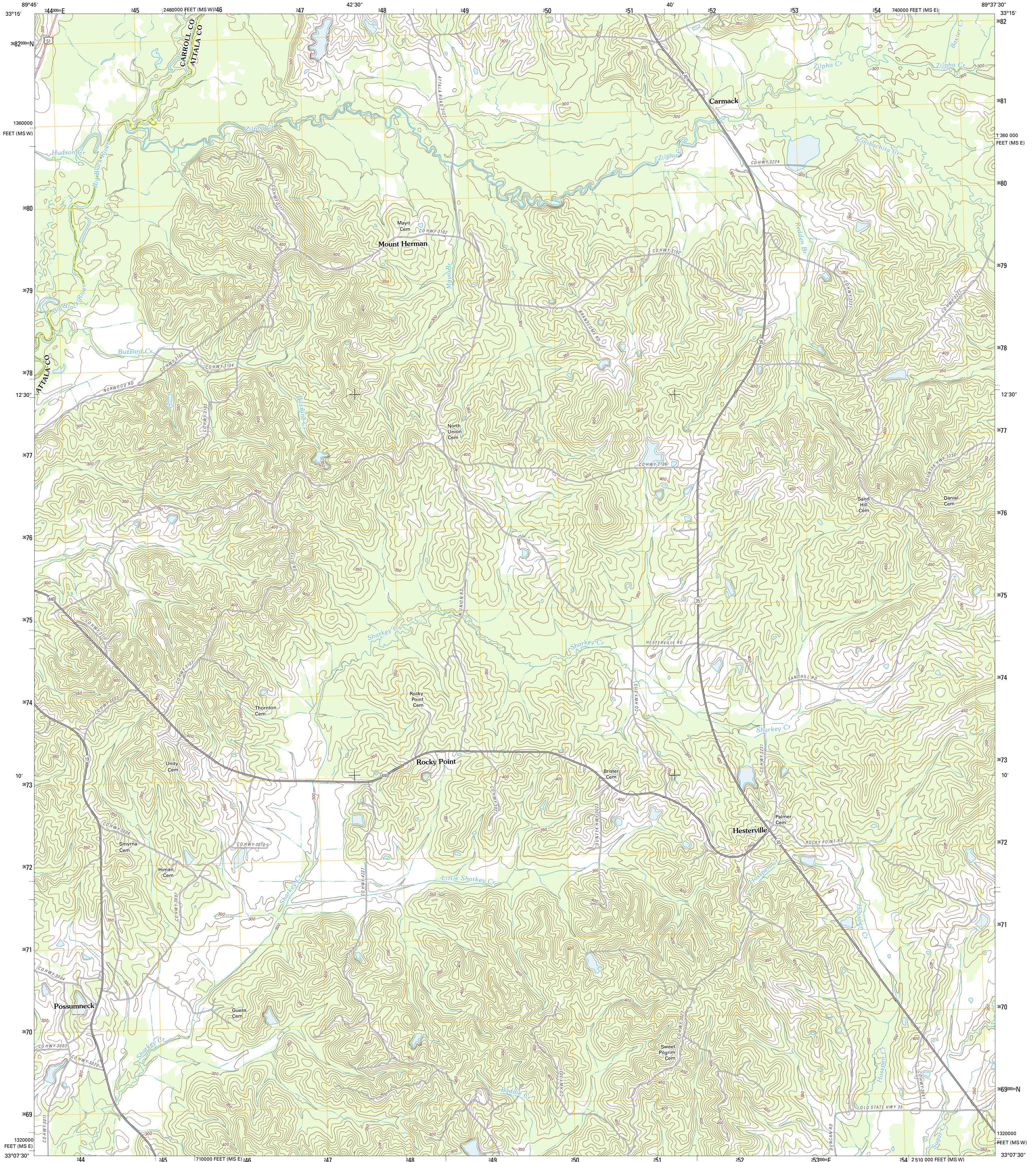




U.S. DEPARTMENT OF THE INTERIOR  
U. S. GEOLOGICAL SURVEY

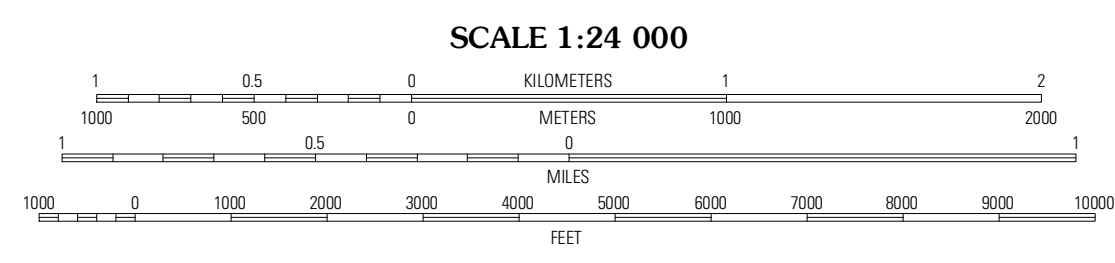
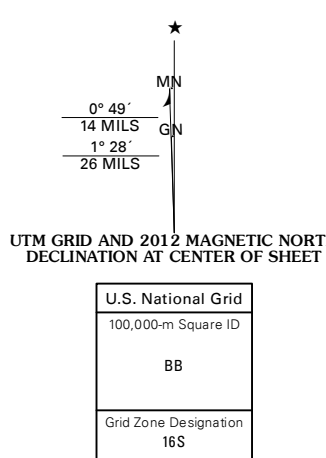


HESTERVILLE QUADRANGLE  
MISSISSIPPI  
7.5-MINUTE SERIES

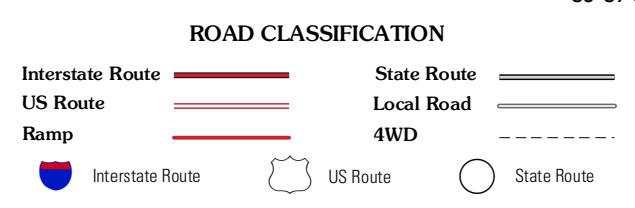
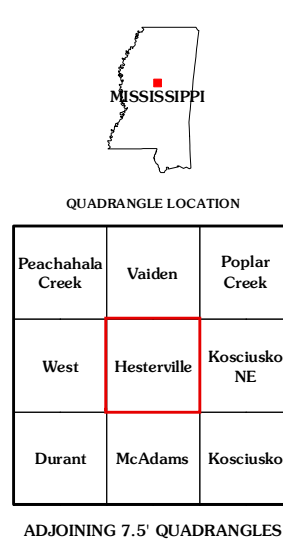


Produced by the United States Geological Survey  
North American Datum of 1983 (NAD83)  
World Geodetic System of 1984 (WGS84), Projection and  
1 000-meter grid; Universal Transverse Mercator, Zone 16S  
10 000-foot ticks; Mississippi Coordinate System of 1983  
(east and west zones)

Imagery.....NAIP, July 2010 - August 2010  
Roads.....©2006-2011 TomTom  
Names.....GNIS, 2011  
Hydrography.....National Hydrography Dataset, 2010  
Contours.....National Elevation Dataset, 2008  
Boundaries.....Census, IBWC, IBC, USGS, 1972 - 2010



SCALE 1:24 000  
CONTOUR INTERVAL 10 FEET  
NORTH AMERICAN VERTICAL DATUM OF 1988  
This map was produced to conform with the  
National Geospatial Program US Topo Product Standard, 2011.  
A metadata file associated with this product is draft version 0.6.2



HESTERVILLE, MS  
2012

ADJOINING 7.5' QUADRANGLES