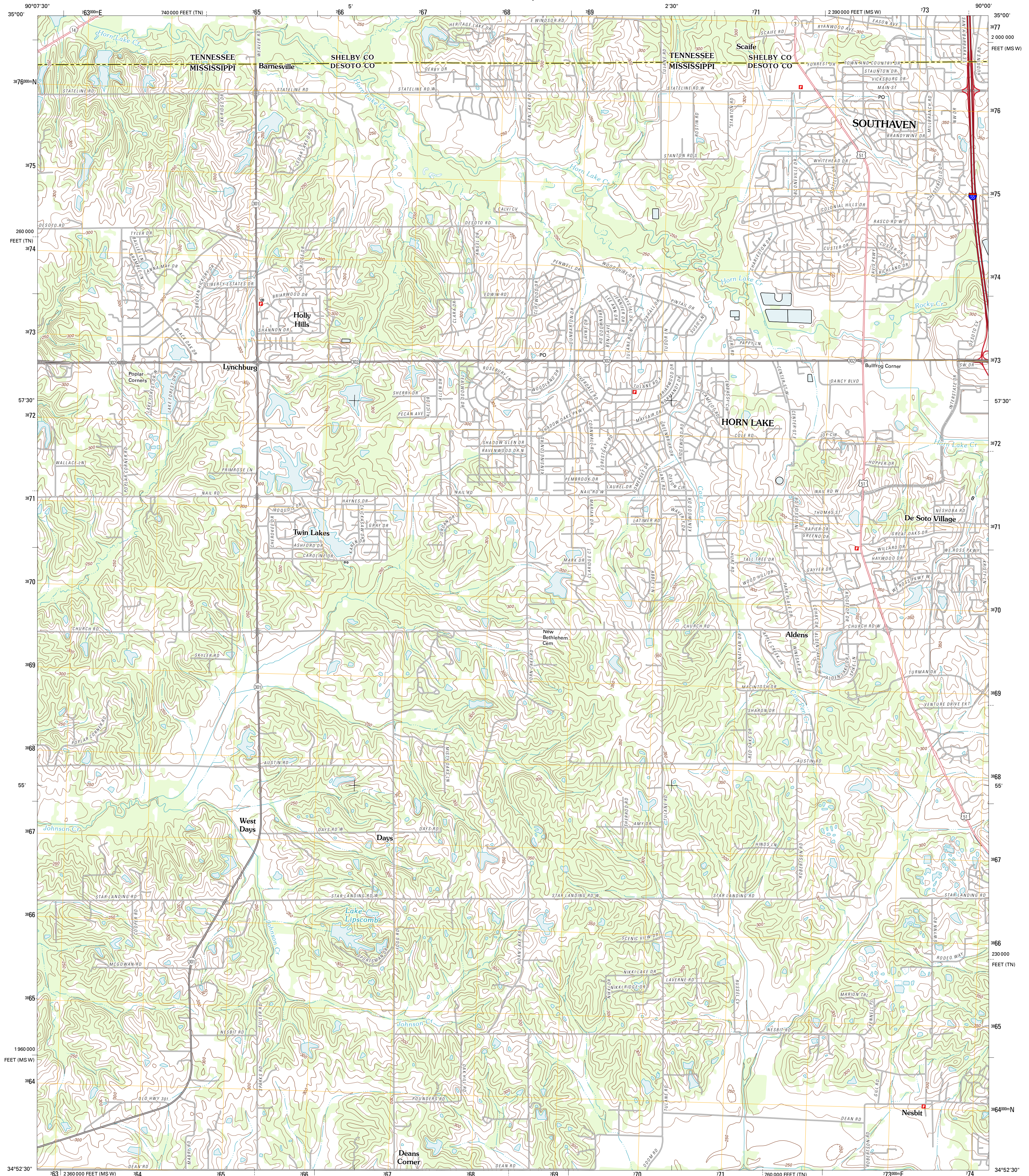




U.S. DEPARTMENT OF THE INTERIOR  
U. S. GEOLOGICAL SURVEY

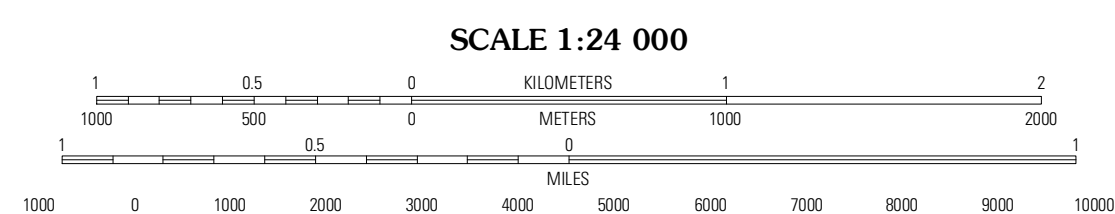
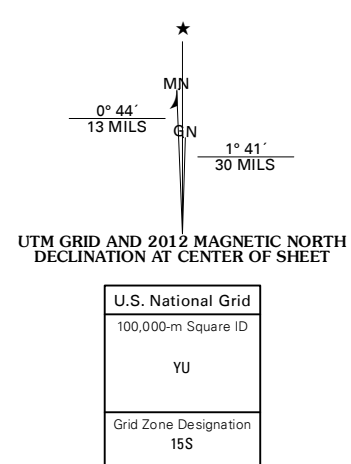


HORN LAKE QUADRANGLE  
MISSISSIPPI-TENNESSEE  
7.5-MINUTE SERIES



Produced by the United States Geological Survey  
North American Datum of 1983 (NAD83)  
World Geodetic System of 1984 (WGS84). Projection and  
1 000-meter grid: Universal Transverse Mercator, Zone 15S  
10 000-foot ticks: Mississippi Coordinate System of 1983  
(west zone), Tennessee Coordinate System of 1983

Imagery.....N.A.P., July 2010  
Roads.....©2006-2011 TomTom  
Names.....GNIS, 2011  
Hydrography.....National Hydrography Dataset, 2010  
Contours.....National Elevation Dataset, 2001  
Boundaries.....Census, IBWC, IBC, USGS, 1972 - 2010



CONTOUR INTERVAL 10 FEET  
NORTH AMERICAN VERTICAL DATUM OF 1988

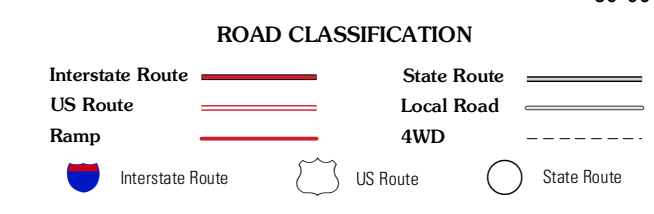
This map was produced to conform with the National Geospatial Program US Topo Product Standard, 2011. A metadata file associated with this product is draft version 0.6.2



QUADRANGLE LOCATION

Fletcher Lake	Southwest Memphis	Southeast Memphis
Lake Comarant	Horn Lake	Pleasant Hill
Banks	Frees Corners	Hernando

ADJOINING 7.5' QUADRANGLES



HORN LAKE, MS-TN  
2012