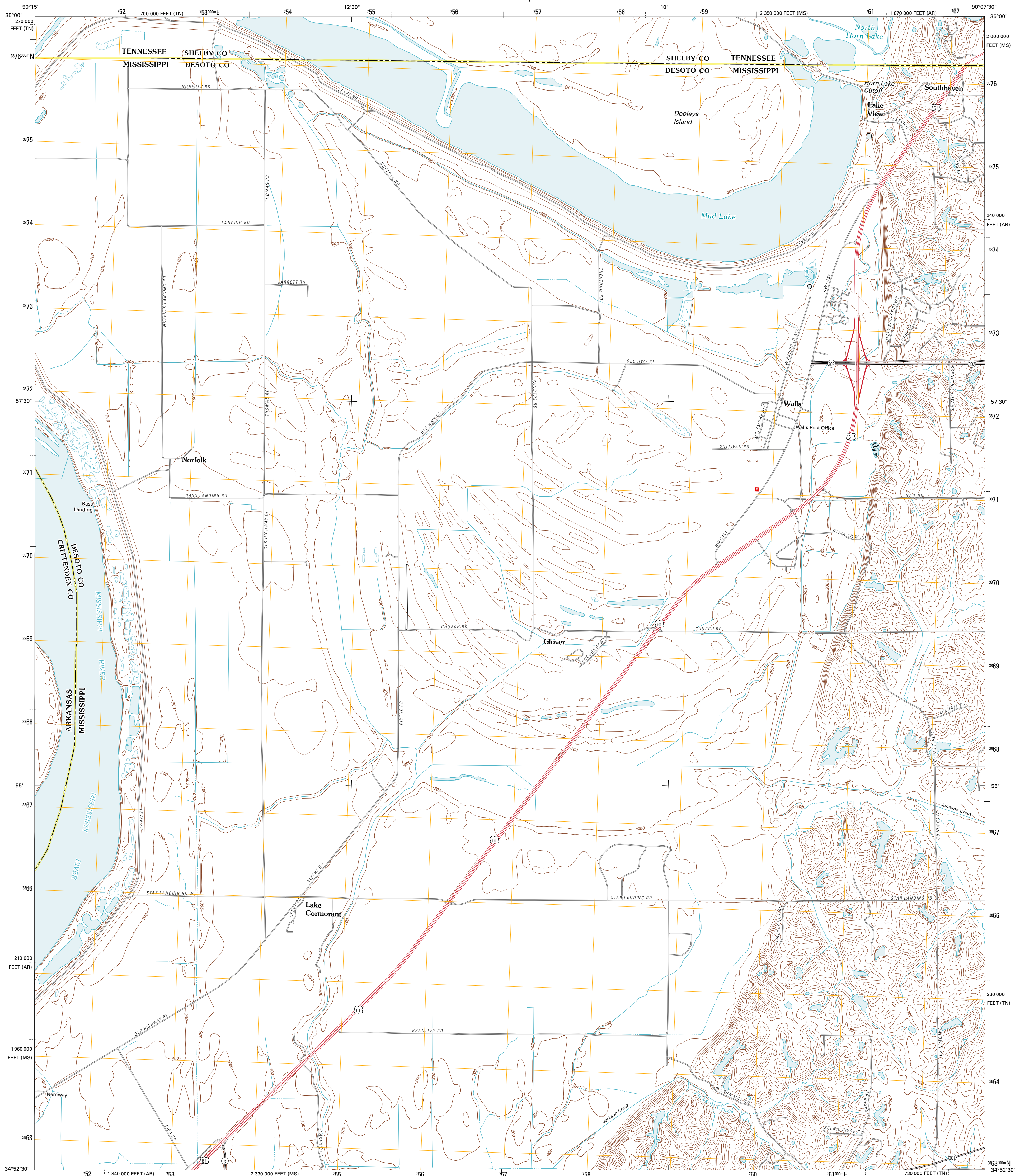




U.S. DEPARTMENT OF THE INTERIOR  
U. S. GEOLOGICAL SURVEY

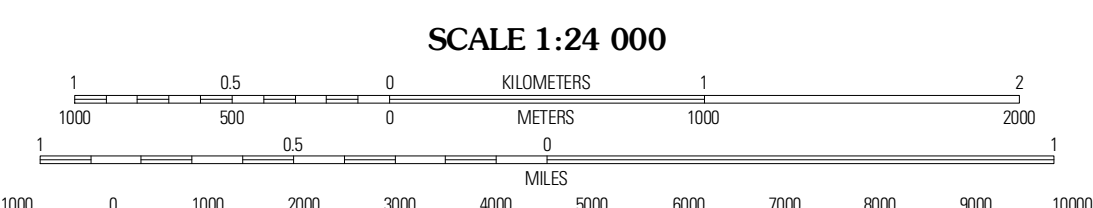
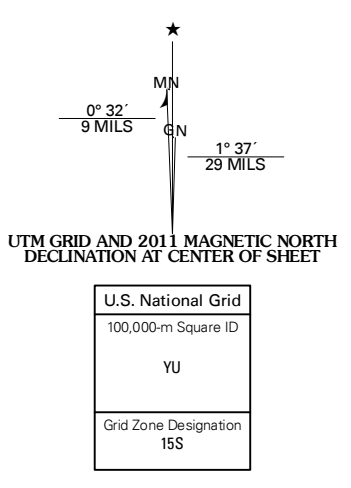


LAKE CORMORANT QUADRANGLE  
MISSISSIPPI-TENNESSEE-ARKANSAS  
7.5-MINUTE SERIES



Produced by the United States Geological Survey  
North American Datum of 1983 (NAD83)  
World Geodetic System of 1984 (WGS84). Projection and  
1 000-meter grid: Universal Transverse Mercator, Zone 15S  
10 000-foot ticks: Mississippi Coordinate System of 1983  
(west zone), Tennessee Coordinate System of 1983, Arkansas  
Coordinate System of 1983 (north zone)

Imagery: N.A.P., July 2009  
Roads: ©2006-2010 Tele Atlas  
Names: ©2006-2010 GNS, 2010  
Hydrography: National Hydrography Dataset, 2009  
Contours: National Elevation Dataset, 2001  
Boundaries: Census, IBWC, IBC, USGS, 1972 - 2010



CONTOUR INTERVAL 10 FEET  
NORTH AMERICAN VERTICAL DATUM OF 1988

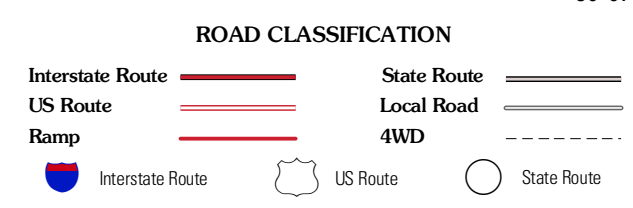
This map was produced to conform with version 0.5.10  
of the USGS US Topo Product Standard.  
A metadata file associated with this product is draft version 0.5.16



QUADRANGLE LOCATION

|                |                |                   |
|----------------|----------------|-------------------|
| Edmondson      | Fletcher Lake  | Southwest Memphis |
| Horseshoe Lake | Lake Cormorant | Horn Lake         |
| Robinsonville  | Banks          | Frees Corners     |

ADJOINING 7.5 QUADRANGLES



LAKE CORMORANT, MS-TN-AR  
2011