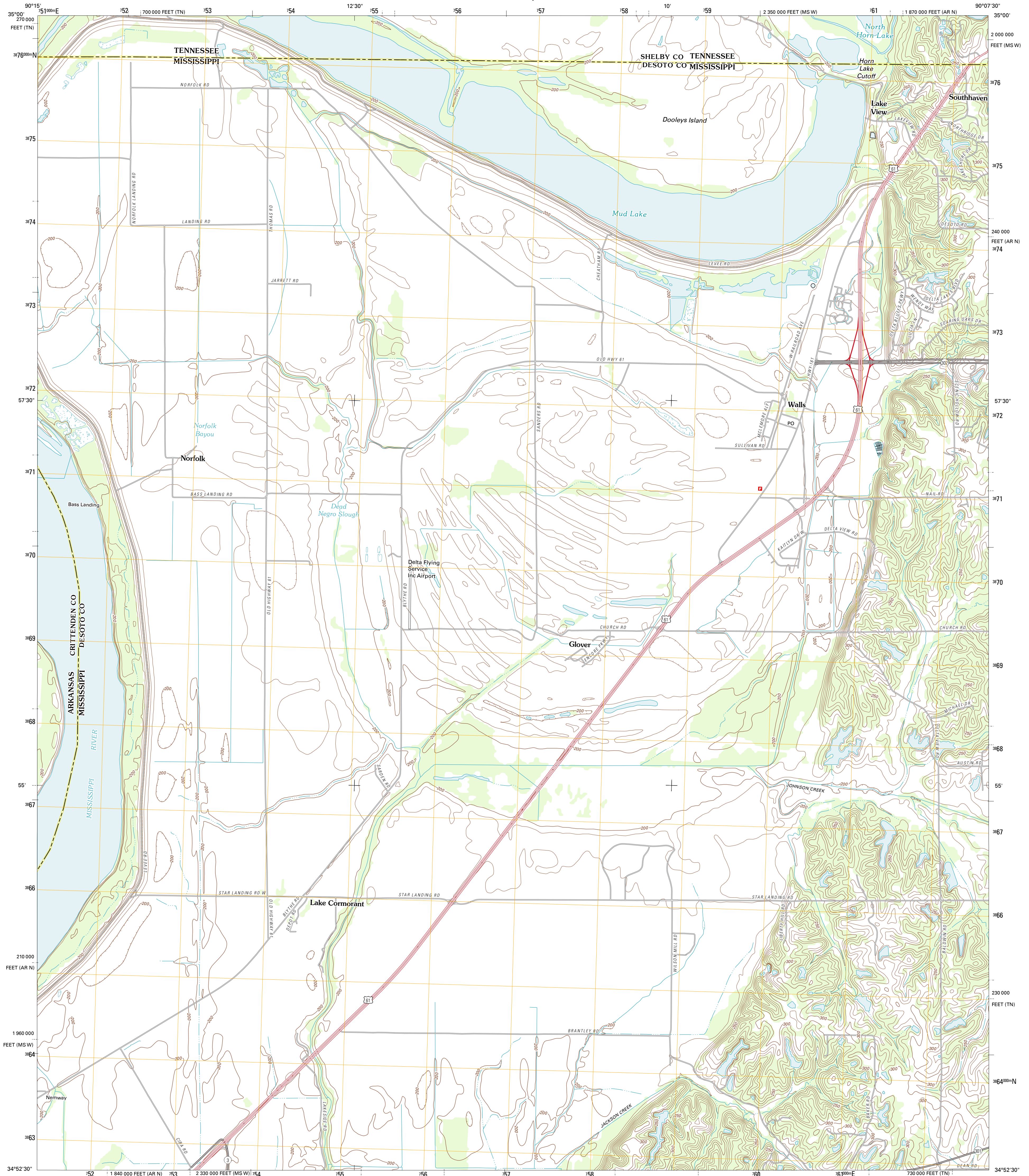




U.S. DEPARTMENT OF THE INTERIOR
U. S. GEOLOGICAL SURVEY

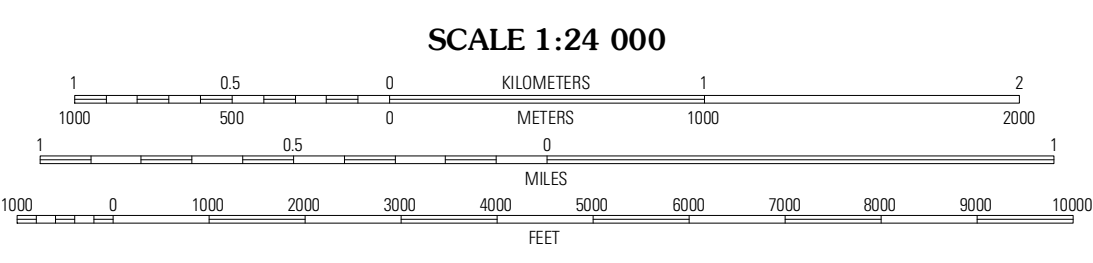
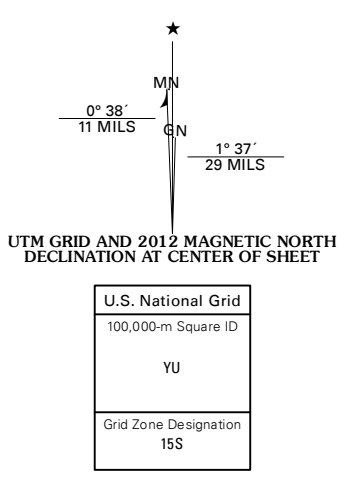


LAKE CORMORANT QUADRANGLE
MISSISSIPPI-TENNESSEE-ARKANSAS
7.5-MINUTE SERIES



Produced by the United States Geological Survey
North American Datum of 1983 (NAD83)
World Geodetic System of 1984 (WGS84). Projection and
World meter grid: Universal Transverse Mercator, Zone 15S
10 000-foot ticks: Mississippi Coordinate System of 1983
(west zone), Tennessee Coordinate System of 1983, Arkansas
Coordinate System of 1983 (north zone)

Imagery: N.A.P., July 2010
Roads: 02/2006-2011 TomTom
Names: GNIS, 2011
Hydrography: National Hydrography Dataset, 2010
Contours: National Elevation Dataset, 2001
Boundaries: Census, IBWC, IBC, USGS, 1972 - 2010

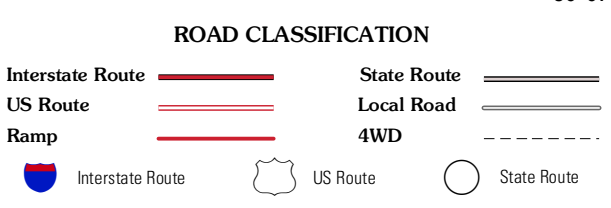


CONTOUR INTERVAL 10 FEET
NORTH AMERICAN VERTICAL DATUM OF 1988
This map was produced to conform with the
National Geospatial Program US Topo Product Standard, 2011.
A metadata file associated with this product is draft version 0.6.2



QUADRANGLE LOCATION

Edmondson	Fletcher Lake	Southwest Memphis
Horseshoe Lake	Lake Cormorant	Horn Lake
Robinsonville	Banks	Frees Corners



LAKE CORMORANT, MS-TN-AR
2012

ADJOINING 7.5' QUADRANGLES