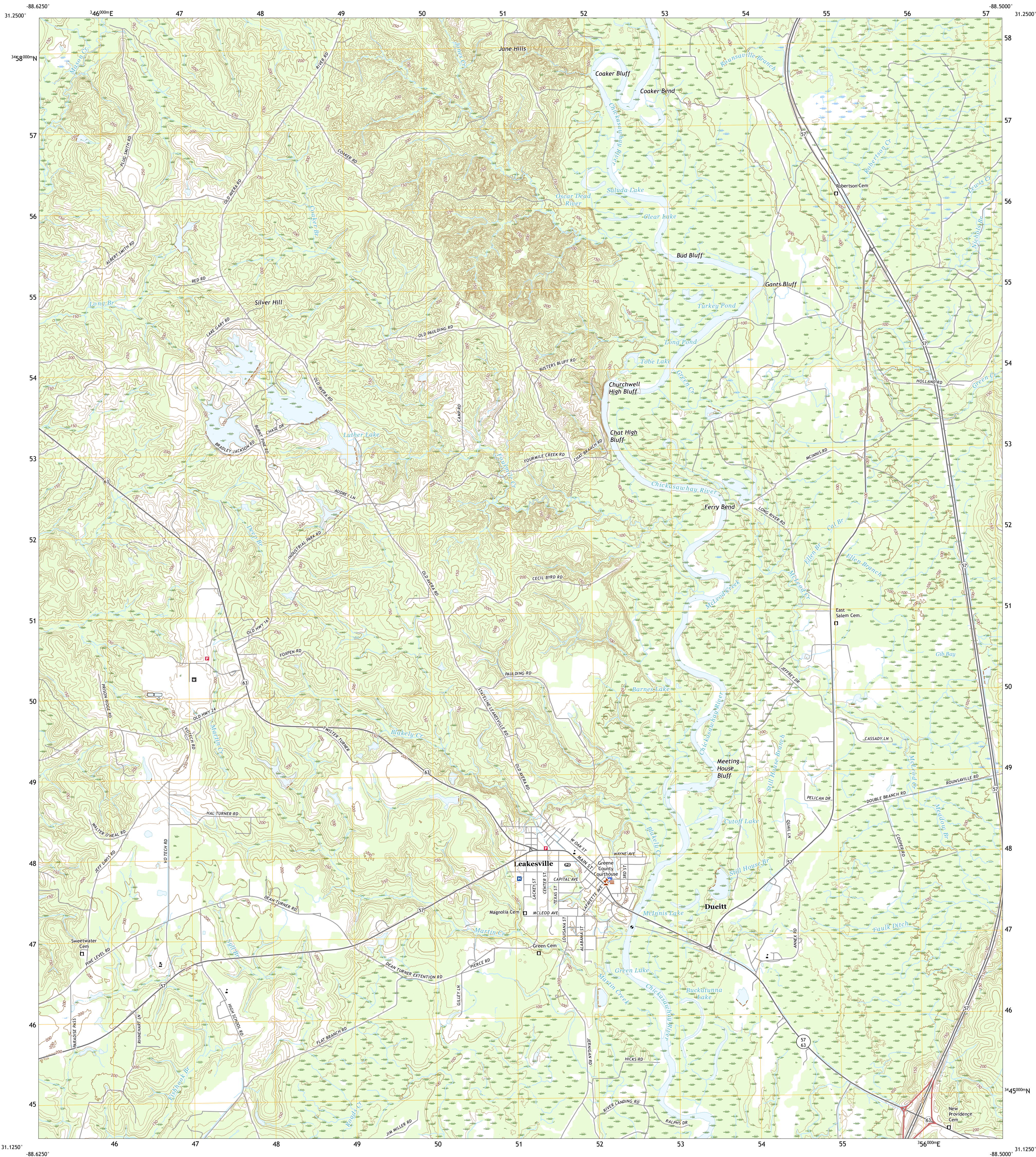




U.S. DEPARTMENT OF THE INTERIOR
U.S. GEOLOGICAL SURVEY



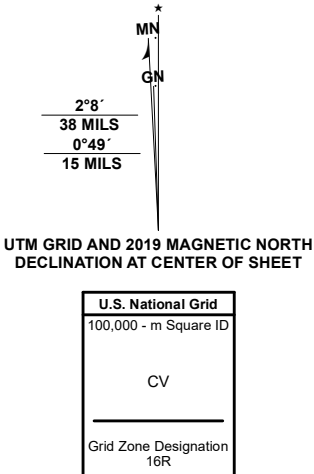
LEAKESVILLE QUADRANGLE
MISSISSIPPI - GREENE COUNTY
7.5-MINUTE SERIES



Produced by the United States Geological Survey

North American Datum of 1983 (NAD83)
World Geodetic System of 1984 (WGS84) Projection and
1 000-meter grid/Universal Transverse Mercator, Zone 16R
This map is not a legal document. Boundaries may be
generalized for this map scale. Private lands within government
reservations may not be shown. Obtain permission before
entering private lands.

ImageryNAIP	December	2020
RoadsU.S. Census Bureau	2017	
NamesGNIS	1980	2020
HydrographyNational Hydrography Dataset	2018	
ContoursNational Elevation Dataset	2016	
BoundariesMultiple sources: see metadata file	2018	2019
Public Land Survey SystemBLM	2017	
WetlandsFWS National Wetlands Inventory	Not Available	



CONTOUR INTERVAL 10 FEET
NORTH AMERICAN VERTICAL DATUM OF 1988
This map was produced to conform with the
National Geospatial Program US Topo Product Standard, 2011.
A metadata file associated with this product is draft version 0.6.18



1	2	3
4	5	6
7	8	9

ADJOINING QUADRANGLES

1 Avera
2 Clark
3 Fruitdale
4 Jonathan
5 Leakesville
6 Leakesville SW
7 Vernal
8 Brown Town

ROAD CLASSIFICATION		
Expressway	Local Connector	
Secondary Hwy	Local Road	
Ramp	4WD	
Interstate Route	US Route	State Route

LEAKESVILLE, MS
2020



NSN 1643016375166
USGS REF. NO. USGS X 2 4 K 2 3 3