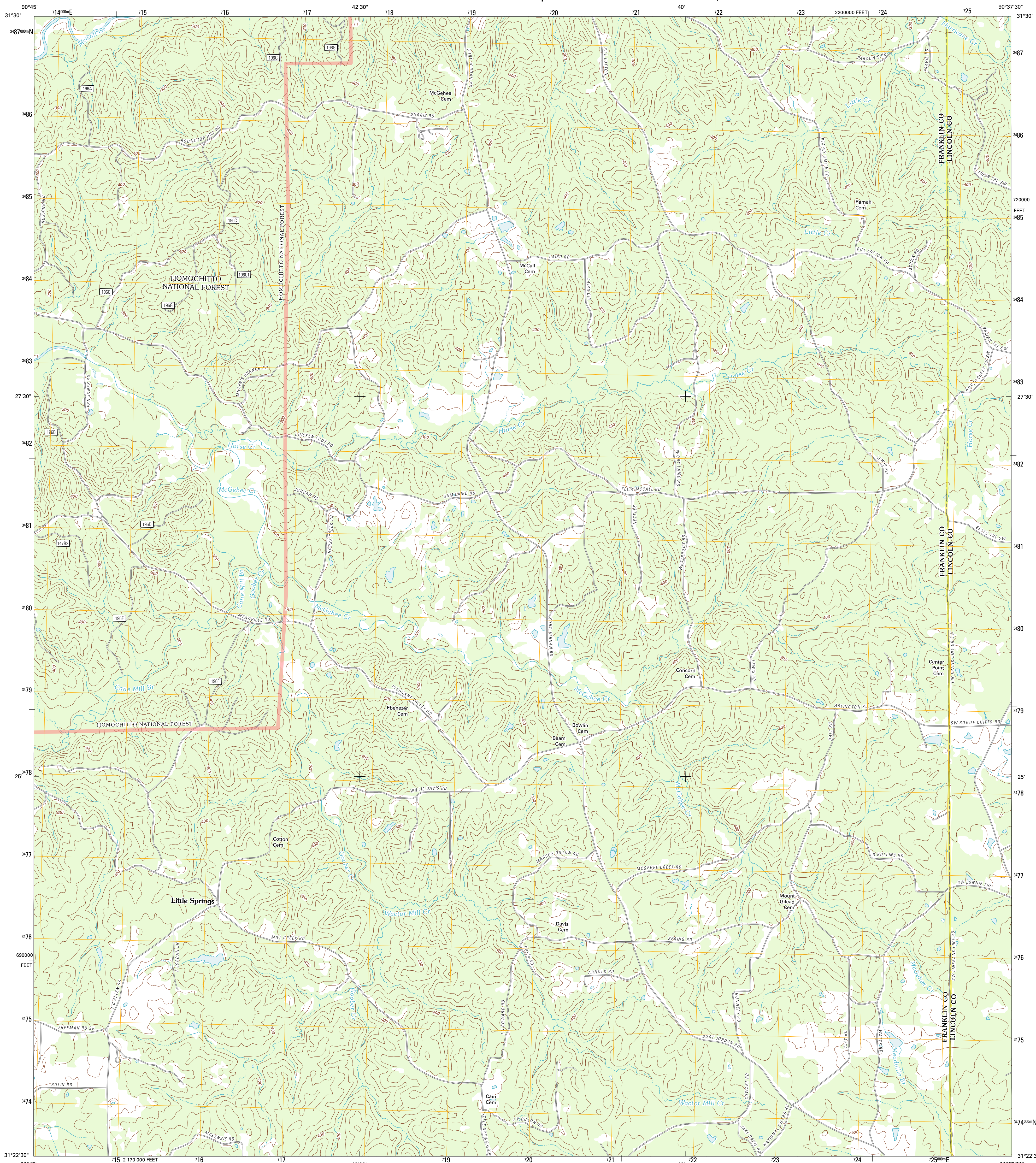




U.S. DEPARTMENT OF THE INTERIOR  
U. S. GEOLOGICAL SURVEY



LITTLE SPRINGS QUADRANGLE  
MISSISSIPPI  
7.5-MINUTE SERIES

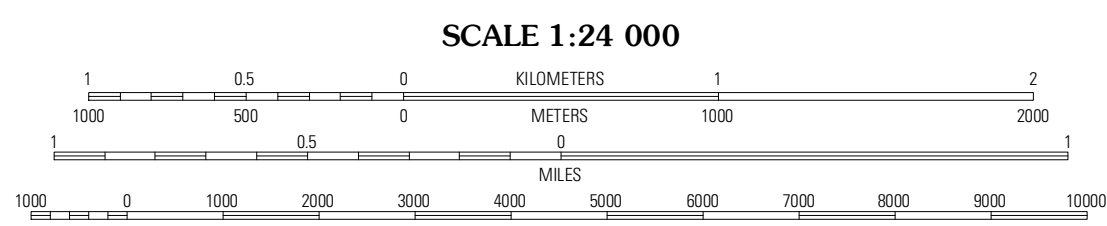


Produced by the United States Geological Survey  
North American Datum of 1983 (NAD83)  
World Geodetic System of 1984 (WGS84). Projection and  
1 000-meter grid: Universal Transverse Mercator, Zone 15R  
10 000-foot ticks: Mississippi Coordinate System of 1983  
(west zone)

UTM GRID AND 2012 MAGNETIC NORTH  
DECLINATION AT CENTER OF SHEET

11° 12' 21" N  
0° 3' 0" N

U.S. National Grid  
100,000m Square ID  
YD  
Grid Zone Designation  
15R



CONTOUR INTERVAL 20 FEET  
NORTH AMERICAN VERTICAL DATUM OF 1988

This map was produced to conform with the  
National Geospatial Program US Topo Product Standard, 2011.  
A metadata file associated with this product is draft version 0.6.2



QUADRANGLE LOCATION

Eddickton	McCall Creek	Zelus
Bude	Little Springs	West Lincoln
Busy Corner	Smithdale	Auburn

**ROAD CLASSIFICATION**

Interstate Route State Route

US Route Local Road

Ramp 4WD

Interstate Route US Route State Route

FS Primary Route FS Passenger Route FS High Clearance Route

Check with local Forest Service unit for current travel conditions and restrictions.

LITTLE SPRINGS, MS  
2012

ADJOINING 7.5 QUADRANGLES