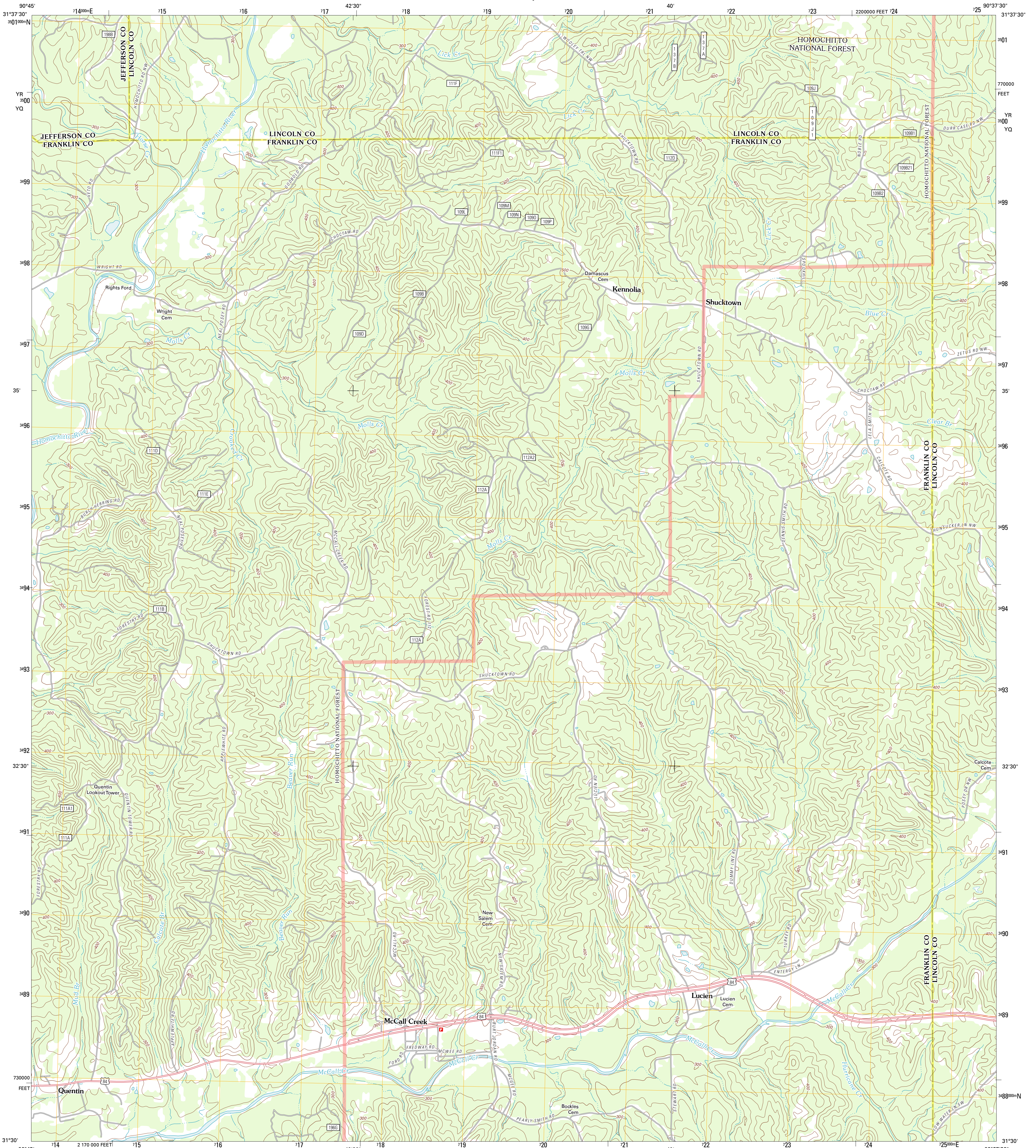




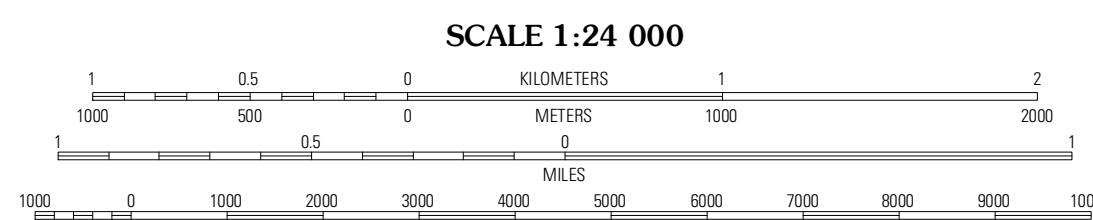
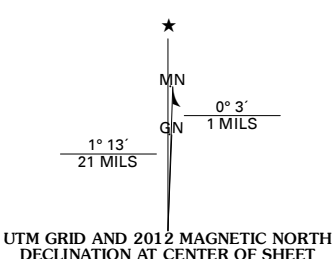
U.S. DEPARTMENT OF THE INTERIOR
U. S. GEOLOGICAL SURVEY



MCCALL CREEK QUADRANGLE
MISSISSIPPI
7.5-MINUTE SERIES



Produced by the United States Geological Survey
North American Datum of 1983 (NAD83)
World Geodetic System of 1984 (WGS84). Projection and
1 000-meter grid: Universal Transverse Mercator, Zone 15R
10 000-foot ticks: Mississippi Coordinate System of 1983
(west zone)



QUADRANGLE LOCATION

Union Church	Cassville	Midway
Eddickton	McCall Creek	Zelus
Bude	Little Springs	West Lincoln

ROAD CLASSIFICATION

- Interstate Route
- US Route
- Ramp
- State Route
- Local Road
- 4WD
- FS Primary Route
- FS Passenger Route
- FS High Clearance Route

Check with local Forest Service unit for current travel conditions and restrictions.

Imagery: N.A.I.P., August 2010
Roads: 2006-2011 TomTom
Roads within US Forest Service Lands: FSTopo Data with limited Forest Service updates, 2009
Names: GNIS, 2011
Hydrography: National Hydrography Dataset, 2010
Contours: National Elevation Dataset, 2008
Boundaries: Census, IBWC, IBC, USGS, 1972 - 2010

U.S. National Grid

100,000m Square ID

YR YQ

Grid Zone Designation 15R

CONTOUR INTERVAL 20 FEET
NORTH AMERICAN VERTICAL DATUM OF 1988

This map was produced to conform with the National Geospatial Program US Topo Product Standard, 2011. A metadata file associated with this product is draft version 0.6.2

MCCALL CREEK, MS
2012

ADJOINING 7.5 QUADRANGLES