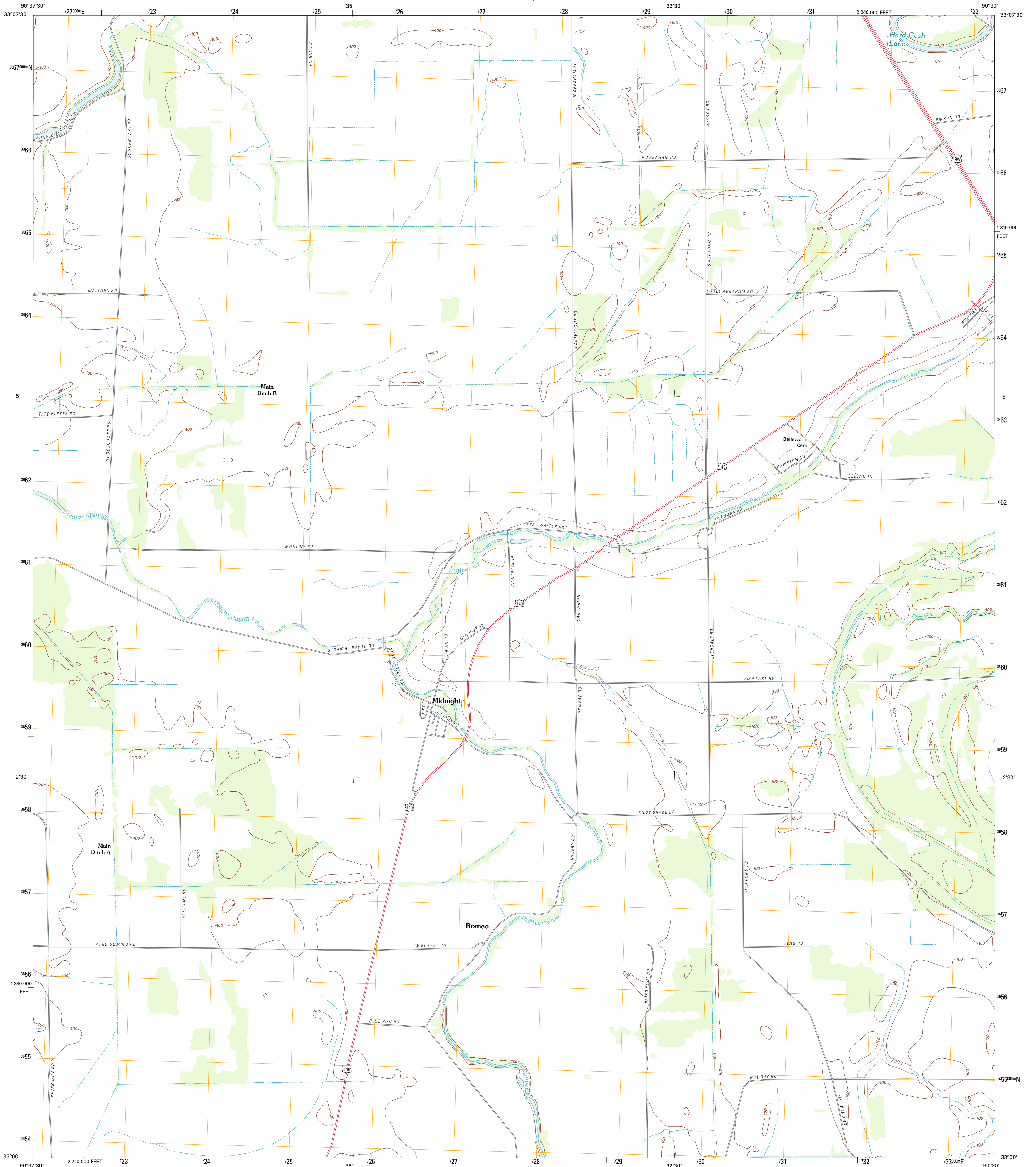




U.S. DEPARTMENT OF THE INTERIOR
U. S. GEOLOGICAL SURVEY



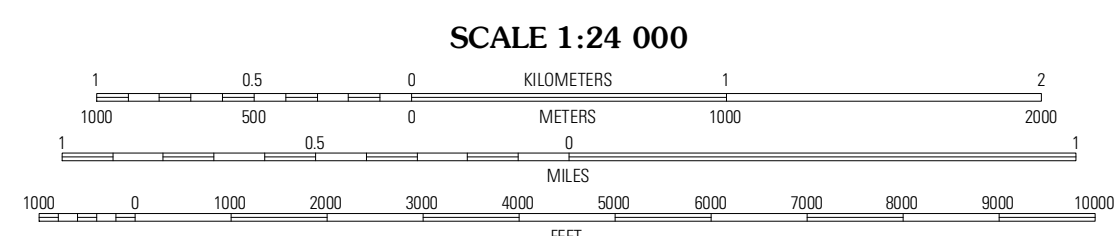
MIDNIGHT QUADRANGLE
MISSISSIPPI-HUMPHREYS CO.
7.5-MINUTE SERIES



Produced by the United States Geological Survey
North American Datum of 1983 (NAD83)
World Geodetic System of 1984 (WGS84). Projection and
1 000-meter grid: Universal Transverse Mercator, Zone 15S
10 000-foot ticks: Mississippi Coordinate System of 1983
(west zone)

UTM GRID AND 2012 MAGNETIC NORTH
DECLINATION AT CENTER OF SHEET

U.S. National Grid	100,000m Square ID
YES	
Grid Zone Designation	15S



CONTOUR INTERVAL 10 FEET
NORTH AMERICAN VERTICAL DATUM OF 1988

This map was produced to conform with the
National Geospatial Program US Topo Product Standard, 2011.
A metadata file associated with this product is draft version 0.6.2



Midnight NW	Bellewood	Belzoni
Richey	Midnight	Silver City
Bayland	Louise	Carter

ROAD CLASSIFICATION

- Interstate Route
- US Route
- State Route
- Local Road
- 4WD
- State Route

MIDNIGHT, MS
2012

ADJOINING 7.5 QUADRANGLES