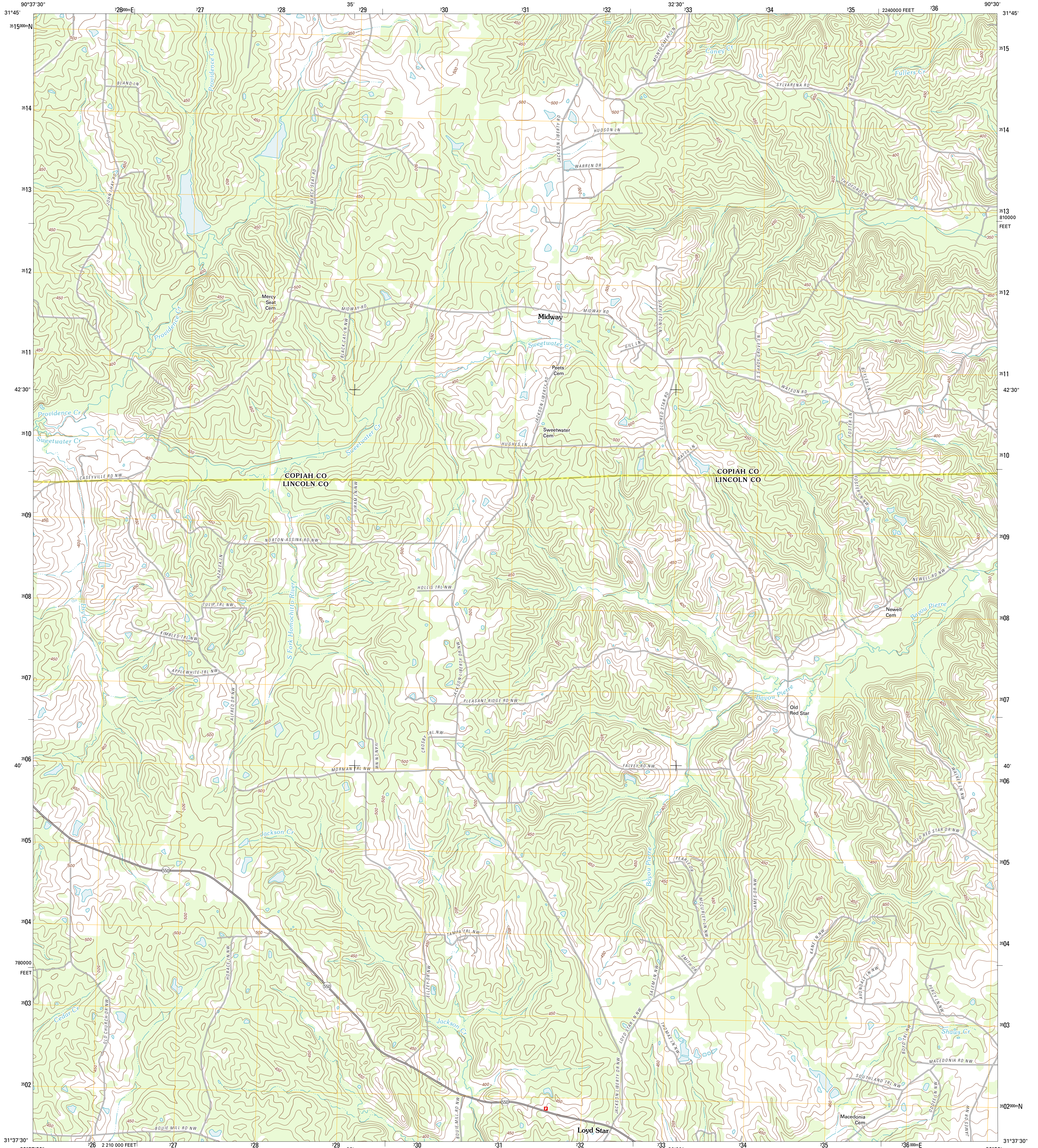




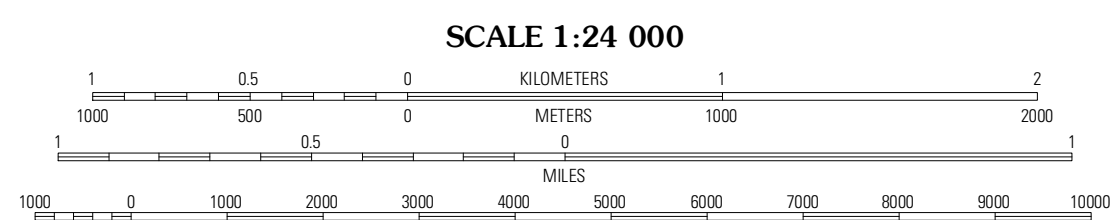
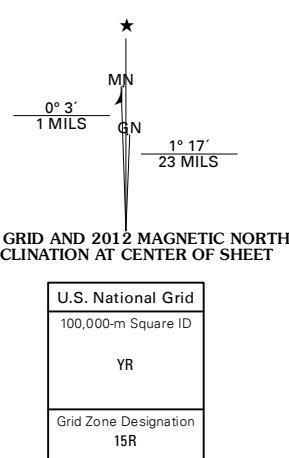
U.S. DEPARTMENT OF THE INTERIOR  
U. S. GEOLOGICAL SURVEY



MIDWAY QUADRANGLE  
MISSISSIPPI  
7.5-MINUTE SERIES



Produced by the United States Geological Survey  
North American Datum of 1983 (NAD83)  
World Geodetic System of 1984 (WGS84). Projection and  
10 000-foot ticks: Mississippi Coordinate System of 1983  
(west zone)



CONTOUR INTERVAL 10 FEET  
NORTH AMERICAN VERTICAL DATUM OF 1988  
This map was produced to conform with the  
National Geospatial Program US Topo Product Standard, 2011.  
A metadata file associated with this product is draft version 0.6.2

ROAD CLASSIFICATION

- Interstate Route
- US Route
- Ramp
- State Route
- Local Road
- 4WD
- US Route
- State Route

QUADRANGLE LOCATION

Barlow	Smyrna	Hazlehurst
Caseyville	Midway	Wesson
McCall Creek	Zelus	Brookhaven

MIDWAY, MS  
2012

ADJOINING 7.5' QUADRANGLES

Imagery: NAIP, August 2010  
Roads: 2006-2011 TomTom  
Names: GNS, 2011  
Hydrography: National Hydrography Dataset, 2010  
Contours: National Elevation Dataset, 2008  
Boundaries: Census, IBWC, IBC, USGS, 1972 - 2010