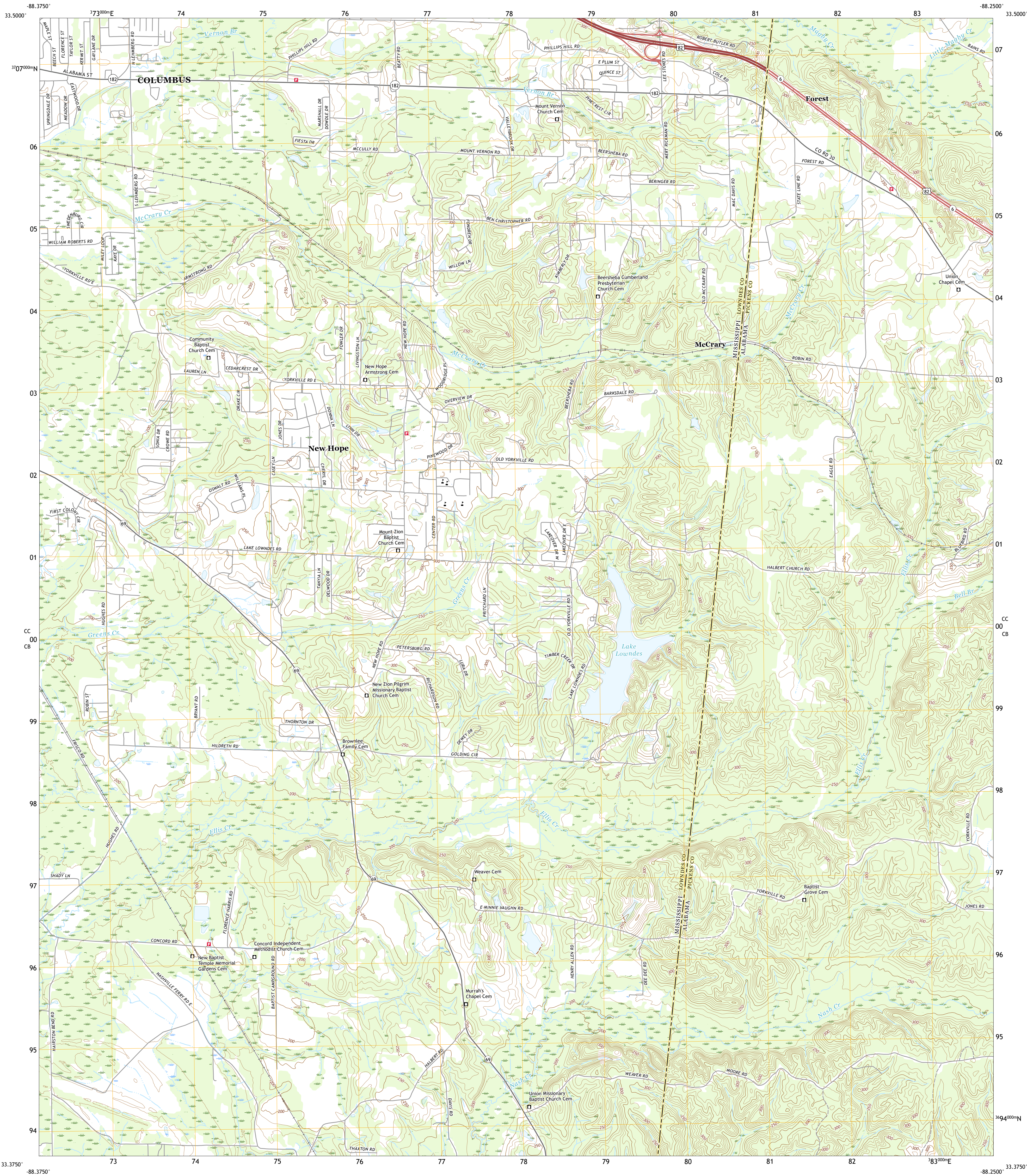




U.S. DEPARTMENT OF THE INTERIOR
U.S. GEOLOGICAL SURVEY

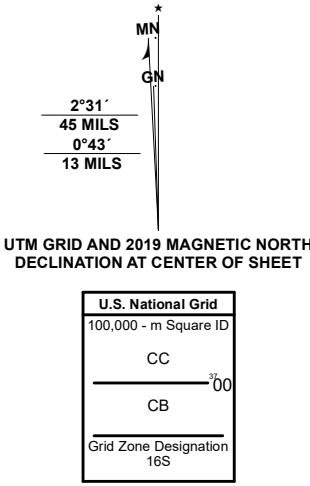


NEW HOPE QUADRANGLE
MISSISSIPPI - ALABAMA
7.5-MINUTE SERIES



Produced by the United States Geological Survey

North American Datum of 1983 (NAD83)
World Geodetic System of 1984 (WGS84) Projection and
1 000-meter grid/Universal Transverse Mercator, Zone 16S
This map is not a legal document. Boundaries may be
generalized for this map scale. Private lands within government
reservations may not be shown. Obtain permission before
entering private lands.
Imagery.....NAIP, October 2019 - December 2020
Roads.....U.S. Census Bureau - 2017
Names.....GNIS, 1980 - 2020
Hydrography.....National Hydrography Dataset, 1999 - 2019
Contours.....National Elevation Dataset, 2008 - 2019
Boundaries.....Multiple sources; see metadata file 2018 - 2019
Public Land Survey System.....BLM, 2017 - 2020
Wetlands.....FWS National Wetlands Inventory 1980 - 2004

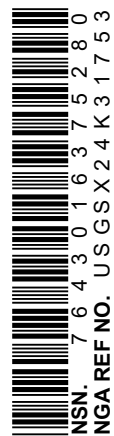


1	2	3
4	5	6
7	8	9

1 Columbus North
2 Steens
3 Fernbank
4 Columbus South
5 Ethelville
6 Trinity
7 Forreston
8 Reform SW

ROAD CLASSIFICATION	
Expressway	Local Connector
Secondary Hwy	Local Road
Ramp	4WD
Interstate Route	US Route
	State Route

NEW HOPE, MS, AL
2020



NSN 1643016375280
NGA REF NO. USGSX24K31753