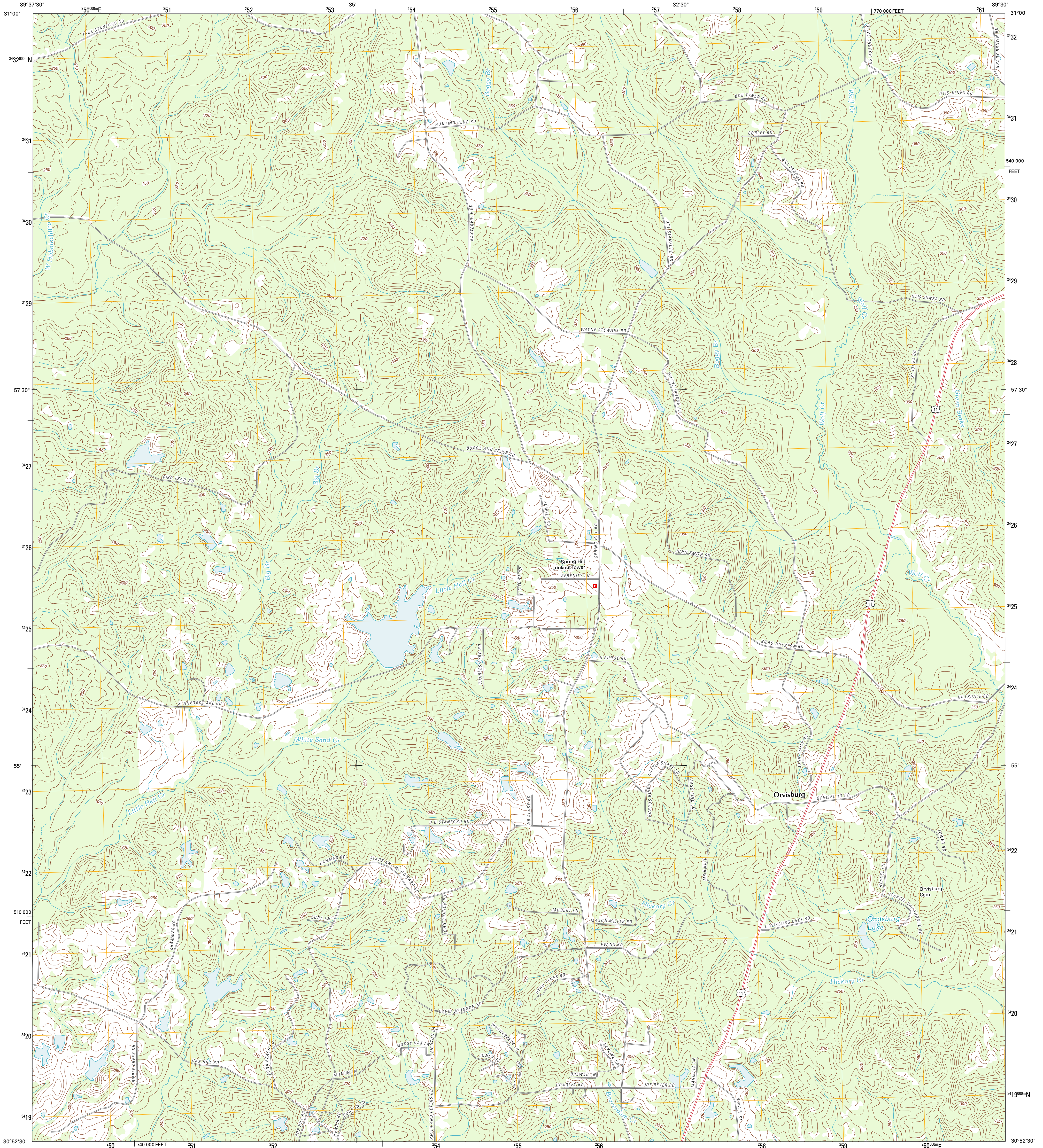




U.S. DEPARTMENT OF THE INTERIOR
U. S. GEOLOGICAL SURVEY



ORVISBURG QUADRANGLE
MISSISSIPPI-PEARL RIVER CO.
7.5-MINUTE SERIES

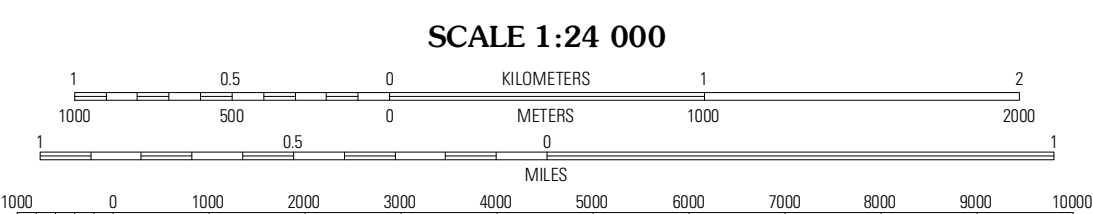


Produced by the United States Geological Survey
North American Datum of 1983 (NAD83)
World Geodetic System of 1984 (WGS84) Projection and
1 000-meter grid: Universal Transverse Mercator, Zone 16R
10 000-foot ticks: Mississippi Coordinate System of 1983
(east zone)

Imagery.....NAIP, June 2010 - August 2010
Roads.....©2006-2011 TomTom
Names.....GNIS, 2011
Hydrography.....National Hydrography Dataset, 2010
Contours.....National Elevation Dataset, 2011
Boundaries.....Census, IBWC, IBC, USGS, 1972 - 2010

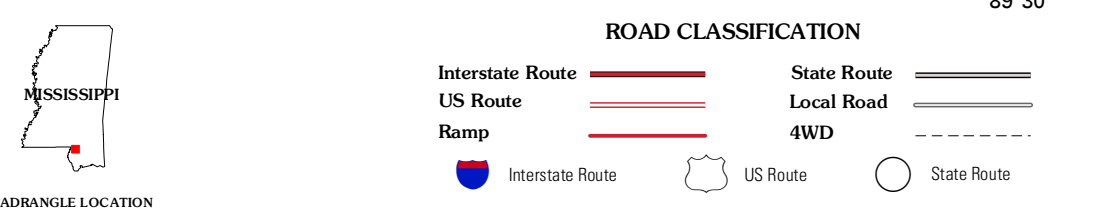
UTM GRID AND 2012 MAGNETIC NORTH
DECLINATION AT CENTER OF SHEET

U.S. National Grid
100,000-m Square ID
BV
Grid Zone Designation
16R



SCALE 1:24 000
CONTOUR INTERVAL 10 FEET
NORTH AMERICAN VERTICAL DATUM OF 1988

This map was produced to conform with the
National Geospatial Program US Topo Product Standard, 2011.
A metadata file associated with this product is draft version 0.6.2



QUADRANGLE LOCATION

Baxterville SW	Baxterville	Lumberton
Fords Creek	Orvisburg	Hillsdale
White Sand	Poplarville	Big Swamp

ADJOINING 7.5' QUADRANGLES

ORVISBURG, MS
2012