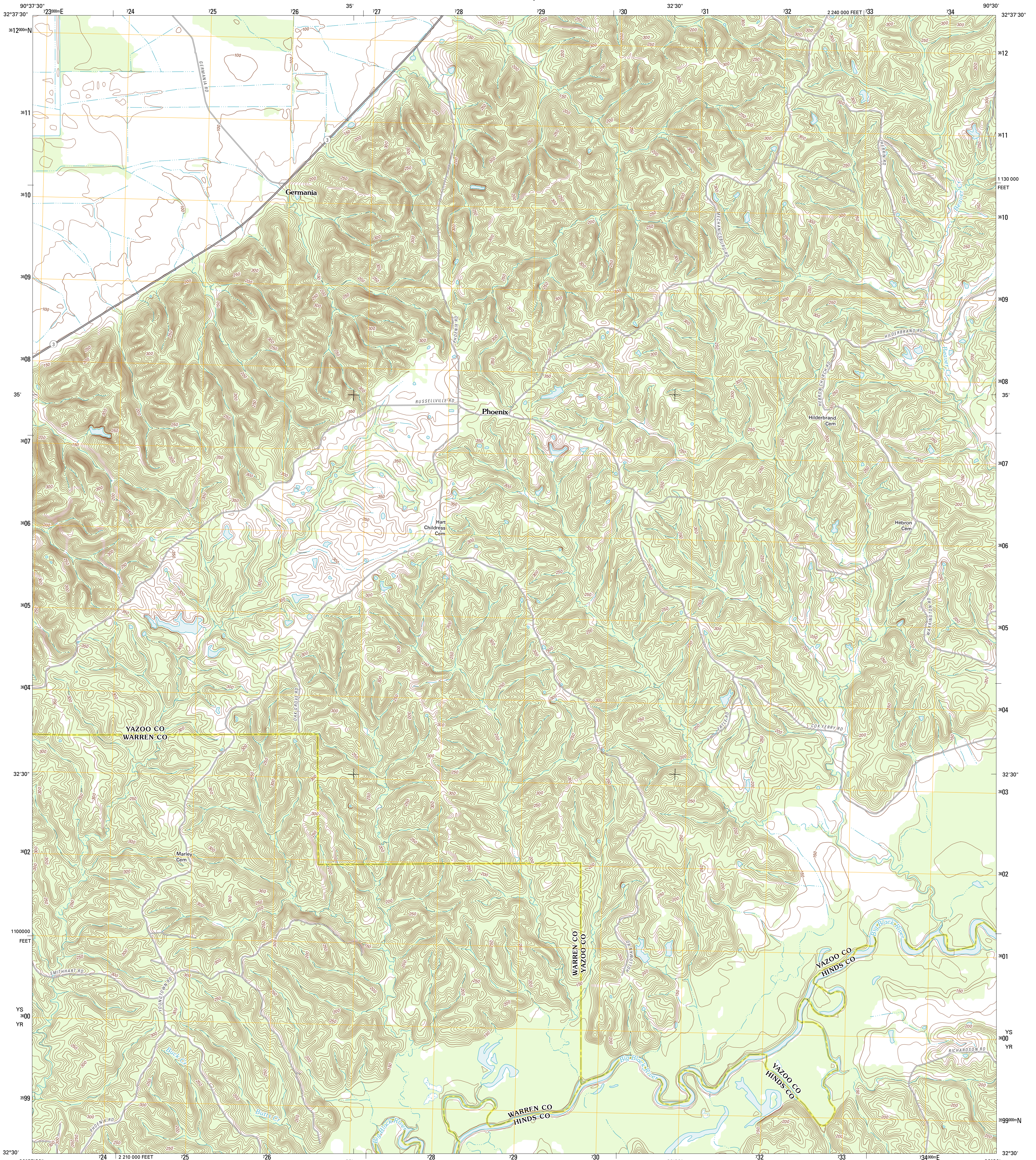




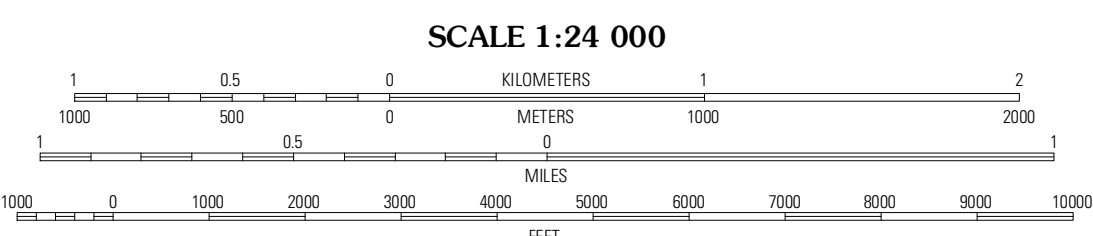
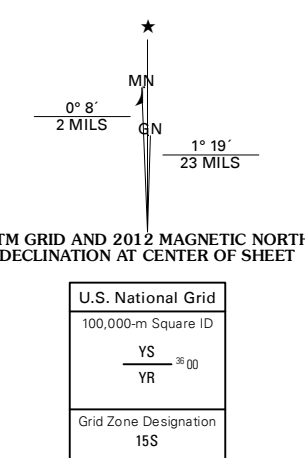
U.S. DEPARTMENT OF THE INTERIOR
U. S. GEOLOGICAL SURVEY



PHOENIX QUADRANGLE
MISSISSIPPI
7.5-MINUTE SERIES



Produced by the United States Geological Survey
North American Datum of 1983 (NAD83)
World Geodetic System of 1984 (WGS84). Projection and
1 000-foot ticks: Mississippi Coordinate System of 1983
(west zone)

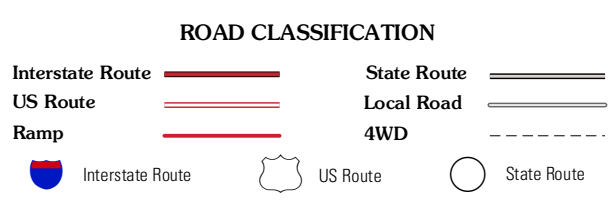


CONTOUR INTERVAL 10 FEET
NORTH AMERICAN VERTICAL DATUM OF 1988
This map was produced to conform with the
National Geospatial Program US Topo Product Standard, 2011.
A metadata file associated with this product is draft version 0.6.2



QUADRANGLE LOCATION

Lucie	Satartia	Tinsley
Eldorado	Phoenix	Coxs Ferry
Oak Ridge	Queens Hill Lake	Brownsville



PHOENIX, MS
2012

ADJOINING 7.5 QUADRANGLES