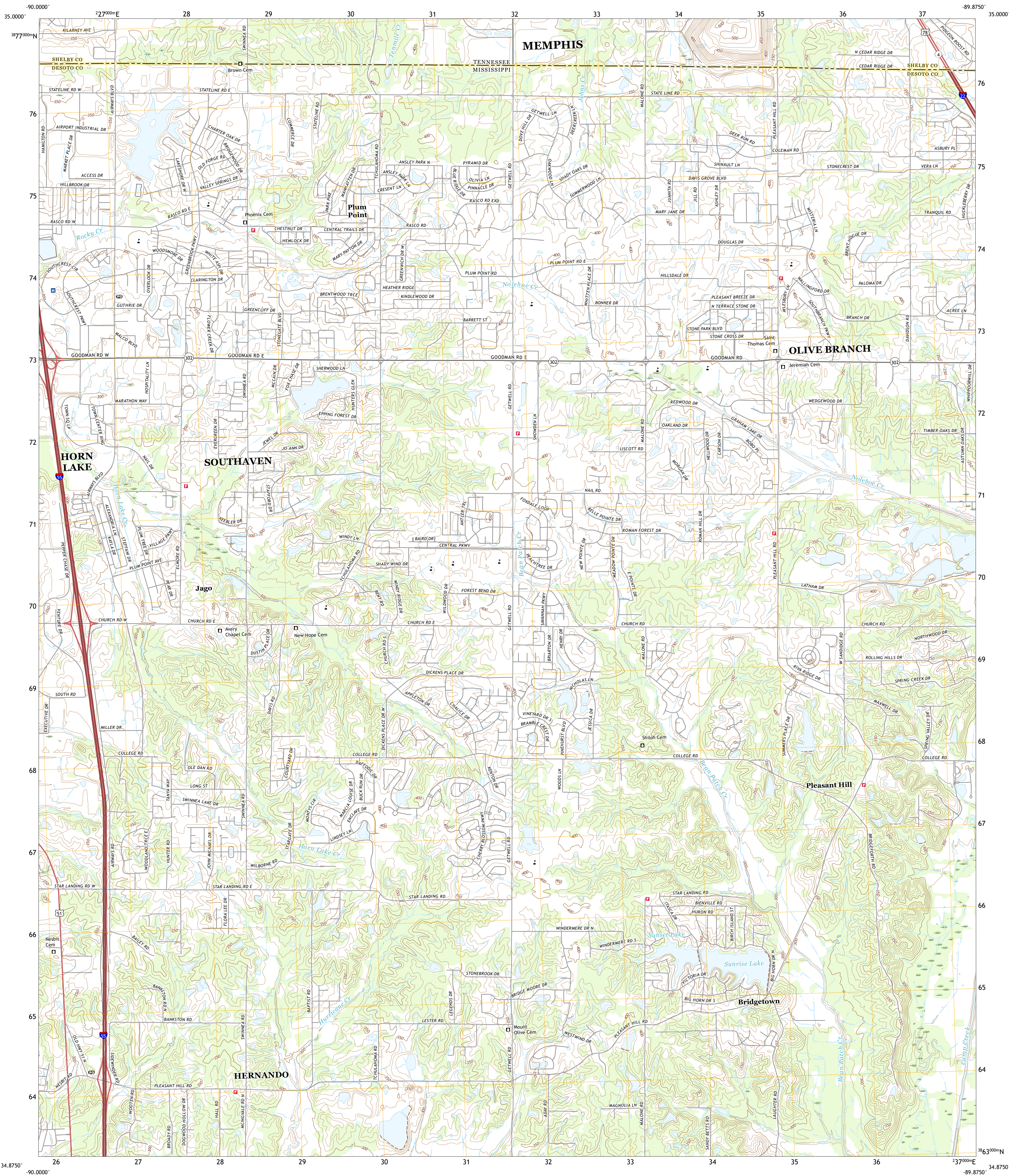




U.S. DEPARTMENT OF THE INTERIOR  
U.S. GEOLOGICAL SURVEY



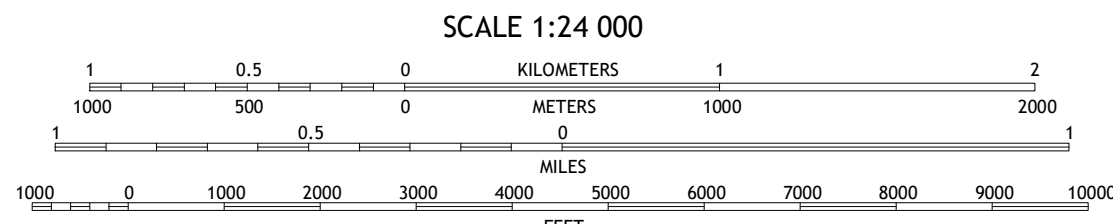
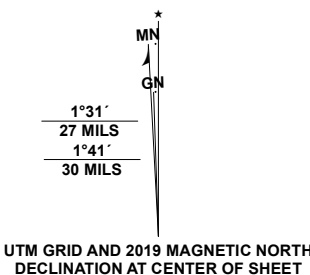
PLEASANT HILL QUADRANGLE  
MISSISSIPPI - TENNESSEE  
7.5-MINUTE SERIES



Produced by the United States Geological Survey

North American Datum of 1983 (NAD83)  
World Geodetic System of 1984 (WGS84) Projection and  
1 000-meter grid/Universal Transverse Mercator, Zone 15S16S  
This map is not a legal document. Boundaries may be  
generalized for this map scale. Private lands within government  
reservations may not be shown. Obtain permission before  
entering private lands.

Imagery.....NAIP, June 2016 - October 2016  
Roads.....U.S. Census Bureau, 2016  
Names.....GNV, 1980-2020  
Hydrography.....National Hydrography Dataset, 1989 - 2018  
Contours.....National Elevation Dataset, 2012 - 2019  
Boundaries.....Multiple sources: see metadata file 2018-2019  
Public Land Survey System.....BLM, 2017  
Wetlands.....FWS National Wetlands Inventory 1981



CONTOUR INTERVAL 10 FEET  
NORTH AMERICAN VERTICAL DATUM OF 1988

This map was produced to conform with the  
National Geospatial Program US Topo Product Standard, 2011.  
A metadata file associated with this product is draft version 0.6.18



1	2	3
4	5	6
7	8	

1 Southwest Memphis  
2 Southeast Memphis  
3 Germantown  
4 Horn Lake  
5 Olive Branch  
6 Frees Corners  
7 Hernando  
8 Lewisburg

ROAD CLASSIFICATION

Expressway	Local Connector
Secondary Hwy	Local Road
Ramp	4WD
Interstate Route	US Route
	State Route

PLEASANT HILL, MS, TN

2021



NSN 1643016375346  
USGS X 2.4 K 3 5 6 3 0  
NSA REF NO.