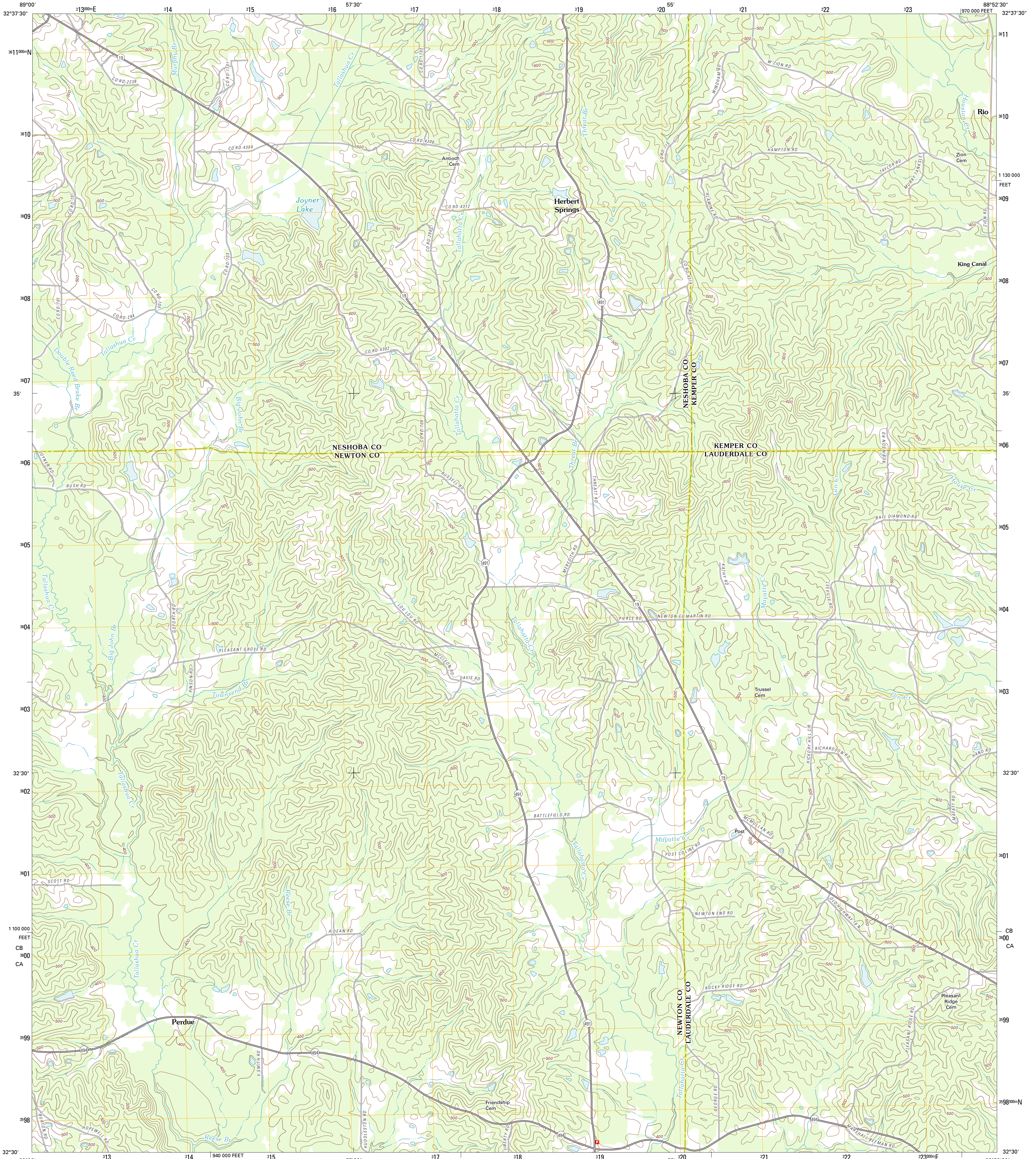




U.S. DEPARTMENT OF THE INTERIOR
U. S. GEOLOGICAL SURVEY



POST QUADRANGLE
MISSISSIPPI
7.5-MINUTE SERIES

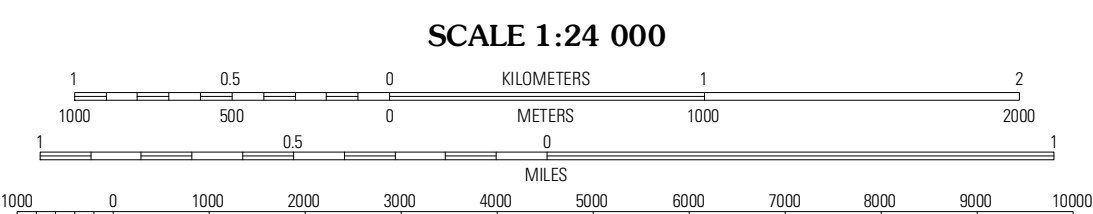


Produced by the United States Geological Survey
North American Datum of 1983 (NAD83)
World Geodetic System of 1984 (WGS84). Projection and
1 000-meter grid: Universal Transverse Mercator, Zone 16S
10 000-foot ticks: Mississippi Coordinate System of 1983
(east zone)

Imagery.....NAP, July 2010 - August 2010
Roads.....©2006-2011 TomTom
Names.....GNIS, 2011
Hydrography.....National Hydrography Dataset, 2010
Contours.....National Elevation Dataset, 2008
Boundaries.....Census, IBWC, IBC, USGS, 1972 - 2010

UTM GRID AND 2012 MAGNETIC NORTH
DECLINATION AT CENTER OF SHEET

U.S. National Grid	100,000-m Square ID
CB	98
CA	00
Grid Zone Designation	16S



CONTOUR INTERVAL 20 FEET
NORTH AMERICAN VERTICAL DATUM OF 1988

This map was produced to conform with the
National Geospatial Program US Topo Product Standard, 2011.
A metadata file associated with this product is draft version 0.6.2



QUADRANGLE LOCATION

Deemer	House	Moscow
Union East	Post	Center Hill
Decatur	Duffee	Collinsville

ROAD CLASSIFICATION

Interstate Route	State Route
US Route	Local Road
Ramp	4WD

POST, MS
2012

ADJOINING 7.5' QUADRANGLES