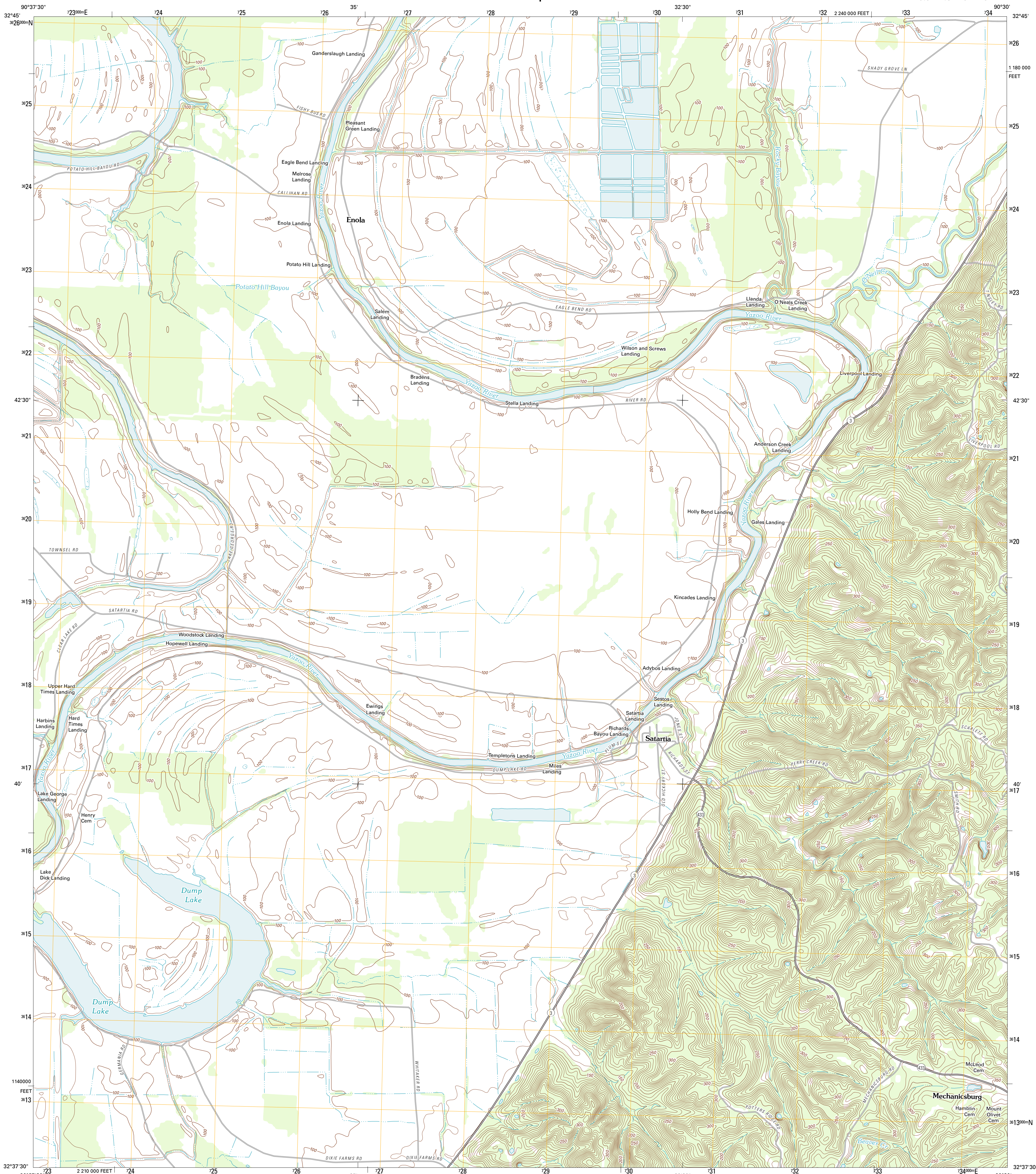




U.S. DEPARTMENT OF THE INTERIOR  
U. S. GEOLOGICAL SURVEY



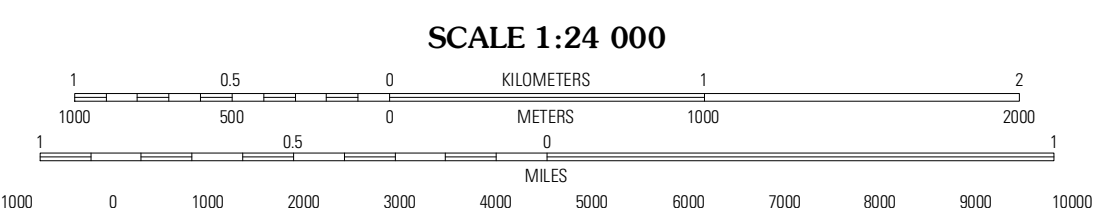
SATARTIA QUADRANGLE  
MISSISSIPPI-YAZOO CO.  
7.5-MINUTE SERIES



Produced by the United States Geological Survey  
North American Datum of 1983 (NAD83)  
World Geodetic System of 1984 (WGS84). Projection and  
1 000-meter grid: Universal Transverse Mercator, Zone 15S  
10 000-foot ticks: Mississippi Coordinate System of 1983  
(west zone)

UTM GRID AND 2012 MAGNETIC NORTH  
DECLINATION AT CENTER OF SHEET

U.S. National Grid	100 000-m Square ID
YES	
Grid Zone Designation	15S



CONTOUR INTERVAL 10 FEET  
NORTH AMERICAN VERTICAL DATUM OF 1988

This map was produced to conform with the  
National Geospatial Program US Topo Product Standard, 2011.  
A metadata file associated with this product is draft version 0.6.2



QUADRANGLE LOCATION

Holly Bluff	Bayland SE	Yazoo City
Lucie	Satartia	Tinley
Eldorado	Phoenix	Coxs Ferry

ROAD CLASSIFICATION

- Interstate Route
- US Route
- Ramp
- State Route
- Local Road
- 4WD

SATARTIA, MS  
2012

ADJOINING 7.5 QUADRANGLES