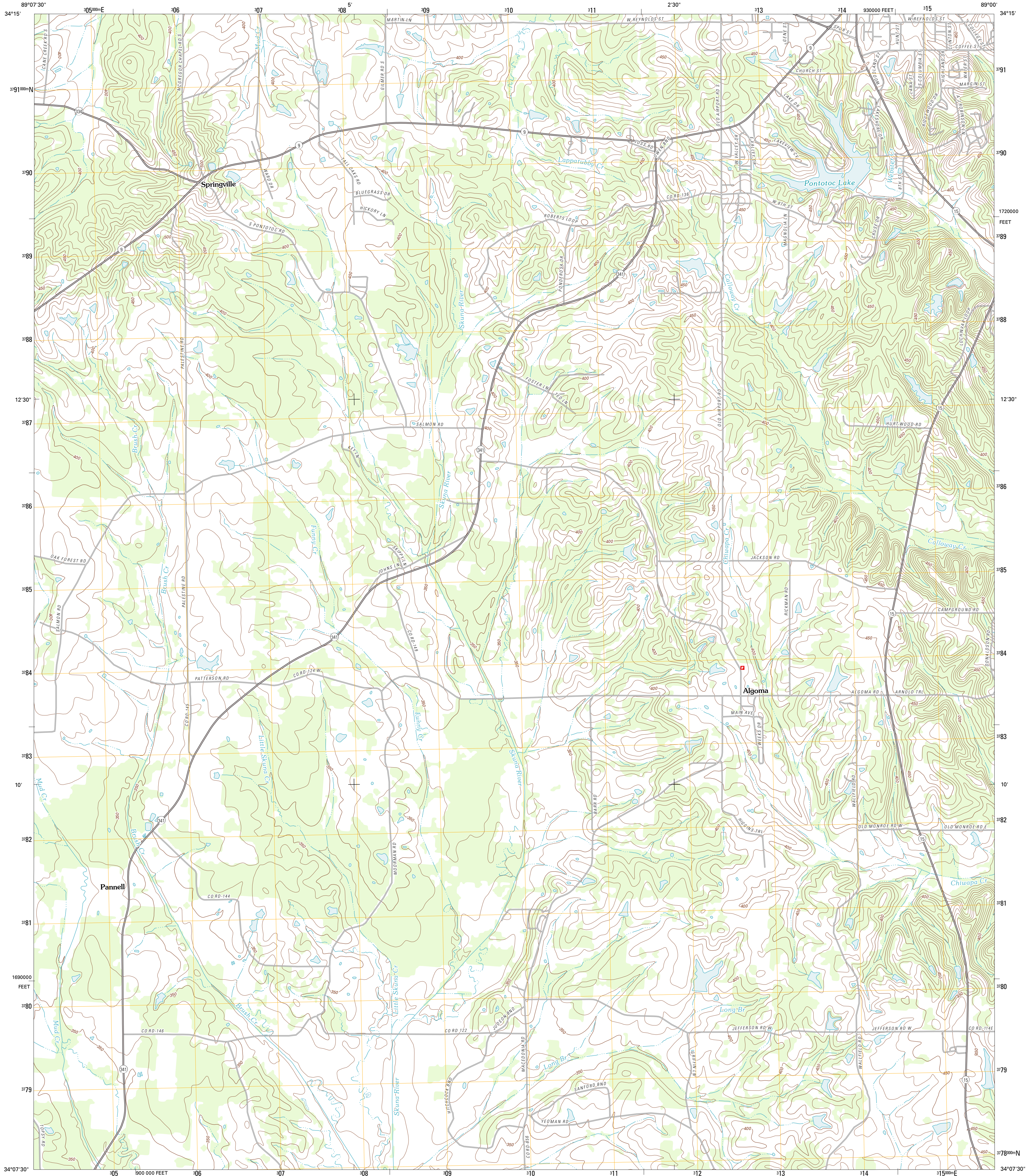




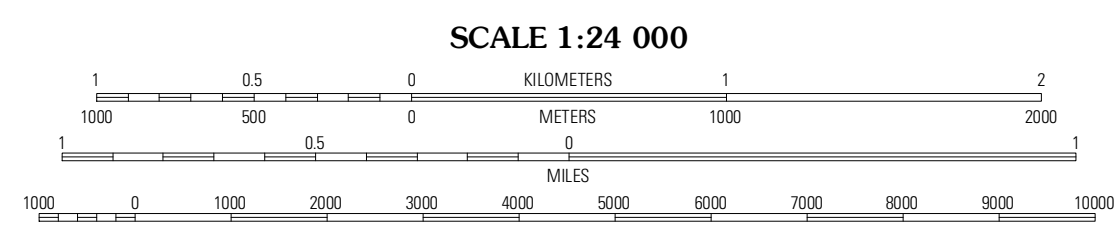
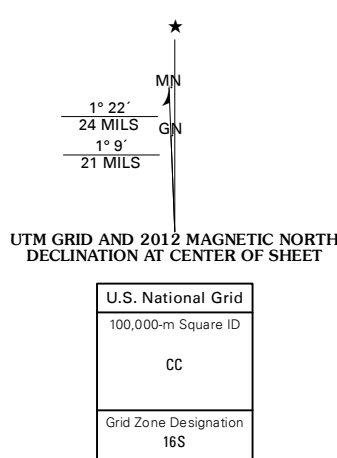
U.S. DEPARTMENT OF THE INTERIOR
U. S. GEOLOGICAL SURVEY



SOUTHWEST PONTOTOC QUADRANGLE
MISSISSIPPI-PONTOTOC CO.
7.5-MINUTE SERIES



Produced by the United States Geological Survey
North American Datum of 1983 (NAD83)
World Geodetic System of 1984 (WGS84). Projection and
1 000-meter grid: Universal Transverse Mercator, Zone 16S
10 000-foot ticks: Mississippi Coordinate System of 1983
(east zone)



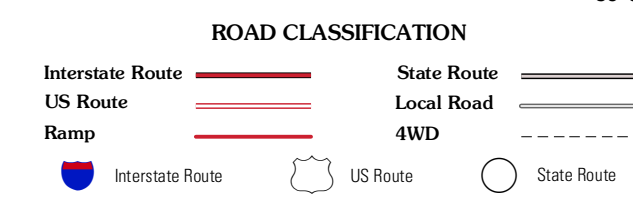
CONTOUR INTERVAL 10 FEET
NORTH AMERICAN VERTICAL DATUM OF 1988
This map was produced to conform with the
National Geospatial Program US Topo Product Standard, 2011.
A metadata file associated with this product is draft version 0.6.2



QUADRANGLE LOCATION

Thorton	Northwest Pontotoc	Northeast Pontotoc
Randolph	Southwest Pontotoc	Southeast Pontotoc
Robbs	Houliha	Troy

ADJOINING 7.5' QUADRANGLES



SOUTHWEST PONTOTOC, MS
2012