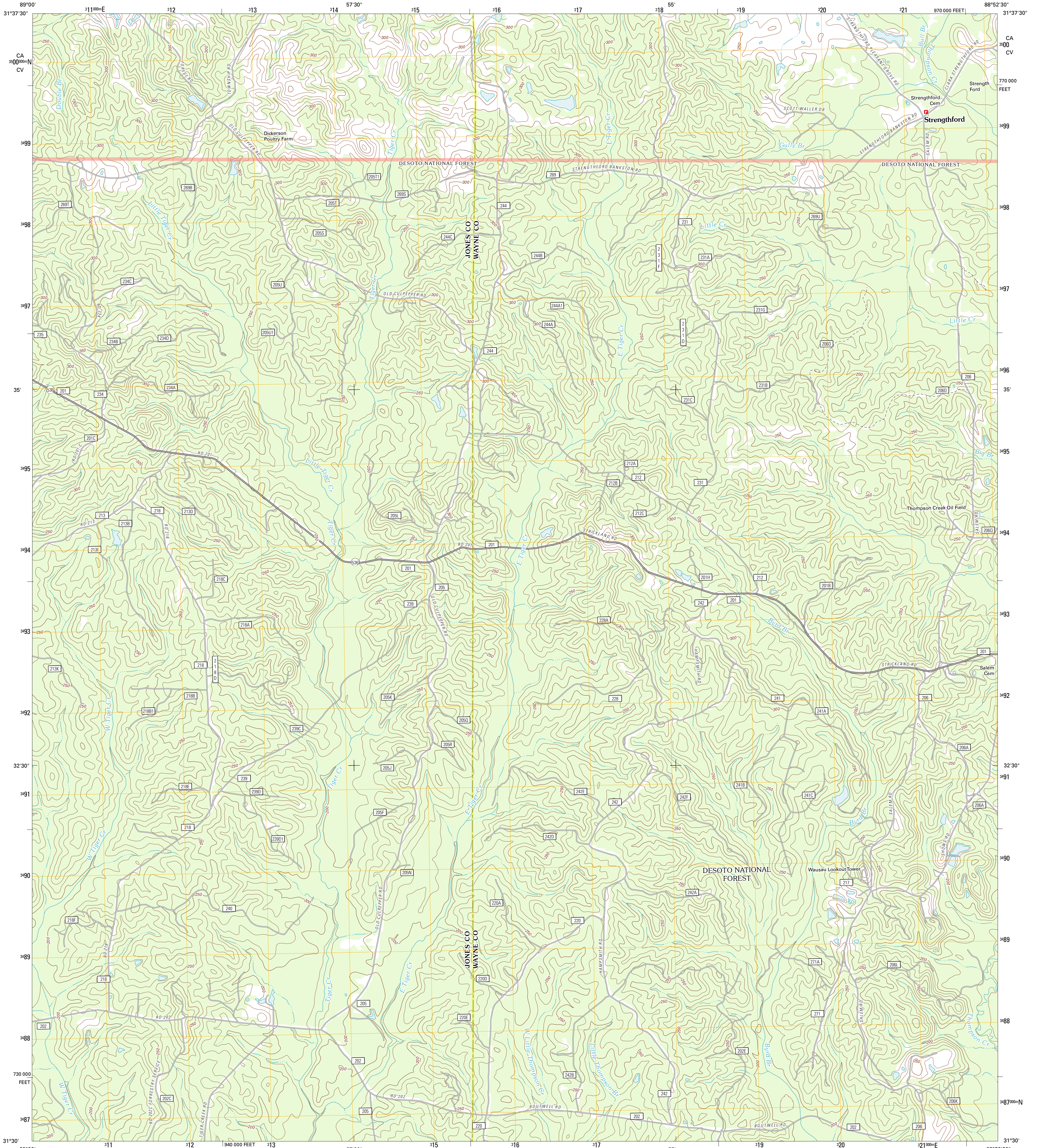




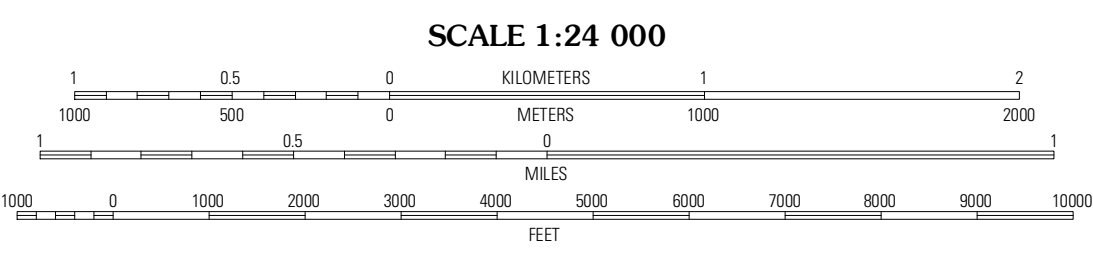
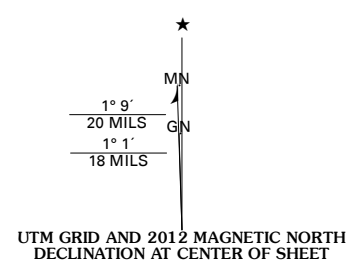
U.S. DEPARTMENT OF THE INTERIOR
U. S. GEOLOGICAL SURVEY



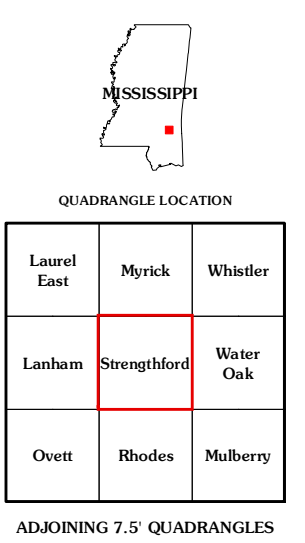
STRENGTHFORD QUADRANGLE
MISSISSIPPI
7.5-MINUTE SERIES



Produced by the United States Geological Survey
North American Datum of 1983 (NAD83)
World Geodetic System of 1984 (WGS84). Projection and
1 000-meter grid: Universal Transverse Mercator, Zone 16R
10 000-foot ticks: Mississippi Coordinate System of 1983
(east zone)



CONTOUR INTERVAL 10 FEET
NORTH AMERICAN VERTICAL DATUM OF 1988
This map was produced to conform with the
National Geospatial Program US Topo Product Standard, 2011.
A metadata file associated with this product is draft version 0.6.2



ROAD CLASSIFICATION

- Interstate Route (thick red line)
- US Route (red line)
- Ramp (red line with blue triangle)
- State Route (thin red line)
- Local Road (black line)
- 4WD (dashed black line)
- FS Primary Route (blue line)
- FS Passenger Route (black line with blue circle)
- FS High Clearance Route (black line with blue circle)

Check with local Forest Service unit for current travel conditions and restrictions.

Imagery: N/AIP, August 2010
Roads within US Forest Service Lands: FSTopo Data with limited Forest Service updates, 2009
Names: GNIS, 2011
Hydrography: National Hydrography Dataset, 2010
Contours: National Elevation Dataset, 2008
Boundaries: Census, IBWC, IBC, USGS, 1972 - 2010

U.S. National Grid

100,000-ft Square ID	CA	RD	CV
Grid Zone Designation	16R		

ADJOINING 7.5 QUADRANGLES

Laurel East	Myrick	Whider
Lanham	Strengthford	Water Oak
Overt	Rhodes	Mulberry

STRENGTHFORD, MS
2012