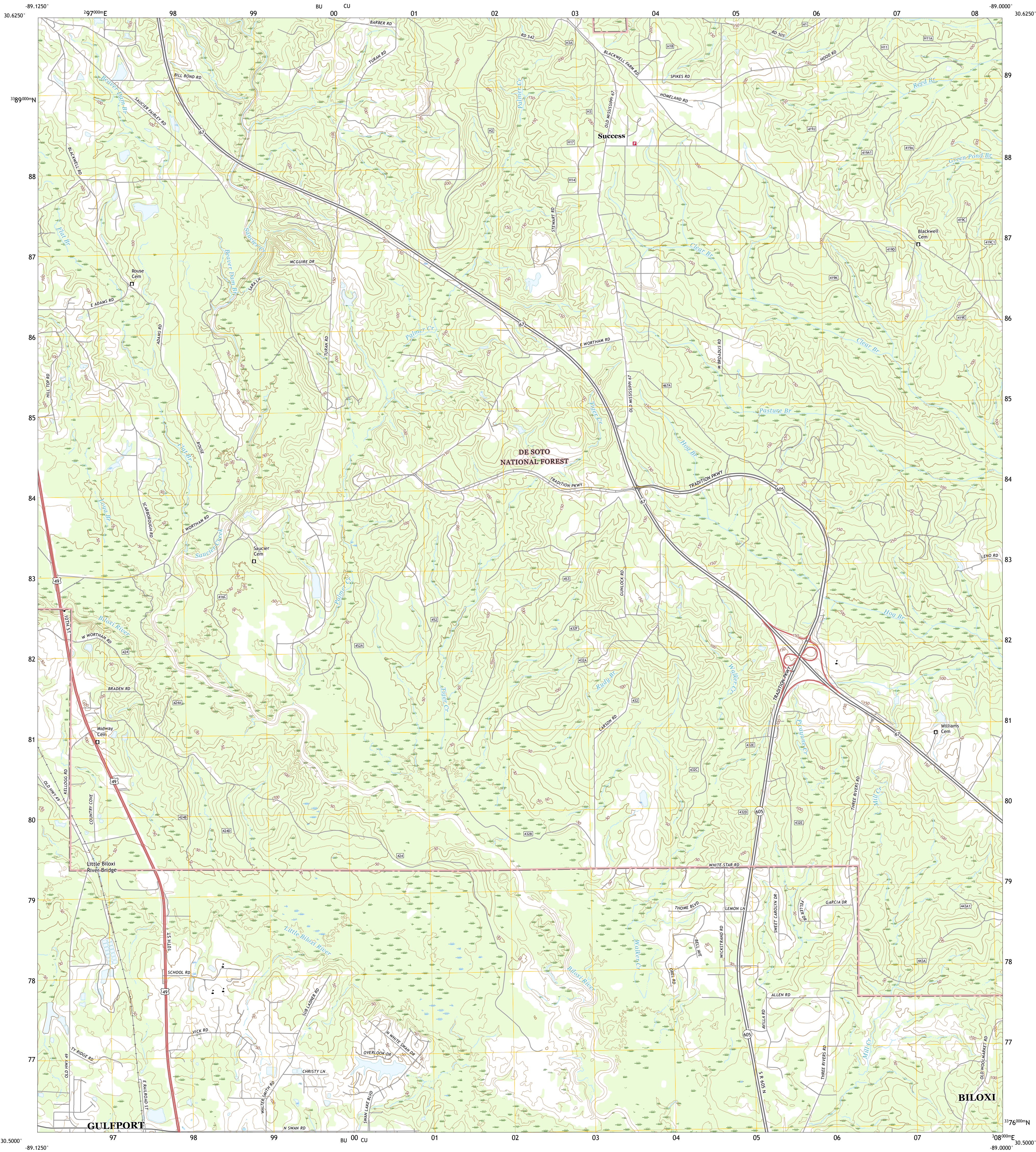




U.S. DEPARTMENT OF THE INTERIOR  
U.S. GEOLOGICAL SURVEY

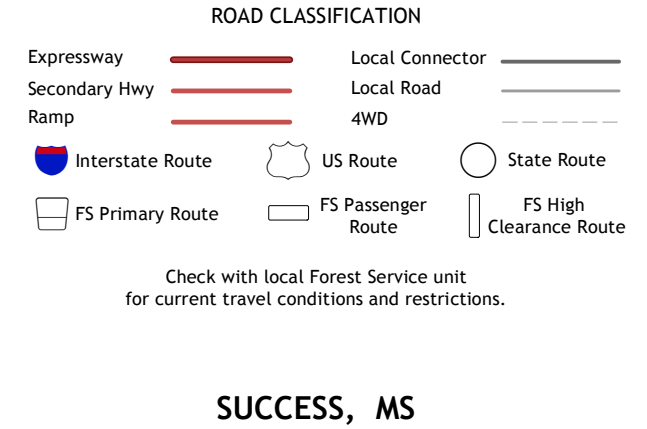
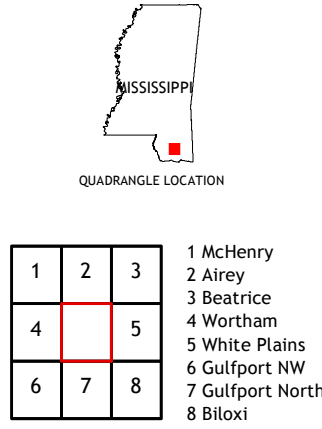
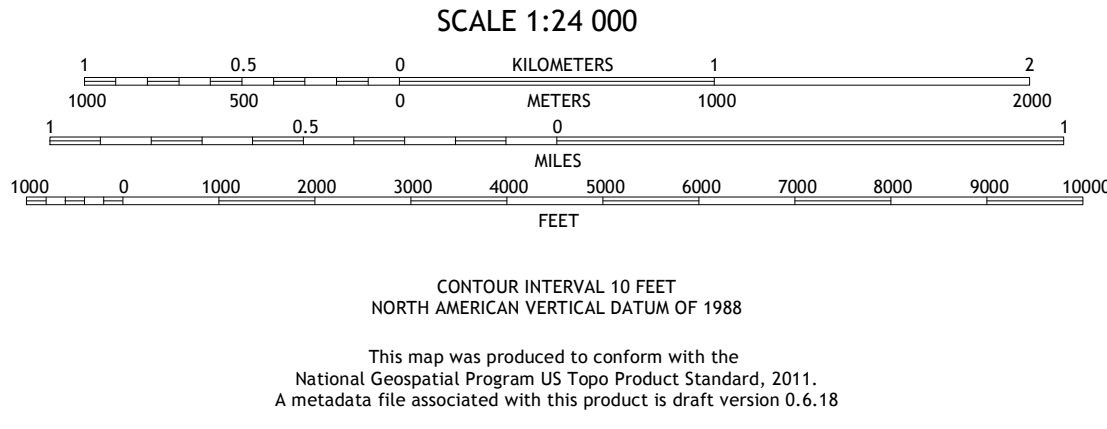
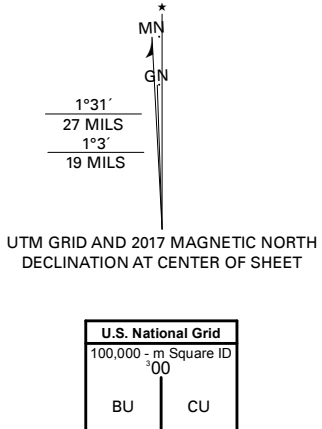


SUCCESS QUADRANGLE  
MISSISSIPPI - HARRISON COUNTY  
7.5-MINUTE SERIES



Produced by the United States Geological Survey  
North American Datum of 1983 (NAD83)  
World Geodetic System of 1984 (WGS84). Projection and  
1 000-meter grid/Universal Transverse Mercator, Zone 16R  
This map is not a legal document. Boundaries may be  
generalized for this map scale. Private lands within government  
reservations may not be shown. Obtain permission before  
entering private lands.

Imagery.....N.A.P., August 2016 - October 2016  
Roads.....U.S. Census Bureau, 2017  
Roads within US Forest Service Lands.....FSTopo  
Data with Limited Forest Service updates, 2015  
Names.....GHS, 1980 - 2016  
Hydrography.....National Hydrography Dataset, 2017  
Contours.....National Elevation Dataset, 2018  
Boundaries.....Multiple sources; see metadata file  
Public Land Survey System.....BLM, 2017  
Wetlands.....FWS National Wetlands Inventory 2005 - 2007



SUCCESS, MS  
2018

