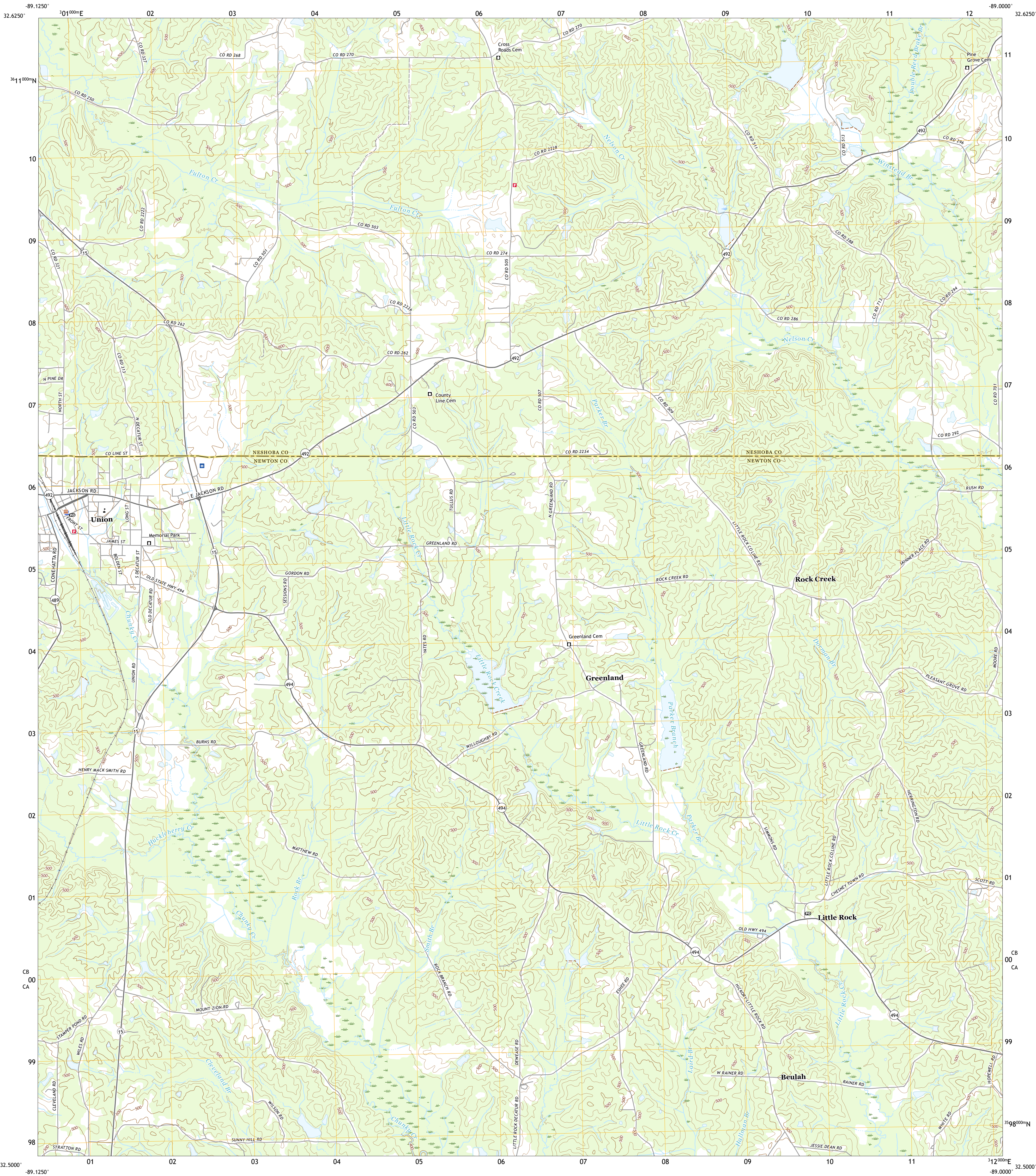




U.S. DEPARTMENT OF THE INTERIOR
U.S. GEOLOGICAL SURVEY

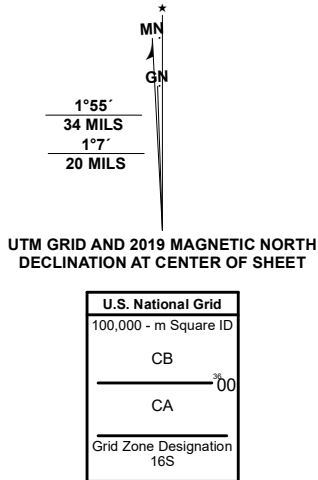


UNION EAST QUADRANGLE
MISSISSIPPI
7.5-MINUTE SERIES



Produced by the United States Geological Survey

North American Datum of 1983 (NAD83)
World Geodetic System of 1984 (WGS84). Projection and
1 000-meter grid/Universal Transverse Mercator, Zone 16S
This map is not a legal document. Boundaries may be
generalized for this map scale. Private lands within government
reservations may not be shown. Obtain permission before
entering private lands.
Imagery.....NAIP, December 2020
Roads.....U.S. Census Bureau, 2017
Names.....GNIS, 1980-2020
Hydrography.....National Hydrography Dataset, 2002-2017
Contours.....National Elevation Dataset, 2014
Boundaries.....Multiple sources: see metadata file, 2018-2019
Public Land Survey System.....BLM, 2017
Wetlands.....FWS National Wetlands Inventory, Not Available



CONTOUR INTERVAL 20 FEET
NORTH AMERICAN VERTICAL DATUM OF 1988
This map was produced to conform with the
National Geospatial Program US Topo Product Standard, 2011.
A metadata file associated with this product is draft version 0.6.18



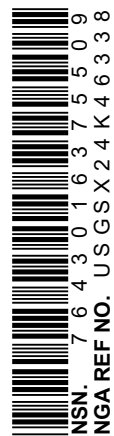
QUADRANGLE LOCATION

| | | |
|---|---|---|
| 1 | 2 | 3 |
| 4 | 5 | 6 |
| 7 | 8 | |

1 McDonald
2 Deemer
3 House
4 Union West
5 Post
6 Decatur NW
7 Decatur
8 Duffee

| ROAD CLASSIFICATION | | |
|---------------------|-----------------|-------------|
| Expressway | Local Connector | |
| Secondary Hwy | Local Road | |
| Ramp | 4WD | |
| Interstate Route | US Route | State Route |

UNION EAST, MS
2020



NSN 7540-01-603-5098
USGS X 2 4 K 4 6 3 8
NSA REF NO.