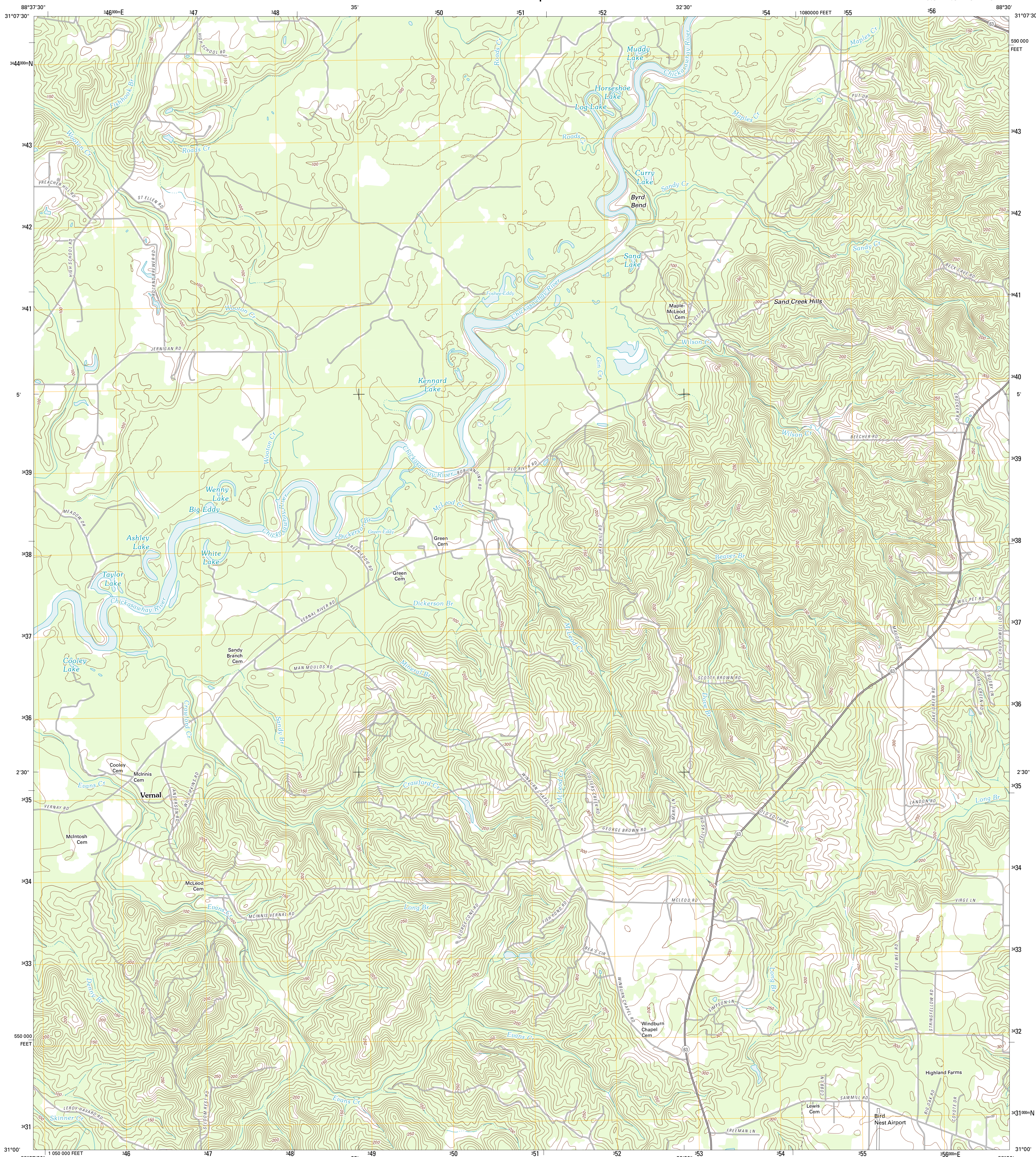




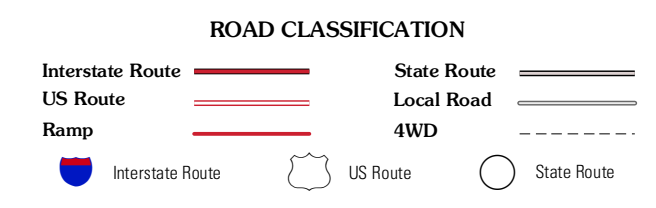
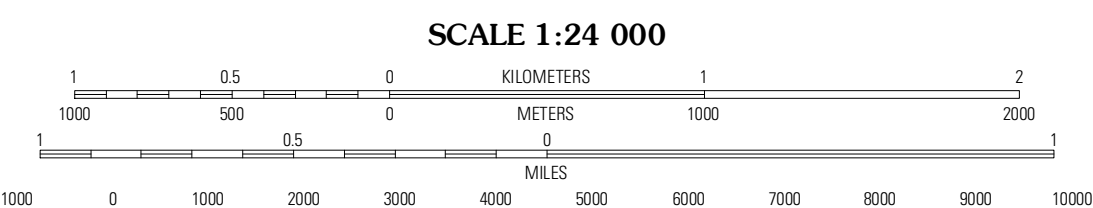
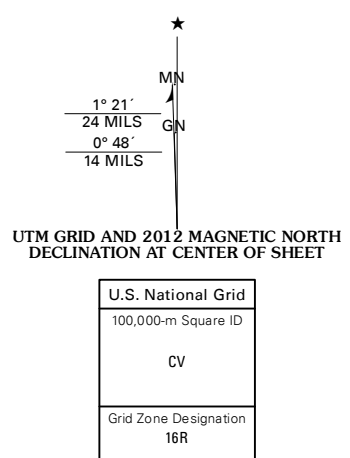
U.S. DEPARTMENT OF THE INTERIOR
U. S. GEOLOGICAL SURVEY



VERNAL QUADRANGLE
MISSISSIPPI-GREENE CO.
7.5-MINUTE SERIES



Produced by the United States Geological Survey
North American Datum of 1983 (NAD83)
World Geodetic System of 1984 (WGS84) Projection and
10 000-foot ticks: Mississippi Coordinate System of 1983
(east zone)



Imagery:.....NAP, May 2010 - September 2010
Roads:.....©2006-2011 TomTom
Names:.....GNIS, 2011
Hydrography:.....National Hydrography Dataset, 2010
Contours:.....National Elevation Dataset, 2010
Boundaries:.....Census, IBWC, IBC, USGS, 1972 - 2010

CONTOUR INTERVAL 10 FEET
NORTH AMERICAN VERTICAL DATUM OF 1988
This map was produced to conform with the
National Geospatial Program US Topo Product Standard, 2011.
A metadata file associated with this product is draft version 0.6.2

QUADRANGLE LOCATION

Jonathan	Leukewille	Rounsaville
Leukewille SW	Vernal	Brown Town
Merrill	Lucedale	Earville

ADJOINING 7.5' QUADRANGLES

VERNAL, MS
2012