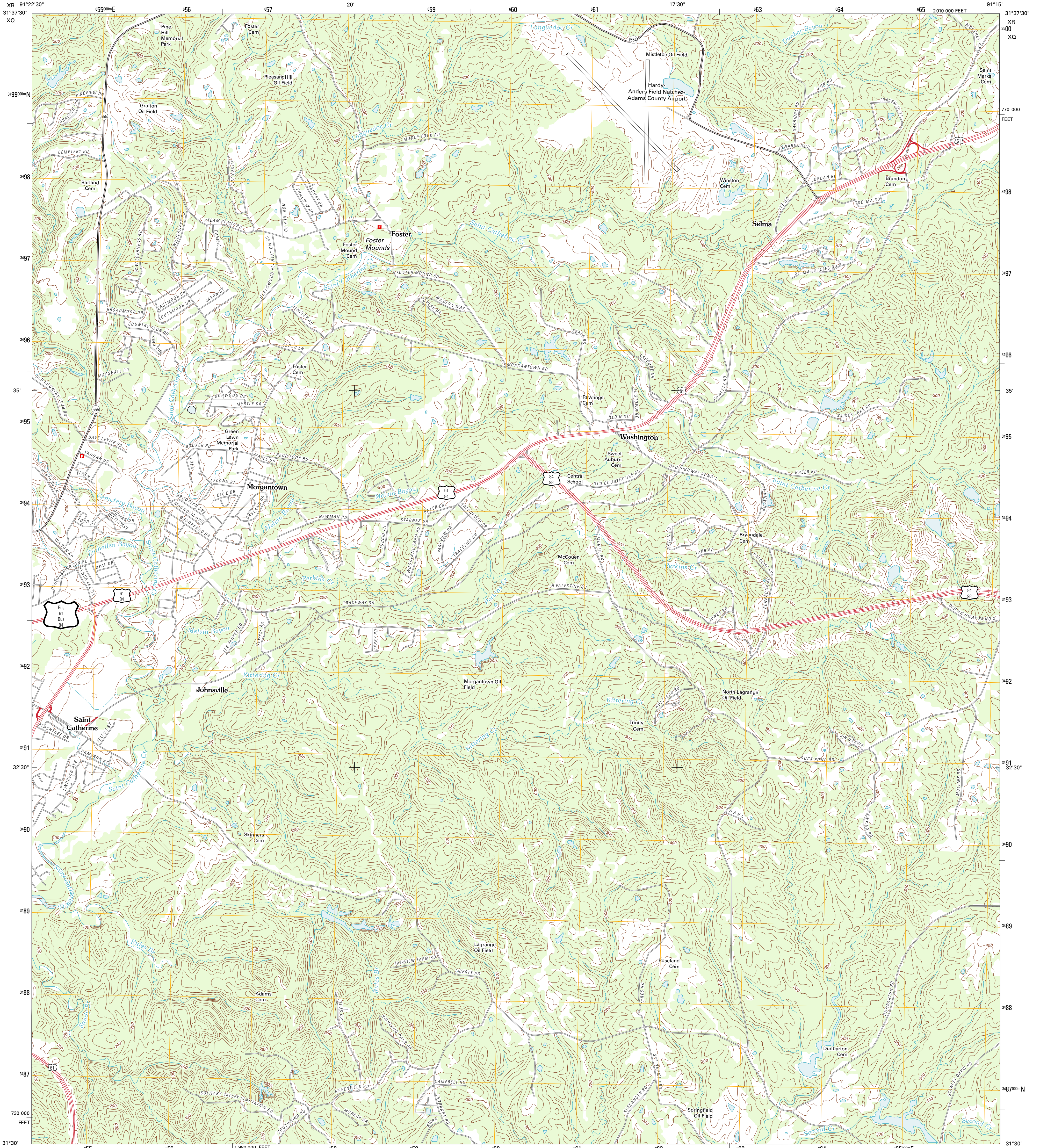




U.S. DEPARTMENT OF THE INTERIOR
U. S. GEOLOGICAL SURVEY



WASHINGTON QUADRANGLE
MISSISSIPPI-ADAMS CO.
7.5-MINUTE SERIES

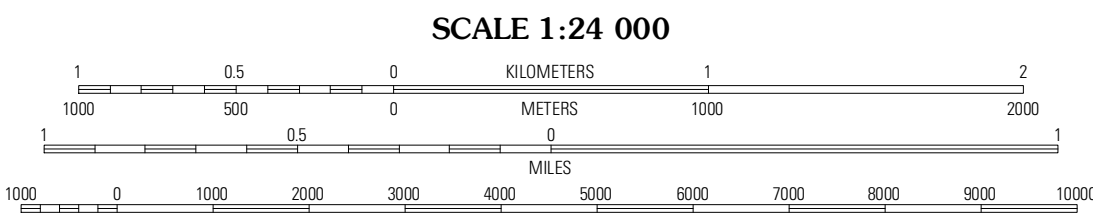


Produced by the United States Geological Survey
North American Datum of 1983 (NAD83)
World Geodetic System of 1984 (WGS84). Projection and
1 000-foot ticks: Mississippi Coordinate System of 1983
(west zone)

Imagery.....NAIP, August 2010
Roads.....©2006-2011 TTM
Names.....GNIS, 2011
Hydrography.....National Hydrography Dataset, 2010
Contours.....National Elevation Dataset, 2008
Boundaries.....Census, IBWC, IBC, USGS, 1972 - 2010

UTM GRID AND 2012 MAGNETIC NORTH
DECLINATION AT CENTER OF SHEET

U.S. National Grid
100,000-m Square ID
XR 750
XQ 750
Grid Zone Designation
18R



CONTOUR INTERVAL 20 FEET
NORTH AMERICAN VERTICAL DATUM OF 1988

This map was produced to conform with the
National Geospatial Program US Topo Product Standard, 2011.
A metadata file associated with this product is draft version 0.6.2



QUADRANGLE LOCATION		
Spokane	Pine Ridge	Church Hill
Natchez	Washington	Crandall
Sibley	Kingston	Jeannette

ROAD CLASSIFICATION	
Interstate Route	State Route
US Route	Local Road
Ramp	4WD
Interstate Route	US Route
	State Route

WASHINGTON, MS
2012