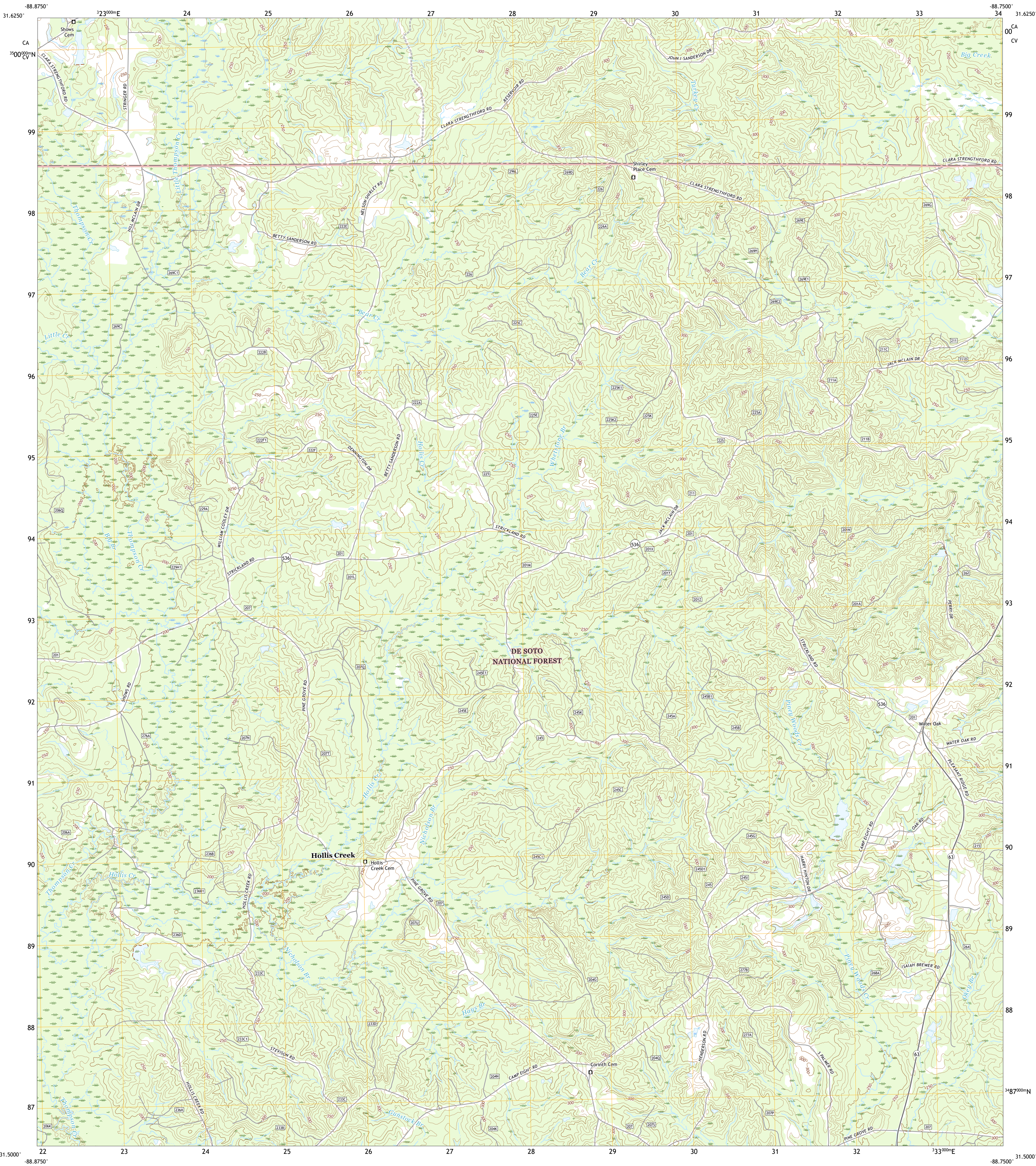




U.S. DEPARTMENT OF THE INTERIOR  
U.S. GEOLOGICAL SURVEY

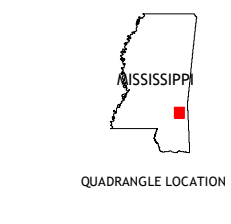
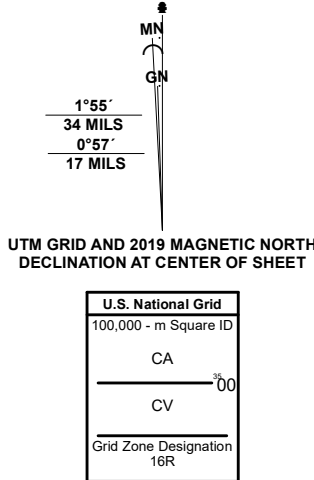


WATER OAK QUADRANGLE  
MISSISSIPPI - WAYNE COUNTY  
7.5-MINUTE SERIES



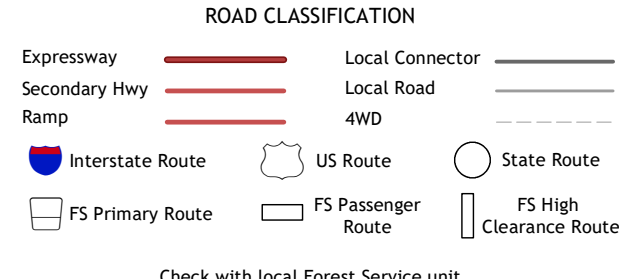
Produced by the United States Geological Survey

North American Datum of 1983 (NAD83)  
World Geodetic System of 1984 (WGS84) Projection and  
1 000-meter grid/Universal Transverse Mercator, Zone 16R  
This map is not a legal document. Boundaries may be  
generalized for this map scale. Private lands within government  
reservations may not be shown. Obtain permission before  
entering private lands.  
Imagery.....NAIP, December 2020  
Roads.....U.S. Census Bureau, 2017  
Names.....GNH, 1980-2020  
Hydrography.....National Hydrography Dataset, 2002-2019  
Contours.....National Elevation Dataset, 2016  
Boundaries.....Multiple sources; see metadata file, 2018-2019  
Public Land Survey System.....BLM, 2017  
Wetlands.....FWS National Wetlands Inventory, Not Available



1	2	3
4	5	6
7	8	9

1 Myrick  
2 Whistler  
3 Waynesboro  
4 Strengthford  
5 Clara  
6 Rhodes  
7 Mulberry  
8 Pieve



Check with local Forest Service unit  
for current travel conditions and restrictions.

WATER OAK, MS  
2021

