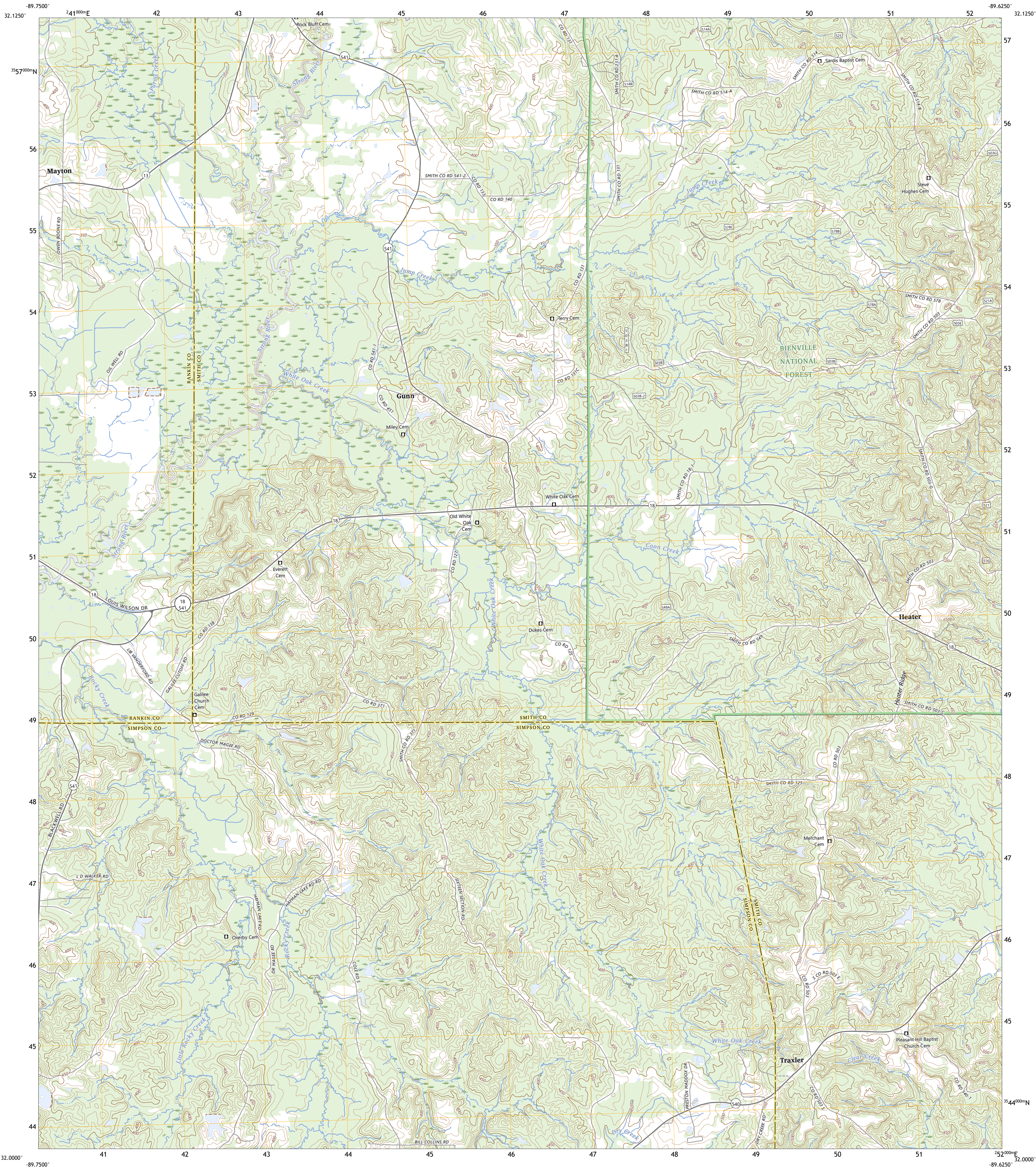




U.S. DEPARTMENT OF THE INTERIOR  
U.S. GEOLOGICAL SURVEY



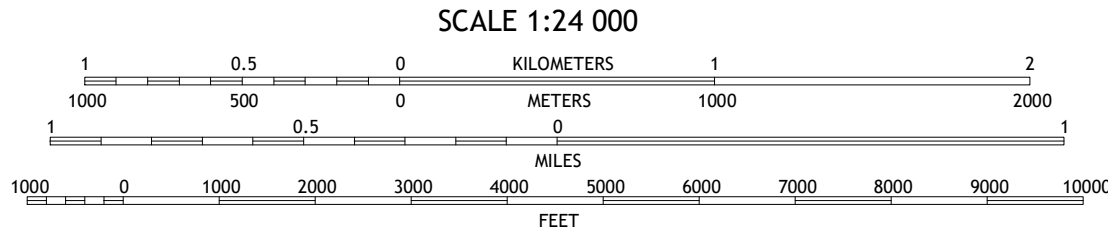
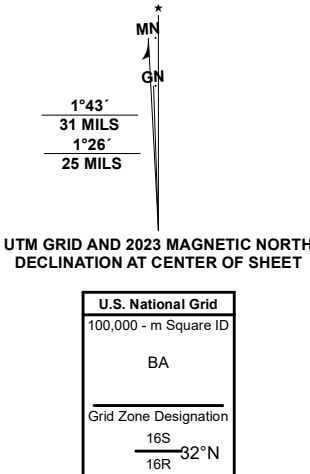
WHITE OAK QUADRANGLE  
MISSISSIPPI  
7.5-MINUTE SERIES



Produced by the United States Geological Survey

North American Datum of 1983 (NAD83)  
World Geodetic System of 1984 (WGS84) Projection and  
1 000-meter grid/Universal Transverse Mercator, Zone 16S16R  
This map is not a legal document. Boundaries may be  
generalized for this map scale. Private lands within government  
reservations may not be shown. Obtain permission before  
entering private lands.

Imagery.....NAIP, June 2020 - June 2020  
Roads.....U.S. Census Bureau, 2017 - 2017  
Roads within US Forest Service Lands.....FS Topo Data  
with Limited Forest Service updates, 2013 - 2018  
Names.....GNIS, 1980 - 2022  
Hydrography.....National Hydrography Dataset, 2004 - 2022  
Contours.....National Elevation Dataset, 2022  
Boundaries.....Multiple sources; see metadata file 2017 - 2022  
Public Land Survey System.....BLM, 2017  
Wetlands.....FWS National Wetlands Inventory Not Available



CONTOUR INTERVAL 10 FEET  
NORTH AMERICAN VERTICAL DATUM OF 1988  
This map was produced to conform with the  
National Geospatial Program US Topo Product Standard.



1	2	3
4	5	6
7	8	9

ADJOINING QUADRANGLES

- 1 Johns
- 2 Polkville
- 3 Homewood
- 4 Puckett
- 5 Raleigh
- 6 Mendenhall East
- 7 Magee North
- 8 Cohay

ROAD CLASSIFICATION	
Expressway	Local Connector
Secondary Hwy	Local Road
Interstate Route	US Route
FS Primary Route	FS Passenger Route
	FS High Clearance Route

Check with local Forest Service unit  
for current travel conditions and restrictions.

WHITE OAK, MS  
2024

