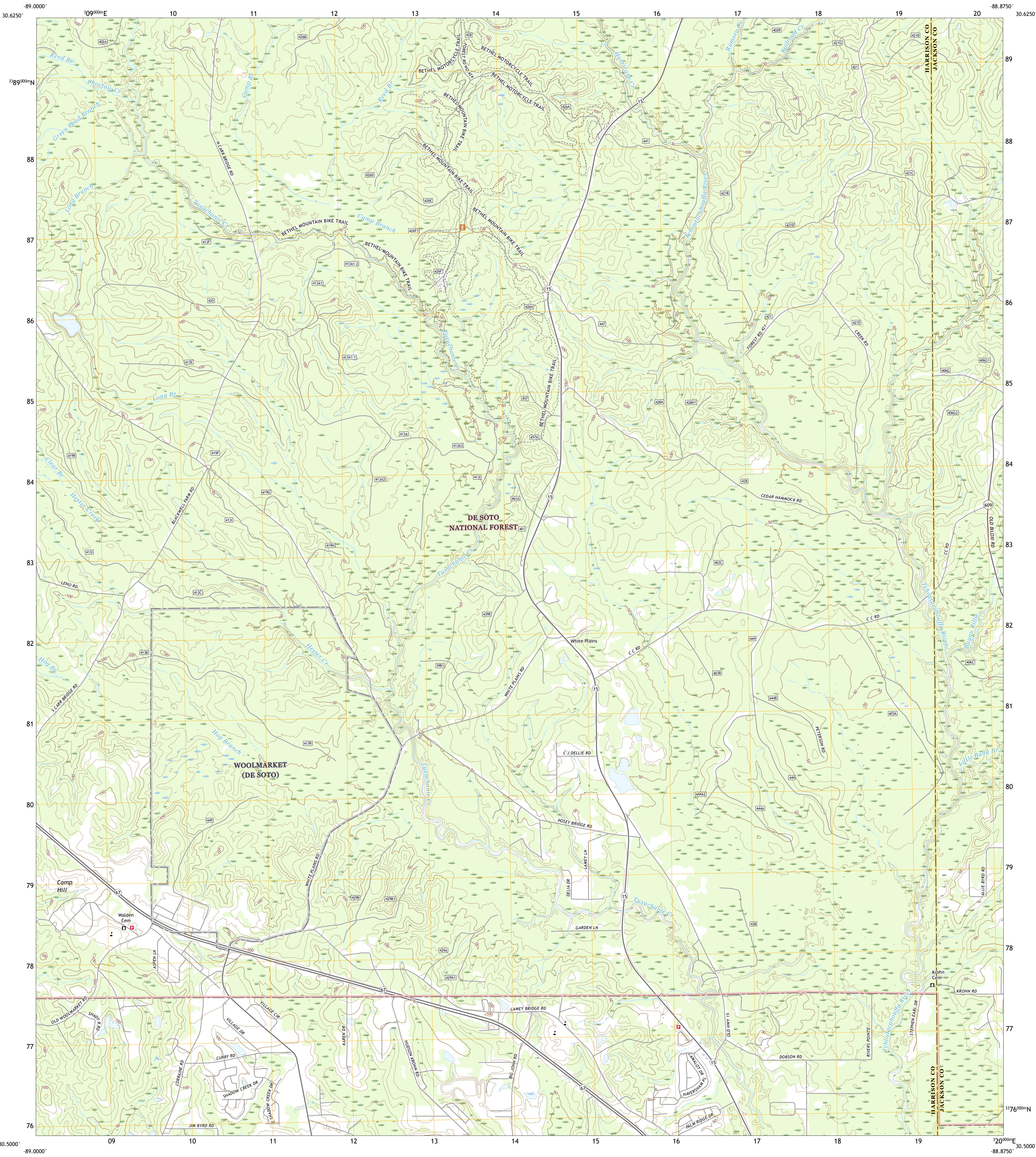




U.S. DEPARTMENT OF THE INTERIOR
U.S. GEOLOGICAL SURVEY

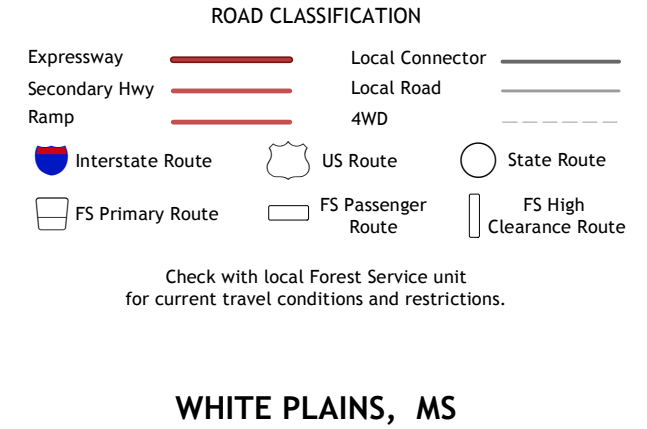
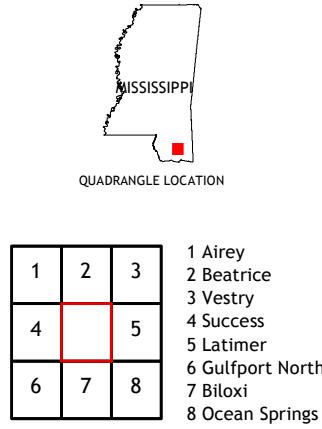
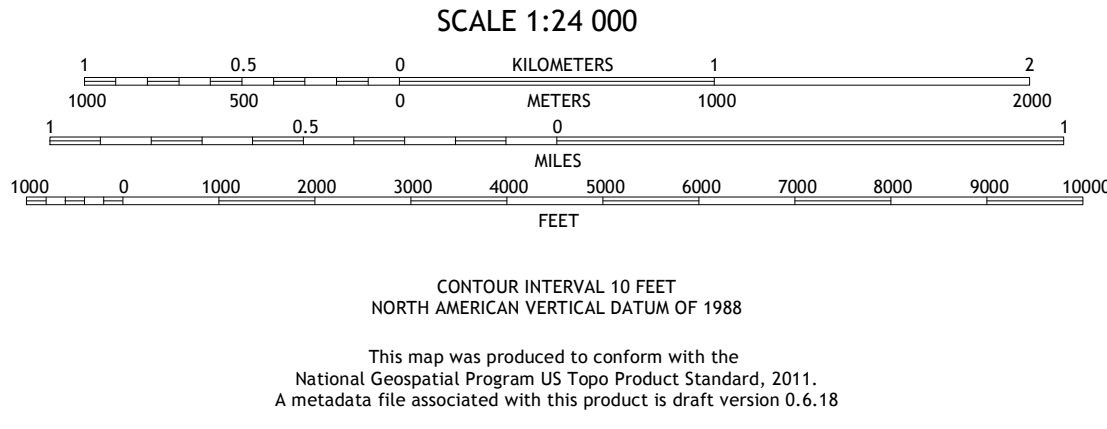
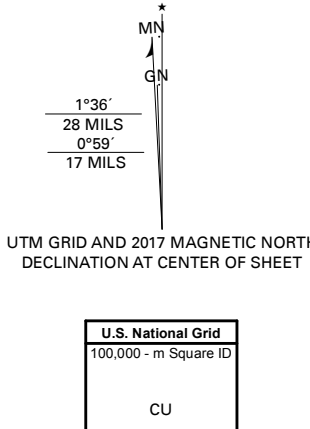


WHITE PLAINS QUADRANGLE
MISSISSIPPI
7.5-MINUTE SERIES



Produced by the United States Geological Survey
North American Datum of 1983 (NAD83)
World Geodetic System of 1984 (WGS84). Projection and
1 000-meter grid: Universal Transverse Mercator, Zone 16R
This map is not a legal document. Boundaries may be
generalized for this map scale. Private lands within government
reservations may not be shown. Obtain permission before
entering private lands.

Imagery.....NAIP, September 2016 - October 2016
Roads.....U.S. Census Bureau, 2017
Data within US Forest Service Lands.....FS Topo
with limited Forest Service updates, 2015 - 2017
Names.....GNIS, 1980 - 2016
Hydrography.....National Hydrography Dataset, 2004 - 2018
Contours.....National Elevation Dataset, 2018
Boundaries.....Multiple sources; see metadata file, 2017
Public Land Survey System.....BLM, 2017
Wetlands.....FWS National Wetlands Inventory 1980 - 2007



WHITE PLAINS, MS
2018

