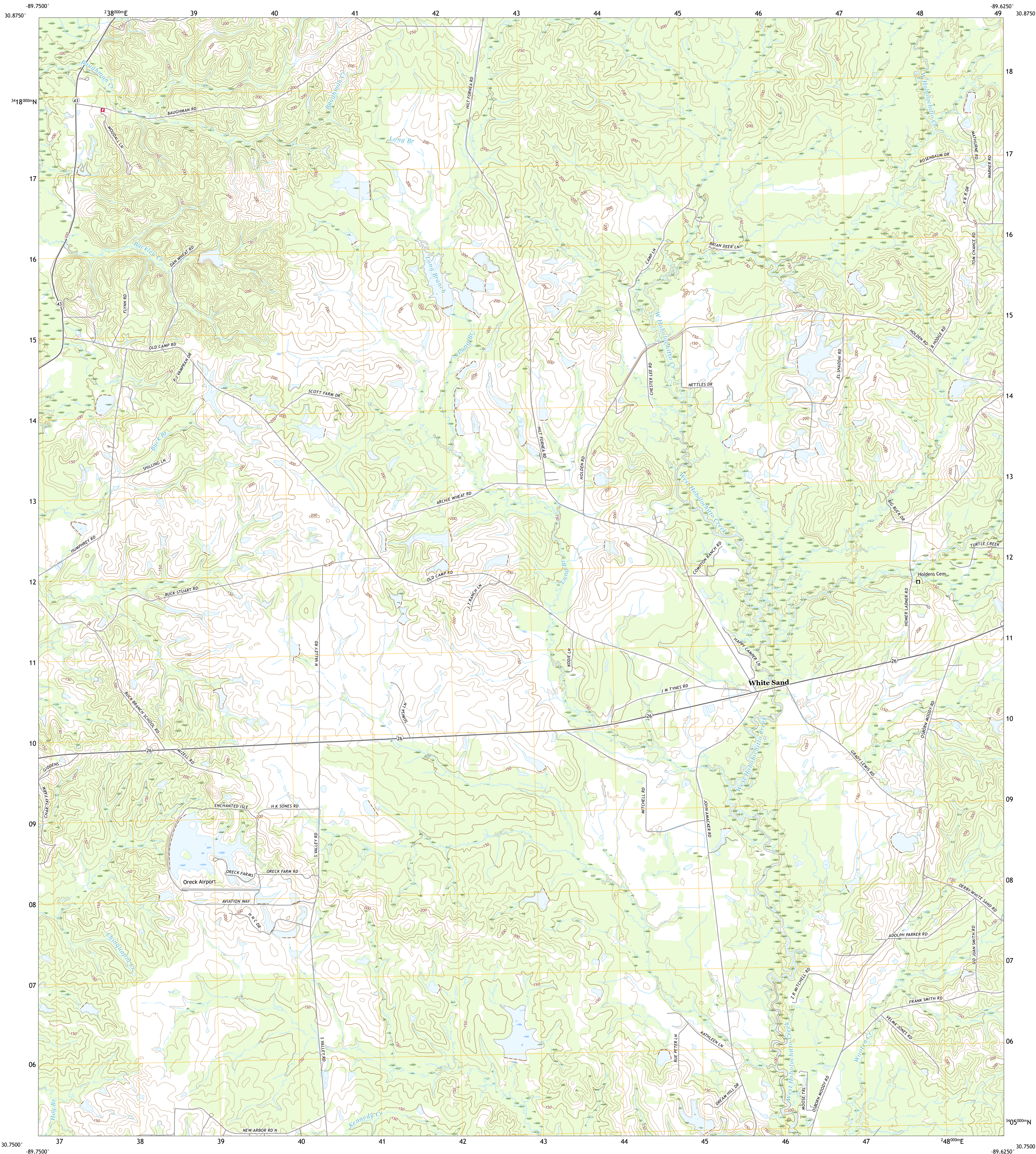




U.S. DEPARTMENT OF THE INTERIOR  
U.S. GEOLOGICAL SURVEY



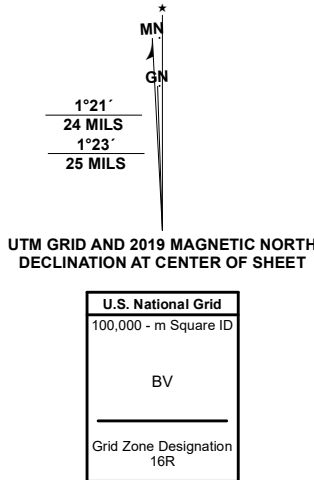
WHITE SAND QUADRANGLE  
MISSISSIPPI - PEARL RIVER COUNTY  
7.5-MINUTE SERIES



Produced by the United States Geological Survey

North American Datum of 1983 (NAD83)  
World Geodetic System of 1984 (WGS84) - Projection and  
1 000-meter grid/Universal Transverse Mercator, Zone 16R  
This map is not a legal document. Boundaries may be  
generalized for this map scale. Private lands within government  
reservations may not be shown. Obtain permission before  
entering private lands.

Imagery.....NAIP, December 2020  
Roads.....U.S. Census Bureau, 2017  
Names.....GNIS, 1980-2020  
Hydrography.....National Hydrography Dataset, 2006-2019  
Contours.....National Elevation Dataset, 2008-2018  
Boundaries.....Multiple sources: see metadata file, 2018-2019  
Public Land Survey System.....BLM, 2017  
Wetlands.....FWS National Wetlands Inventory Not Available



CONTOUR INTERVAL 10 FEET  
NORTH AMERICAN VERTICAL DATUM OF 1988

This map was produced to conform with the  
National Geospatial Program US Topo Product Standard, 2011.  
A metadata file associated with this product is draft version 0.6.18



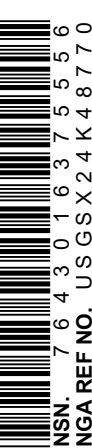
1	2	3
4	5	6
7	8	

ADJOINING QUADRANGLES

- 1 Angle
- 2 Fords Creek
- 3 Orvisburg
- 4 Bogalusa East
- 5 Poplarville
- 6 Henleyfield
- 7 McNeill
- 8 Willard

ROAD CLASSIFICATION		
Expressway	Local Connector	
Secondary Hwy	Local Road	
Ramp	4WD	
Interstate Route	US Route	State Route

WHITE SAND, MS  
2020



NSN 1643016375556  
NSA REF NO. USGSX24K48770