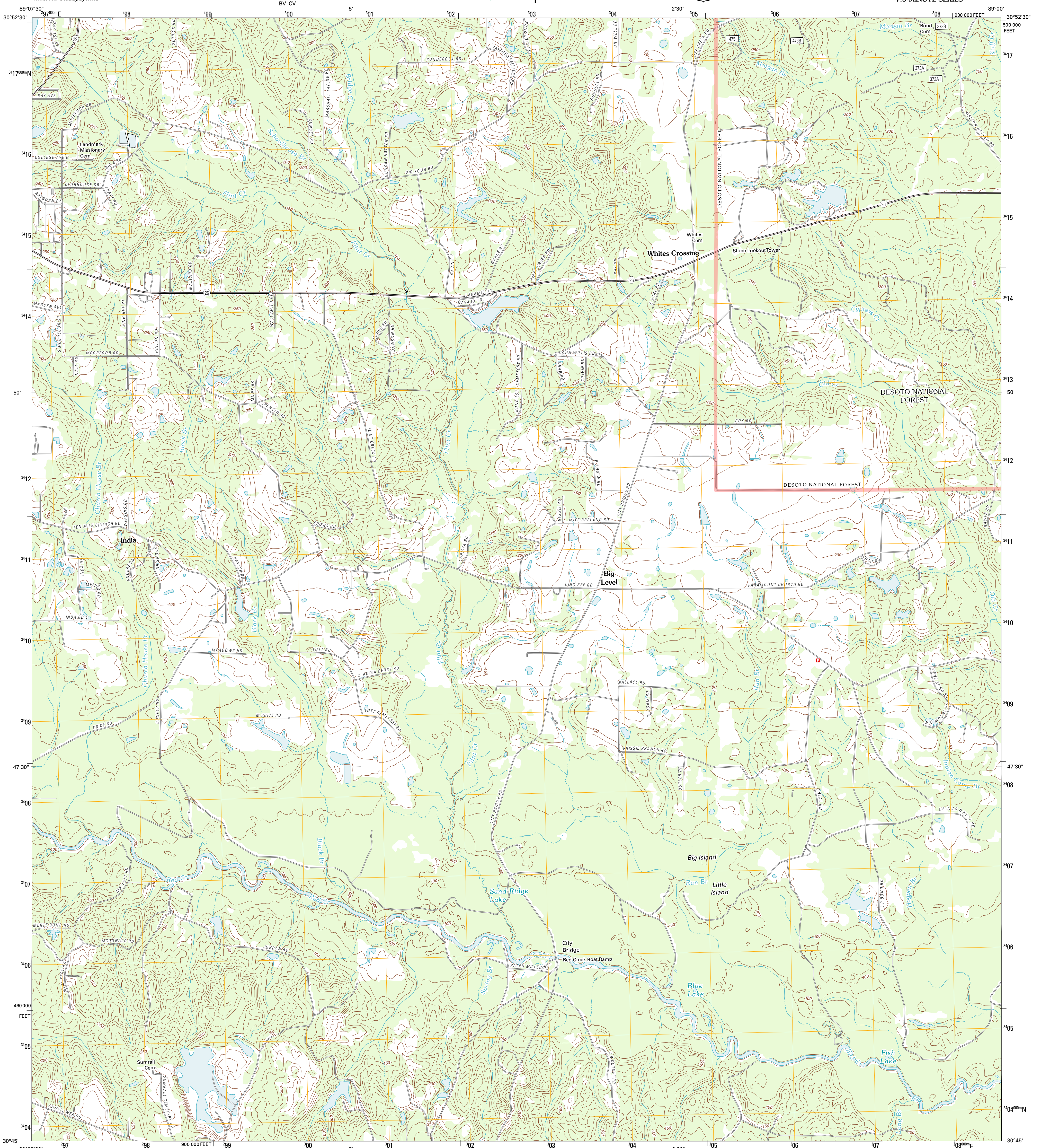




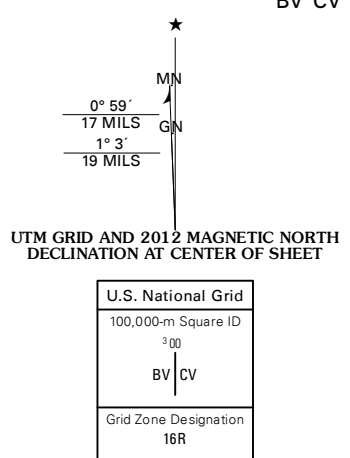
U.S. DEPARTMENT OF THE INTERIOR
U. S. GEOLOGICAL SURVEY



WHITES CROSSING QUADRANGLE
MISSISSIPPI-STONE CO.
7.5-MINUTE SERIES



Produced by the United States Geological Survey
North American Datum of 1983 (NAD83)
World Geodetic System of 1984 (WGS84), Projection and
1 000-meter grid; Universal Transverse Mercator, Zone 16R
10 000-foot ticks; Mississippi Coordinate System of 1983
(east zone)



CONTOUR INTERVAL 10 FEET
NORTH AMERICAN VERTICAL DATUM OF 1988

This map was produced to conform with the
National Geospatial Program US Topo Product Standard, 2011.
A metadata file associated with this product is draft version 0.6.2

Imagery: NAIP, August 2010
Roads: ©2006-2011 TomTom
Roads within US Forest Service Lands: FSTopo Data with limited Forest Service updates, 2009
Names: ©2011 GNS, 2011
Hydrography: National Hydrography Dataset, 2010
Contours: National Elevation Dataset, 2010
Boundaries: Census, IBWC, IBC, USGS, 1972 - 2010

ROAD CLASSIFICATION

Interstate Route	State Route
US Route	Local Road
Ramp	4WD
Interstate Route	US Route
FS Primary Route	FS Passenger Route
	FS High Clearance Route

Check with local Forest Service unit for current travel conditions and restrictions.

WHITES CROSSING, MS
2012

ADJOINING 7.5 QUADRANGLES

Bond	Bond Pond	Barbara
Wiggins	Whites Crossing	Ramsay Springs
McHenry	Alley	Beatrice