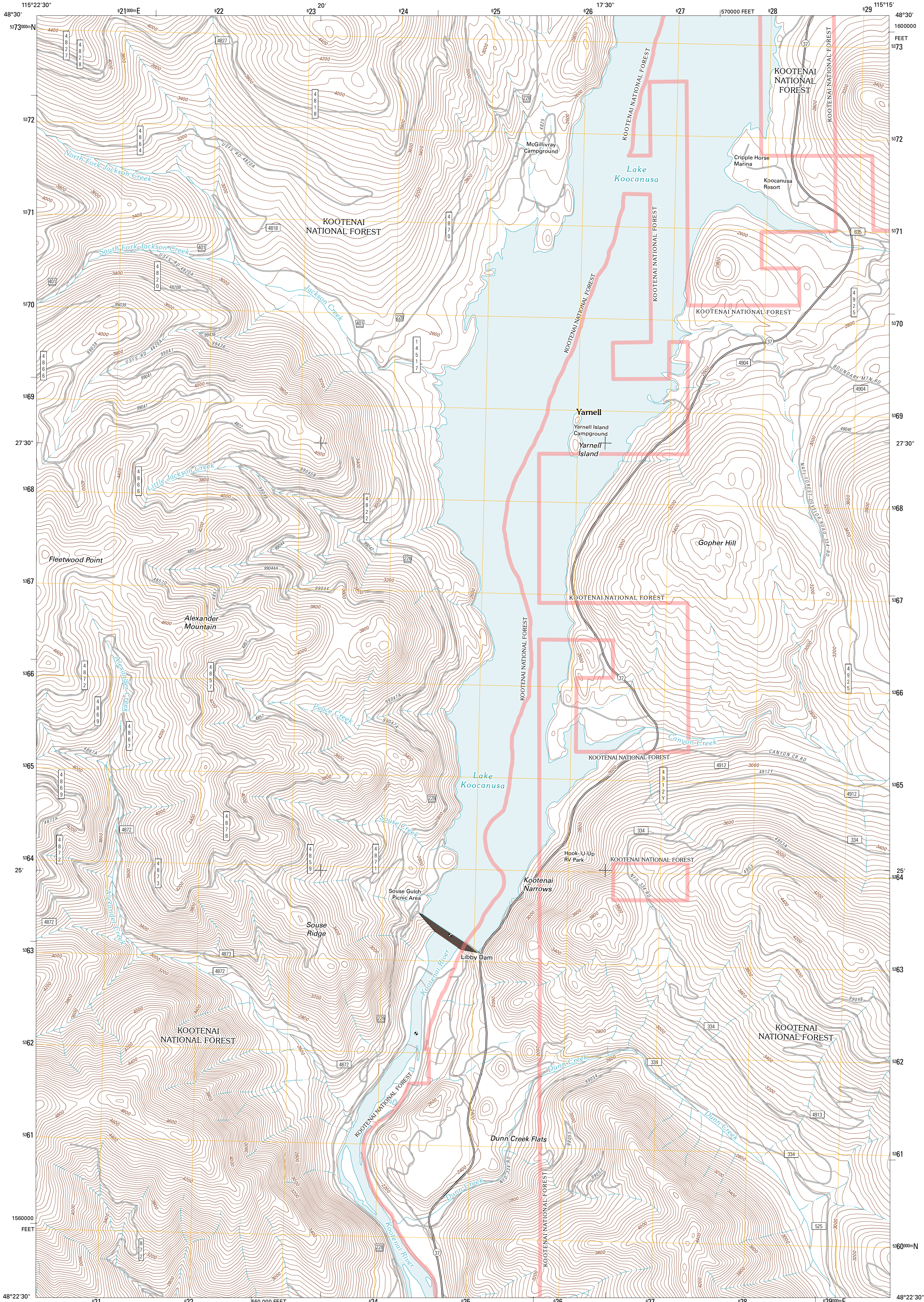




U.S. DEPARTMENT OF THE INTERIOR
U. S. GEOLOGICAL SURVEY

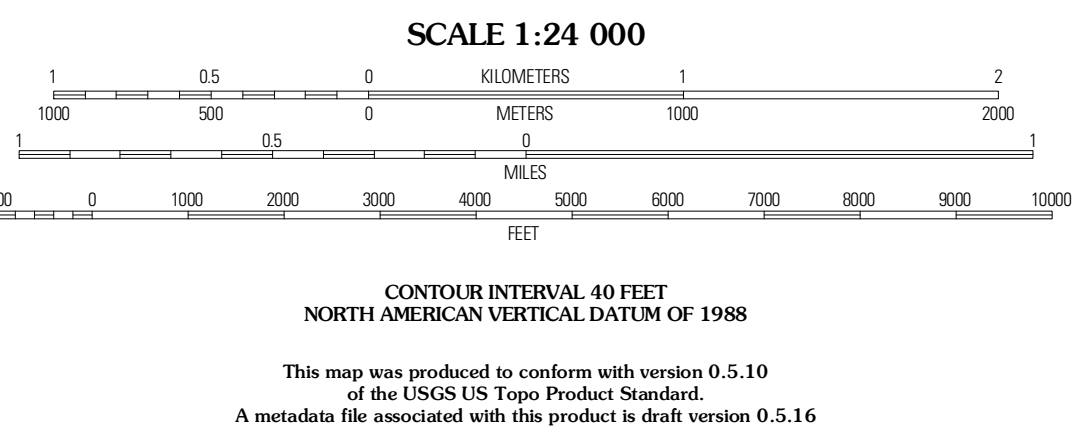
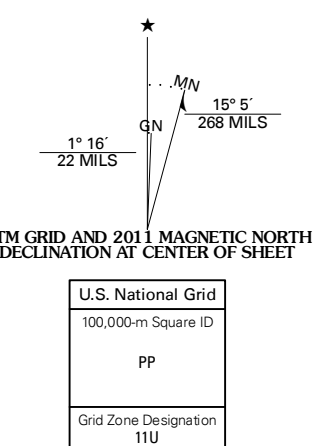


ALEXANDER MOUNTAIN QUADRANGLE
MONTANA-LINCOLN CO.
7.5-MINUTE SERIES



Produced by the United States Geological Survey
North American Datum of 1983 (NAD83)
World Geodetic System of 1984 (WGS84). Projection and
1 000-meter grid: Universal Transverse Mercator, Zone 11U
10 000-foot ticks: Montana Coordinate System of 1983

Imagery: NADP, July 2009
Roads: ©2006-2010 Tele Atlas
Roads within US Forest Service Lands: FSTopo Data
with limited Forest Service updates, 2009
Names: ©2006-2010
Hydrography: National Hydrography Dataset, 2009
Contours: National Elevation Dataset, 2003
Boundaries: Census, IBWC, IBC, USGS, 1972 - 2010



QUADRANGLE LOCATION

Barfield Mountain	Ural Creek	Vickour Gulch
Vermiculate Mountain	Alexander Mountain	Cripple Horse Mountain
Suede Mountain	Tony Peak	Richards Mountain

ROAD CLASSIFICATION

Interstate Route	State Route
US Route	Local Road
Ramp	4WD

Check with local Forest Service unit for current travel conditions and restrictions.

ALEXANDER MOUNTAIN, MT
2011

ADJOINING 7.5' QUADRANGLES