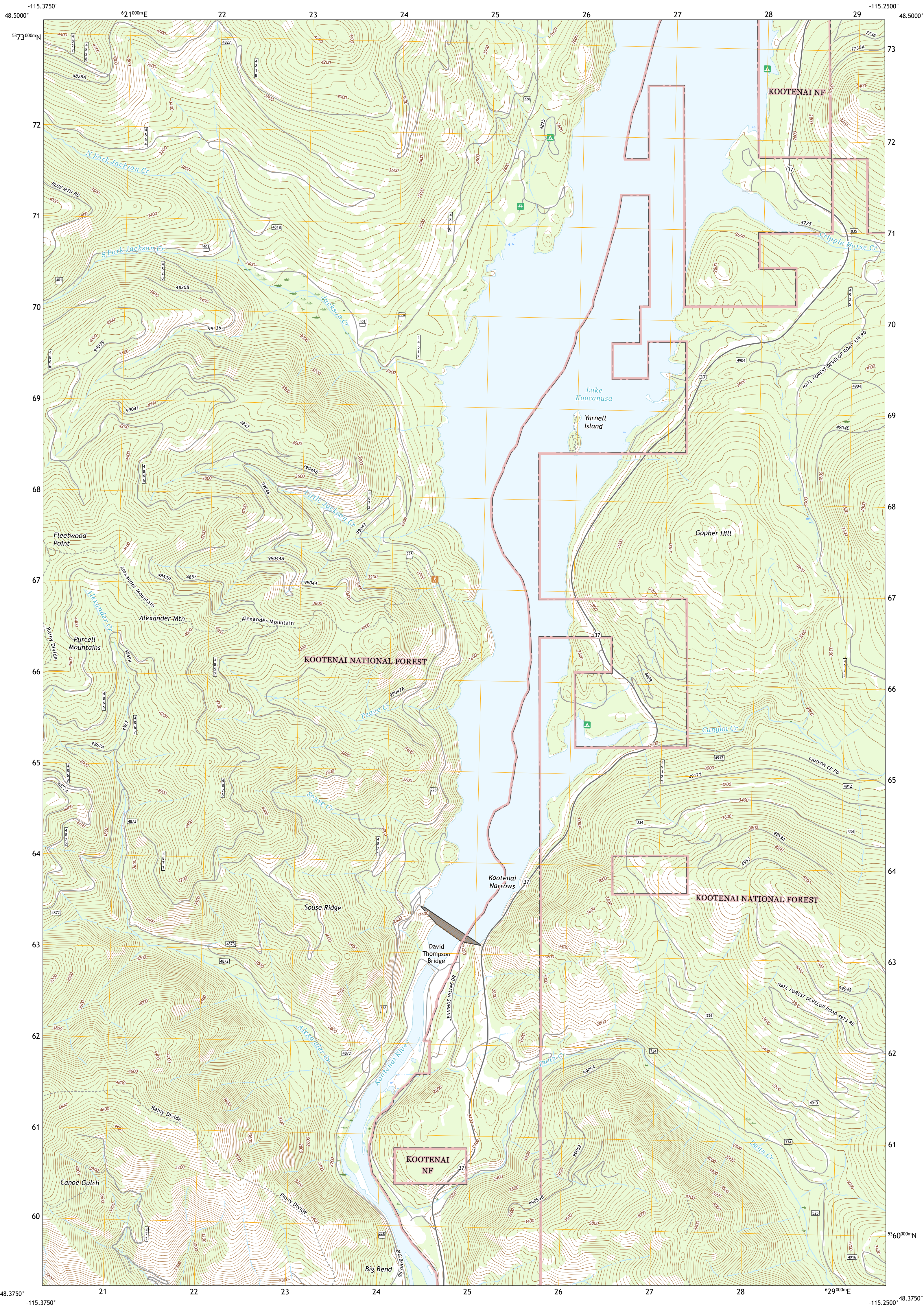




U.S. DEPARTMENT OF THE INTERIOR  
U.S. GEOLOGICAL SURVEY



ALEXANDER MOUNTAIN QUADRANGLE  
MONTANA - LINCOLN COUNTY  
7.5-MINUTE SERIES



Produced by the United States Geological Survey  
North American Datum of 1983 (NAD83)  
World Geodetic System of 1984 (WGS84). Projection and  
1 000-meter grid: Universal Transverse Mercator, Zone 11U  
This map is not a legal document. Boundaries may be  
generalized for this map scale. Private lands within government  
reservations may not be shown. Obtain permission before  
entering private lands.

Imagery.....NAIP, Not Available  
Roads.....U.S. Census Bureau, 2016  
Roads within US Forest Service Lands.....FS Topo Data  
with Limited Forest Service updates, 2013 - 2017  
Names.....Multiple sources: see metadata file 2018, 2019  
Hydrography.....National Hydrography Dataset, 2002 - 2019  
Contours.....National Elevation Dataset, 2003 - 2006  
Boundaries.....Multiple sources: see metadata file 2018, 2019  
Public Land Survey System.....BLM, 2018  
Wetlands.....FWS National Wetlands Inventory, 2009

