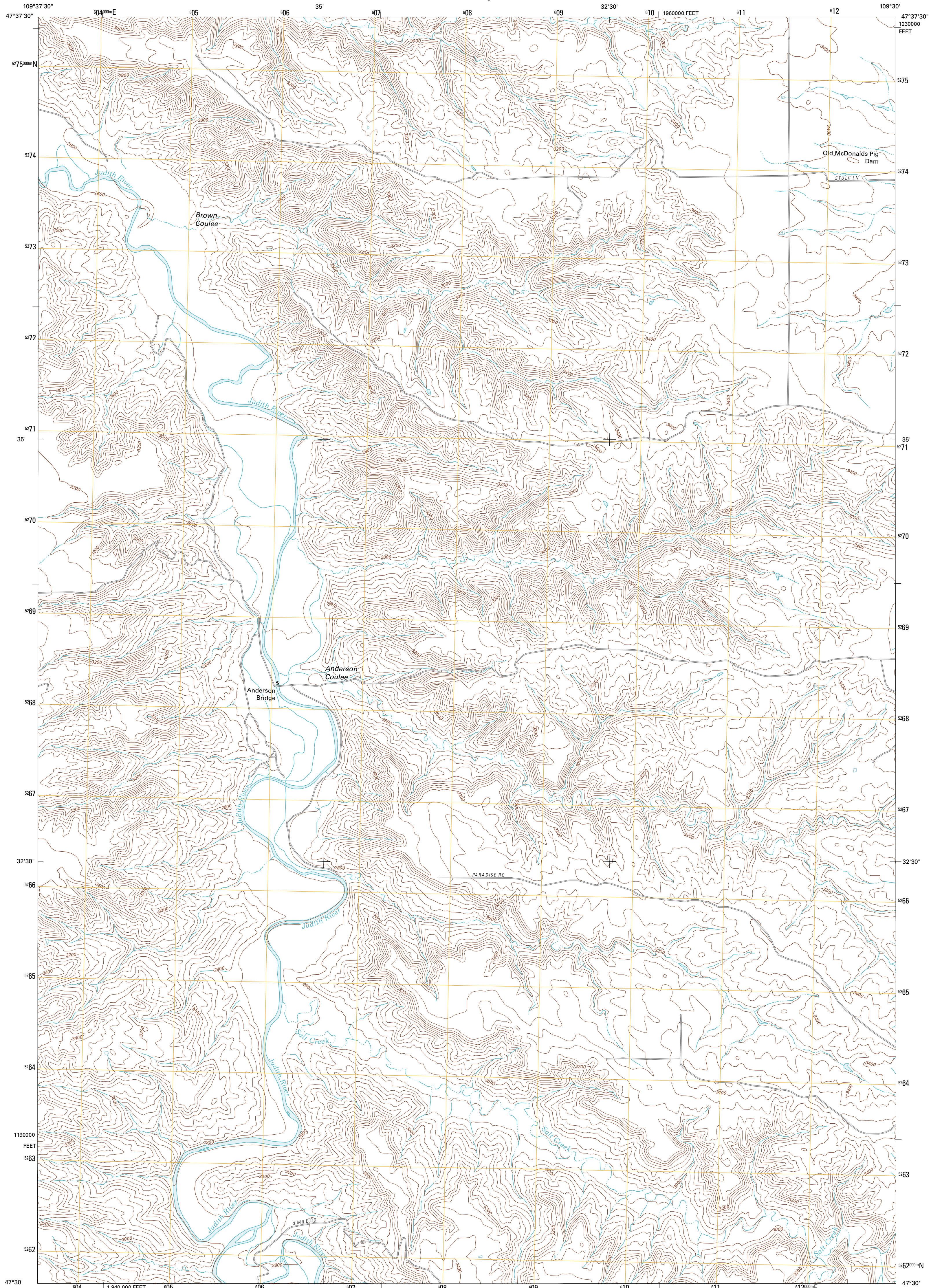




U.S. DEPARTMENT OF THE INTERIOR
U. S. GEOLOGICAL SURVEY



ANDERSON BRIDGE QUADRANGLE
MONTANA-FERGUS CO.
7.5-MINUTE SERIES

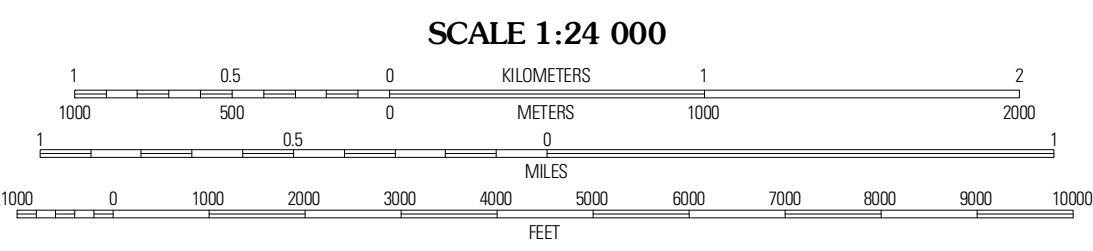


Produced by the United States Geological Survey
North American Datum of 1983 (NAD83)
World Geodetic System of 1984 (WGS84). Projection and
1 000-meter grid. Universal Transverse Mercator, Zone 12T
10 000-foot ticks: Montana Coordinate System of 1983

Imagery.....N.A.P., June 2009
Roads.....©2006-2010 Tele Atlas
Names.....©2006-2010 Tele Atlas
Hydrography.....National Hydrography Dataset, 2009
Contours.....National Elevation Dataset, 2000
Boundaries.....Census, IBWC, IBC, USGS, 1972 - 2010

UTM GRID AND 2011 MAGNETIC NORTH
DECLINATION AT CENTER OF SHEET

U.S. National Grid
XT
Grid Zone Designation
12T



ROAD CLASSIFICATION

Interstate Route	State Route
US Route	Local Road
Ramp	4WD

■ Interstate Route
 US Route
 State Route

QUADRANGLE LOCATION

P N Ranch	Council Island	Gallatin Rapids
Wolf Creek Falls	Anderson Bridge	Winifred West
Wild Bill Flat West	Wild Bill Flat East	Hilger NW

ADJOINING 7.5' QUADRANGLES

CONTOUR INTERVAL 40 FEET
NORTH AMERICAN VERTICAL DATUM OF 1988

This map was produced to conform with version 0.5.10
of the USGS US Topo Product Standard.
A metadata file associated with this product is draft version 0.5.16

ANDERSON BRIDGE, MT
2011