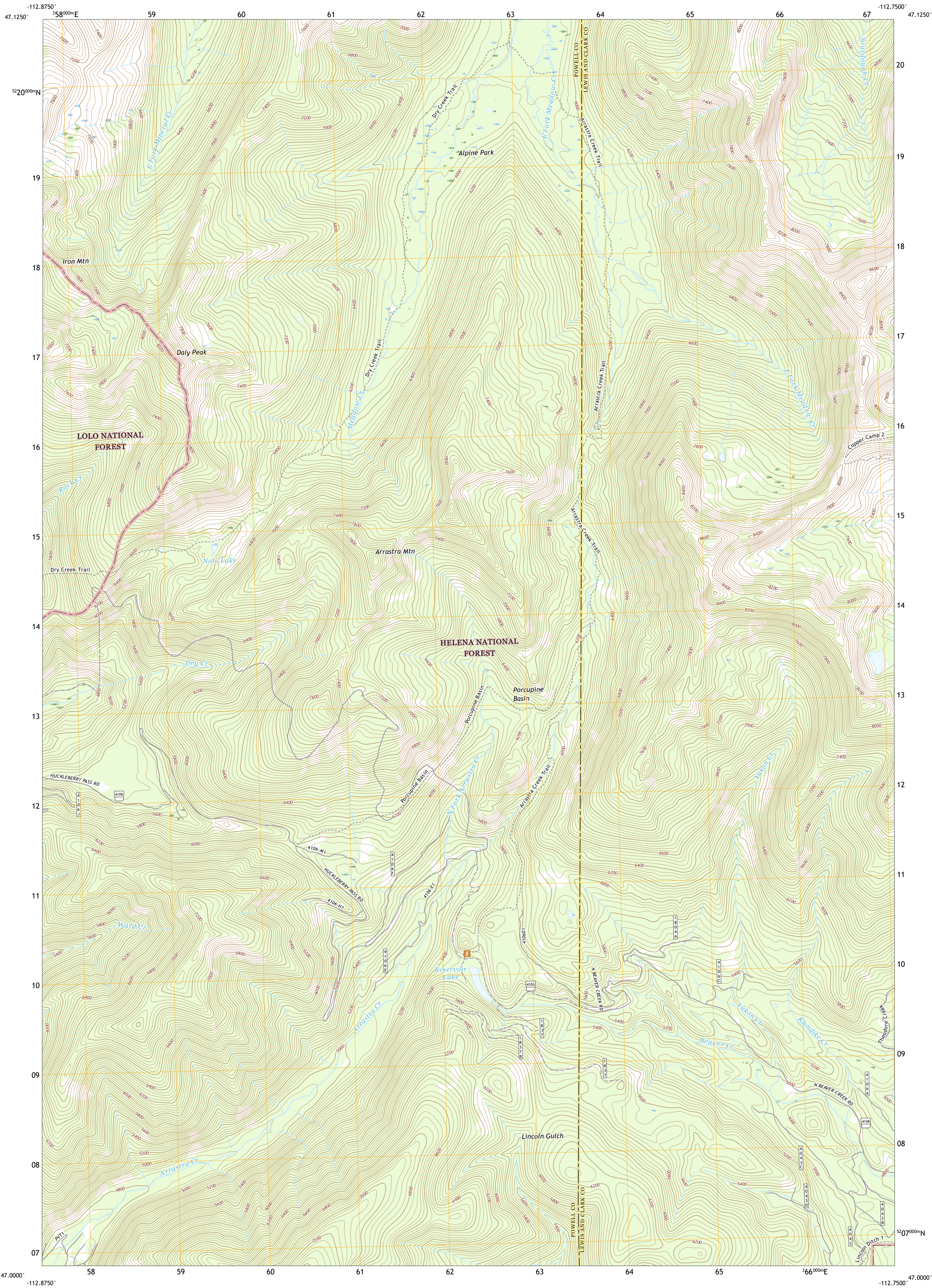




U.S. DEPARTMENT OF THE INTERIOR
U.S. GEOLOGICAL SURVEY



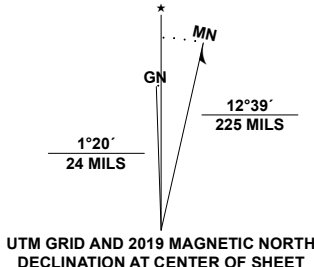
ARRASTRA MOUNTAIN QUADRANGLE
MONTANA
7.5-MINUTE SERIES



Produced by the United States Geological Survey

North American Datum of 1983 (NAD83)
World Geodetic System of 1984 (WGS84). Projection and
1 000-meter grid/Universal Transverse Mercator, Zone 12T
This map is not a legal document. Boundaries may be
generalized for this map scale. Private lands within government
reservations may not be shown. Obtain permission before
entering private lands.

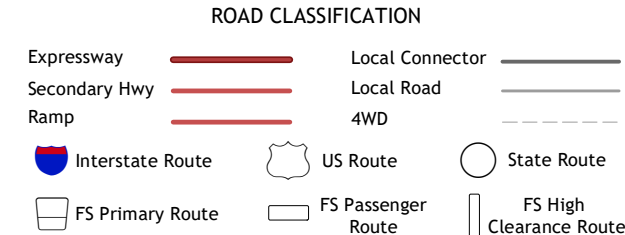
Imagery.....NAIP, October 2015 - January 2016
Roads.....U.S. Census Bureau, Not Available
Roads within US Forest Service Lands.....FSTopo Data
with limited Forest Service updates, 2013
Names.....Multiple sources: see metadata
Hydrography.....National Hydrography Dataset, 2002 - 2019
Contours.....National Elevation Dataset, 2001
Boundaries.....Multiple sources: see metadata
Public Land Survey System.....BLM, 2018
Wetlands.....FWS National Wetlands Inventory, 2009



1	2	3
4	5	6
7	8	9

ADJOINING QUADRANGLES

1 Lake Mountain
2 Olson Peak
3 Heart Lake
4 Coopers Lake
5 Stonewall Mountain
6 Marcum Mountain
7 Moose Creek
8 Lincoln



Check with local Forest Service unit
for current travel conditions and restrictions.

ARRASTRA MOUNTAIN, MT
2020

