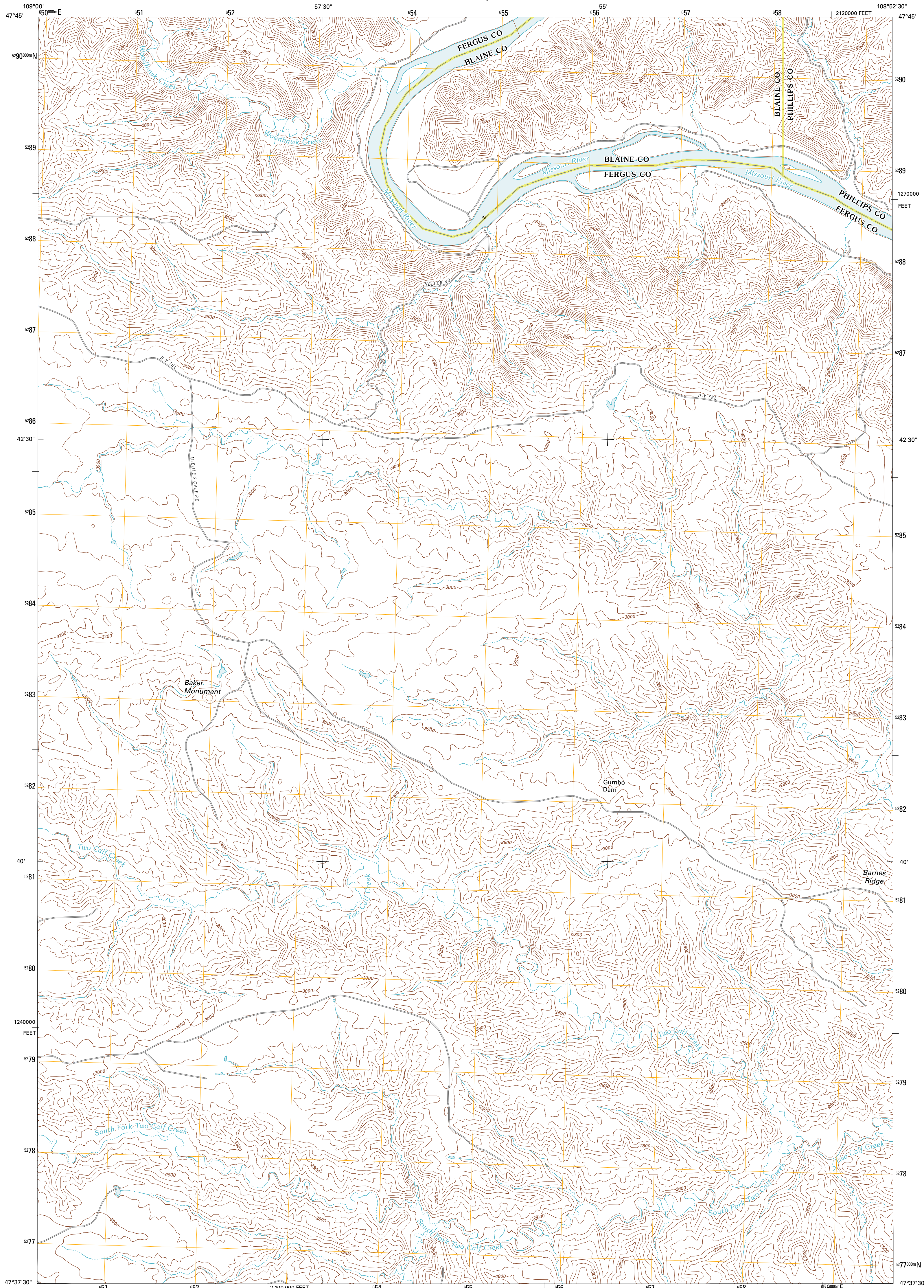




U.S. DEPARTMENT OF THE INTERIOR
U. S. GEOLOGICAL SURVEY

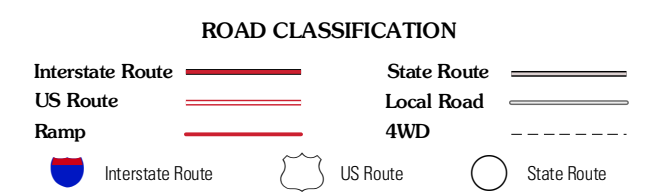
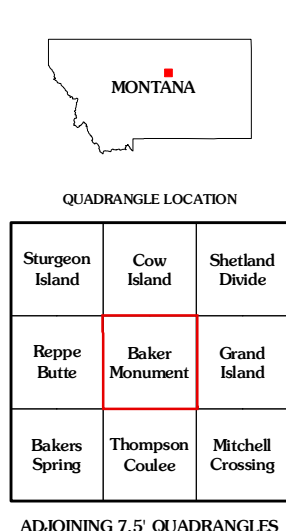
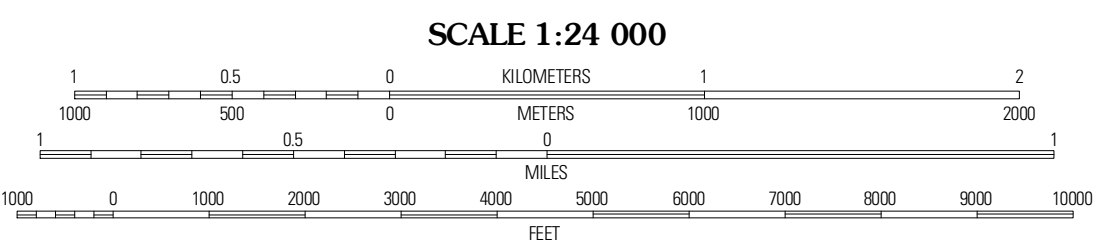
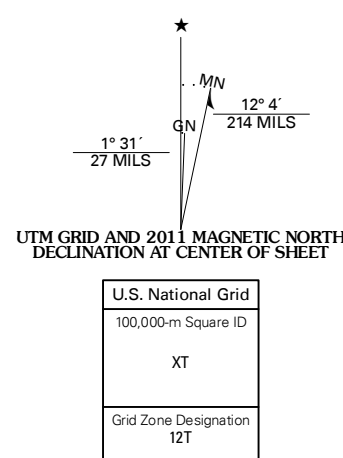


BAKER MONUMENT QUADRANGLE
MONTANA
7.5-MINUTE SERIES



Produced by the United States Geological Survey
North American Datum of 1983 (NAD83)
World Geodetic System of 1984 (WGS84). Projection and
1 000-meter grid. Universal Transverse Mercator, Zone 12T
10 000-foot ticks. Montana Coordinate System of 1983

Imagery.....NAIP, June 2009
Roads.....©2006-2010 Tele Atlas
Names.....National Hydrography Dataset, 2010
Hydrography.....National Hydrography Dataset, 2009
Contours.....National Elevation Dataset, 2000
Boundaries.....Census, IBWC, IBC, USGS, 1972 - 2010



CONTOUR INTERVAL 40 FEET
NORTH AMERICAN VERTICAL DATUM OF 1988

This map was produced to conform with version 0.5.10 of the USGS US Topo Product Standard.
A metadata file associated with this product is draft version 0.5.16

BAKER MONUMENT, MT
2011