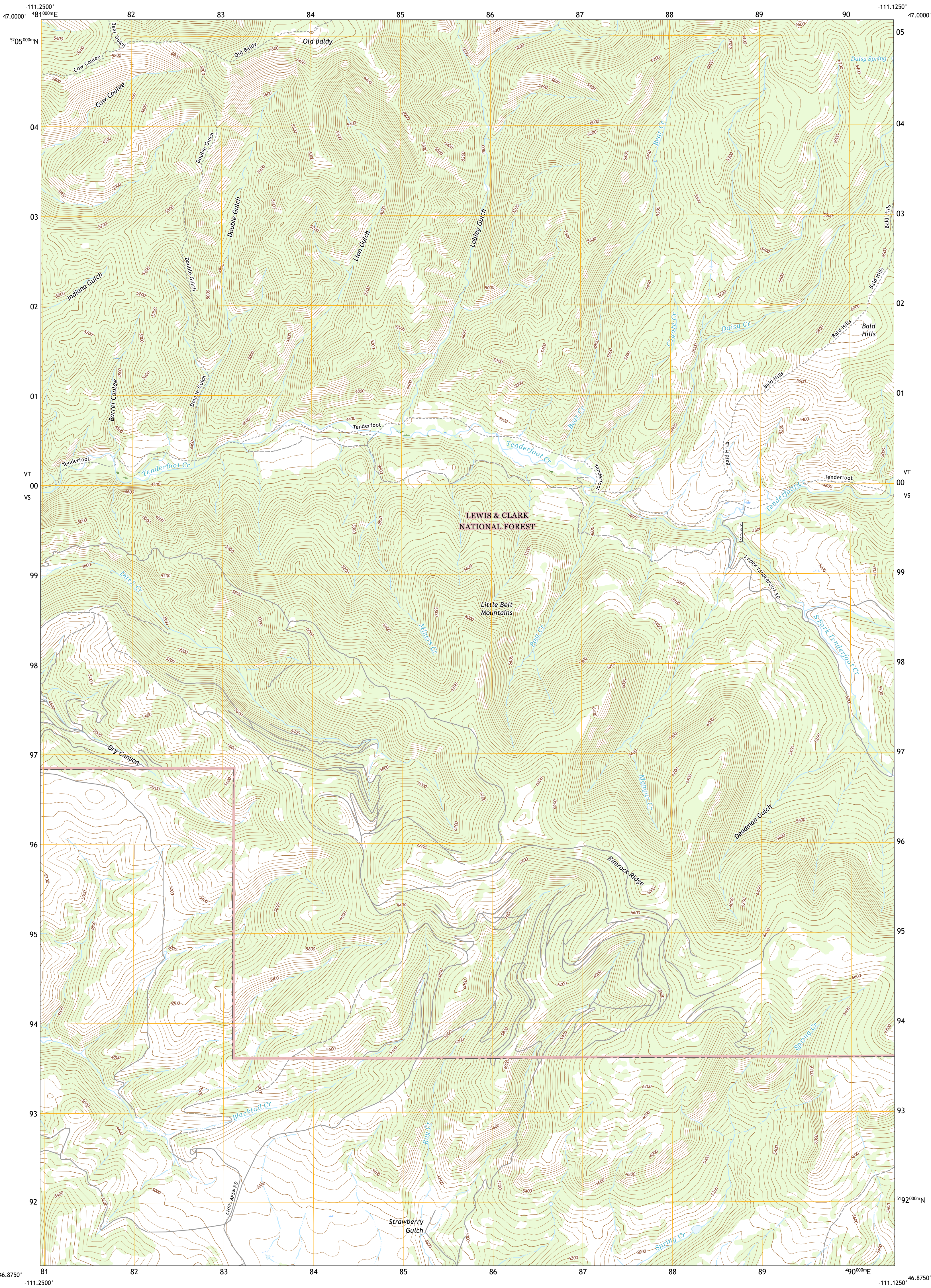




U.S. DEPARTMENT OF THE INTERIOR
U.S. GEOLOGICAL SURVEY

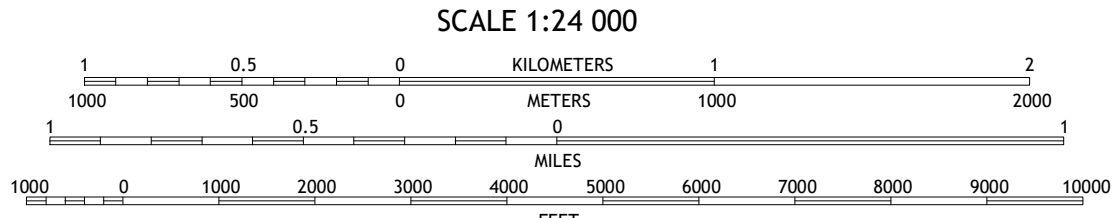
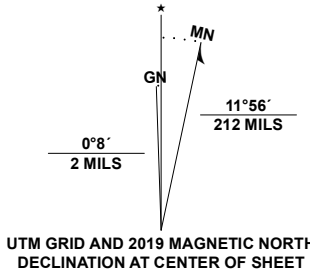


BALD HILLS QUADRANGLE
MONTANA - MEAGHER COUNTY
7.5-MINUTE SERIES



Produced by the United States Geological Survey
North American Datum of 1983 (NAD83)
World Geodetic System of 1984 (WGS84). Projection and
1 000-meter grid: Universal Transverse Mercator, Zone 12T
This map is not a legal document. Boundaries may be
generalized for this map scale. Private lands within government
reservations may not be shown. Obtain permission before
entering private lands.

Imagery.....N.A.P., August 2015 - January 2016
Roads.....U.S. Census Bureau, 2016
Roads within US Forest Service Lands.....FS Topo
Data with limited Forest Service updates, 2013 - 2017
Names.....National Hydrography Dataset, 2003 - 2019
Contours.....National Elevation Dataset, 2006
Boundaries.....Multiple sources: see metadata file, 2018
Public Land Survey System.....BLM, 2018
Wetlands.....FWS National Wetlands Inventory, 2005



1	2	3
4	5	6
7	8	9

1 Milligan
2 Deep Creek Park
3 Blankenbaker Flats
4 Lingshire NE
5 Monument Peak
6 Ellis Canyon
7 Devils Footstool
8 Sheep Mountain

ROAD CLASSIFICATION

Expressway
Secondary Hwy
Ramp
Interstate Route
FS Primary Route

Local Connector
Local Road
4WD
US Route
FS Passenger Route
State Route
FS High Clearance Route

Check with local Forest Service unit
for current travel conditions and restrictions.

BALD HILLS, MT
2020

