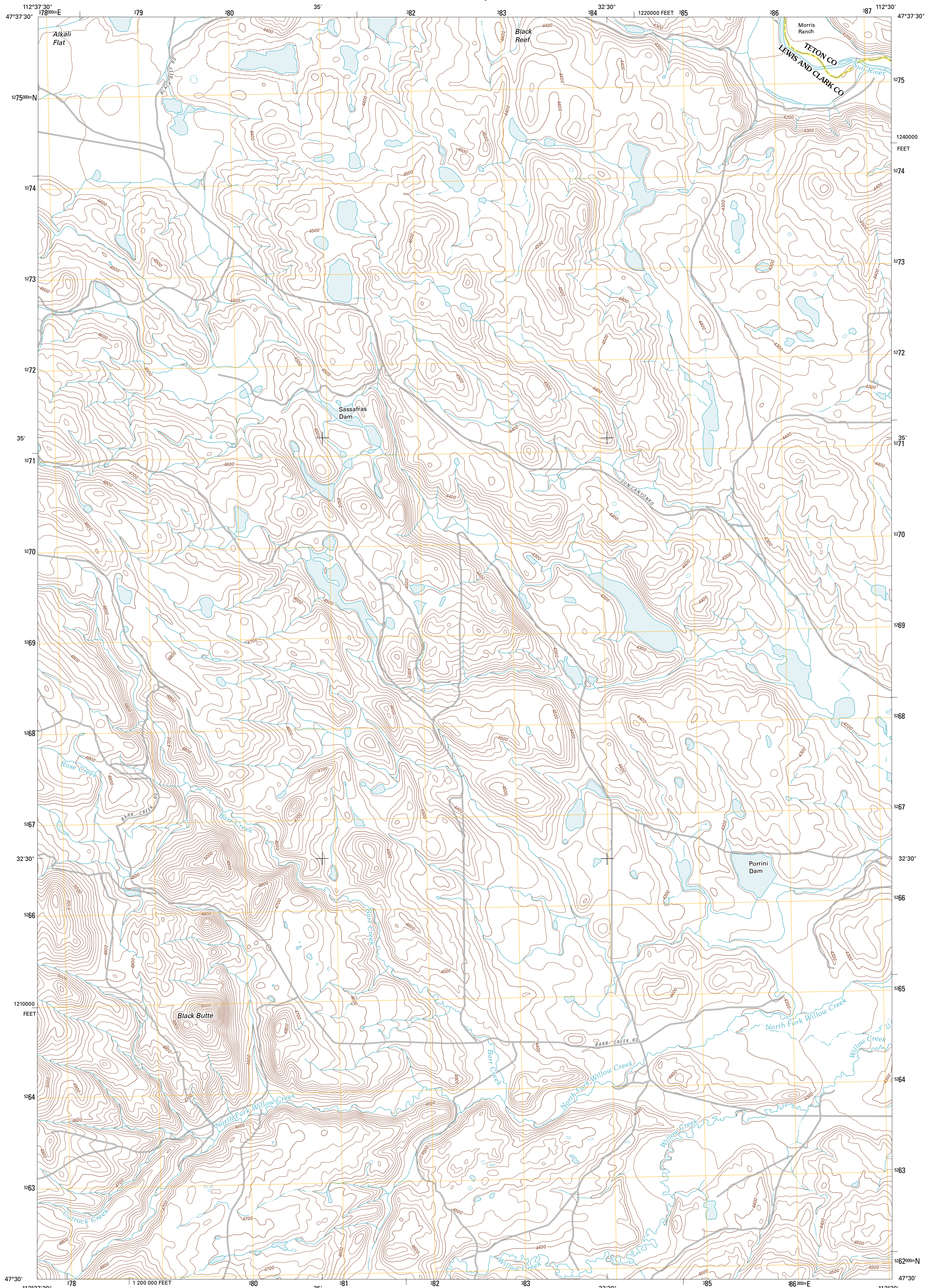




U.S. DEPARTMENT OF THE INTERIOR  
U. S. GEOLOGICAL SURVEY



BARR CREEK QUADRANGLE  
MONTANA  
7.5-MINUTE SERIES

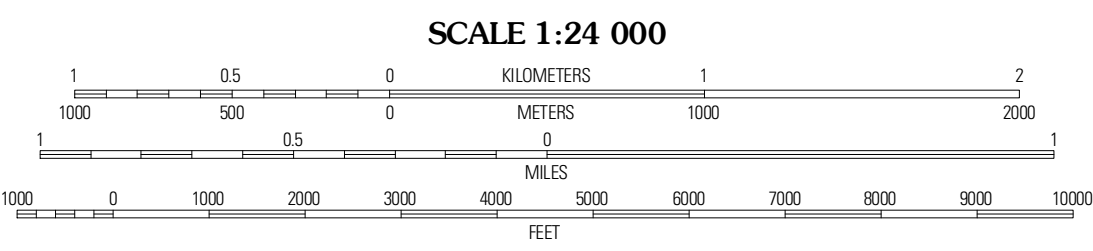


Produced by the United States Geological Survey  
North American Datum of 1983 (NAD83)  
World Geodetic System of 1984 (WGS84). Projection and  
1 000-meter grid: Universal Transverse Mercator, Zone 12T  
10 000-foot ticks: Montana Coordinate System of 1983

Imagery.....NAIP, July 2009  
Roads.....©2006-2010 Tele Atlas  
Names.....©2010 Tele Atlas  
Hydrography.....National Hydrography Dataset, 2009  
Contours.....National Elevation Dataset, 1999  
Boundaries.....Census, IBWC, IBC, USGS, 1972 - 2010

UTM GRID AND 2011 MAGNETIC NORTH  
DECLINATION AT CENTER OF SHEET

U.S. National Grid  
100,000m Square ID  
UT  
Grid Zone Designation  
12T



CONTOUR INTERVAL 20 FEET  
NORTH AMERICAN VERTICAL DATUM OF 1988

This map was produced to conform with version 0.5.10  
of the USGS US Topo Product Standard.  
A metadata file associated with this product is draft version 0.5.16



ROAD CLASSIFICATION

Interstate Route (thick red line)  
US Route (red line)  
Ramp (red line with blue triangle)  
State Route (thin red line)  
Local Road (grey line)  
4WD (dashed grey line)

QUADRANGLE LOCATION

Cadee Reef	Split Rock Lake	Pishan Reservoir
Sawtooth Ridge	Barr Creek	Split Rock Junction
Double Falls	Nolan Reservoir	Augusta

ADJOINING 7.5' QUADRANGLES

BARR CREEK, MT  
2011