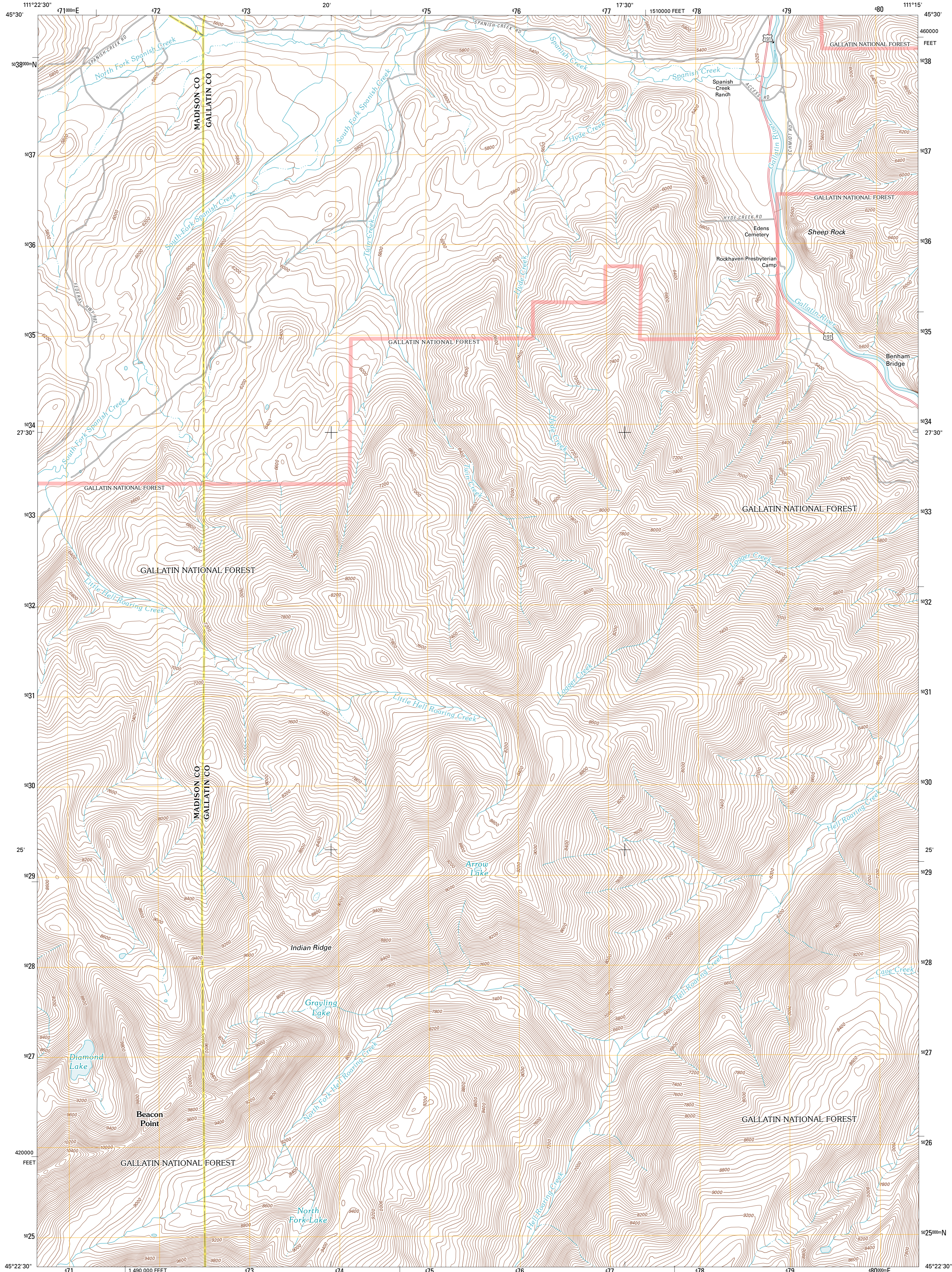




U.S. DEPARTMENT OF THE INTERIOR  
U. S. GEOLOGICAL SURVEY

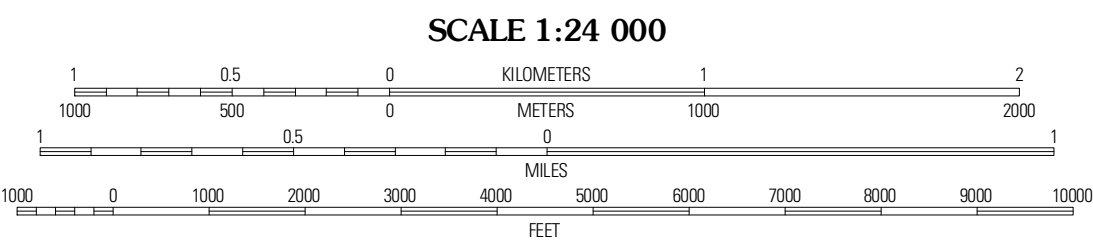
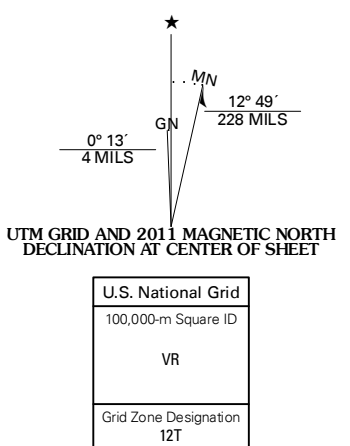


BEACON POINT QUADRANGLE  
MONTANA  
7.5-MINUTE SERIES

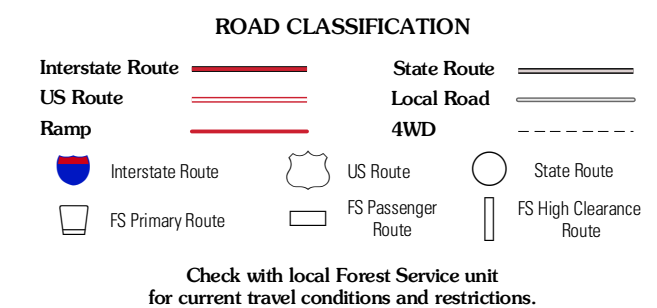
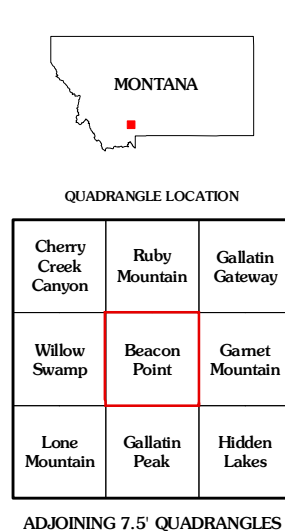


Produced by the United States Geological Survey  
North American Datum of 1983 (NAD83)  
World Geodetic System of 1984 (WGS84). Projection and  
1 000-meter grid: Universal Transverse Mercator, Zone 12T  
10 000-foot ticks: Montana Coordinate System of 1983

Imagery: NAD, June 2009  
Roads: 02/06-2010 Tele Atlas  
Roads within US Forest Service Lands: FSTopo Data  
with limited Forest Service updates, 2009  
Names: GNS, 2010  
Hydrography: National Hydrography Dataset, 2009  
Contours: National Elevation Dataset, 2001  
Boundaries: Census, IBWC, IBC, USGS, 1972 - 2010



CONTOUR INTERVAL 40 FEET  
NORTH AMERICAN VERTICAL DATUM OF 1988  
This map was produced to conform with version 0.5.10  
of the USGS US Topo Product Standard.  
A metadata file associated with this product is draft version 0.5.16



Check with local Forest Service unit  
for current travel conditions and restrictions.

BEACON POINT, MT  
2011

ADJOINING 7.5 QUADRANGLES