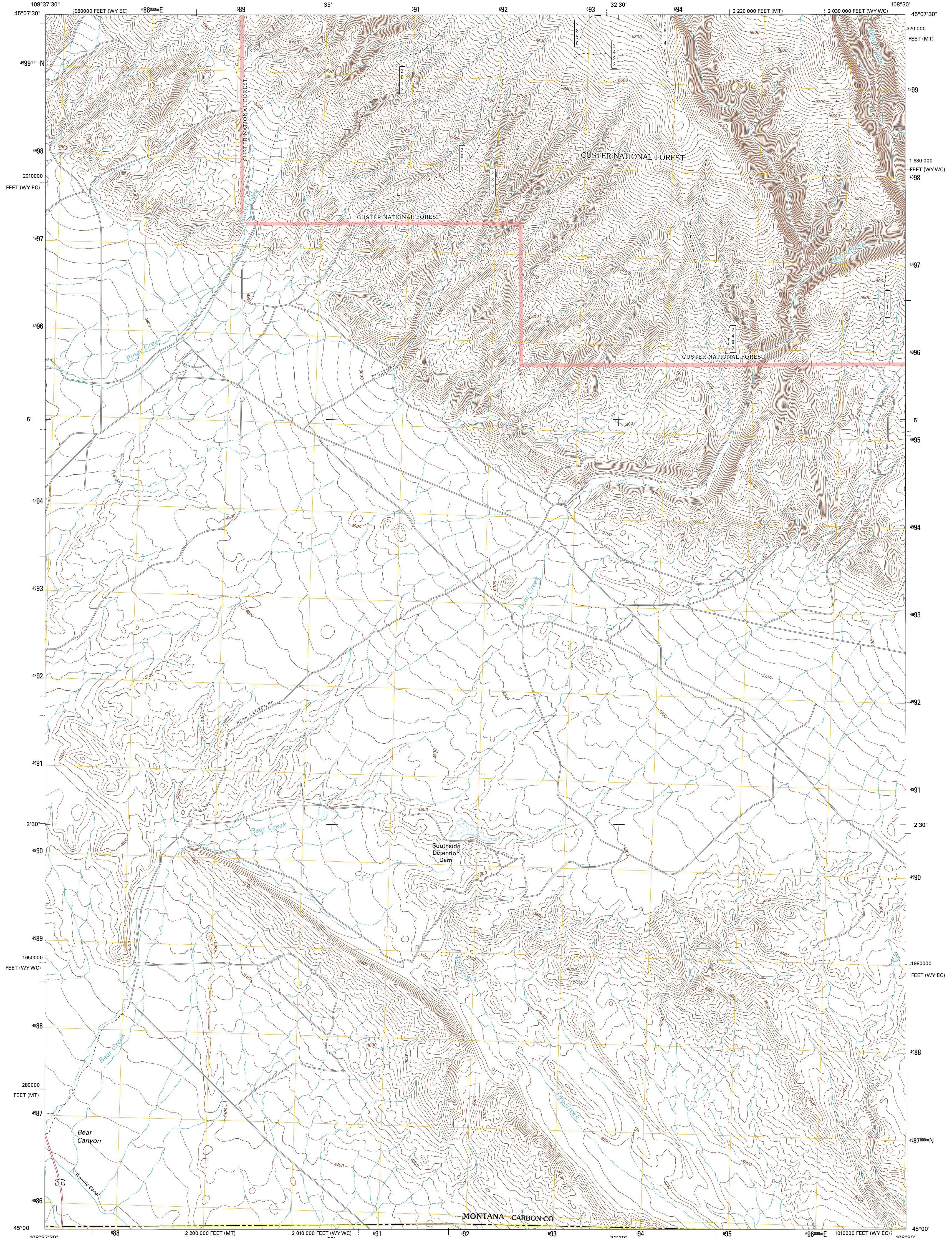




U.S. DEPARTMENT OF THE INTERIOR
U. S. GEOLOGICAL SURVEY

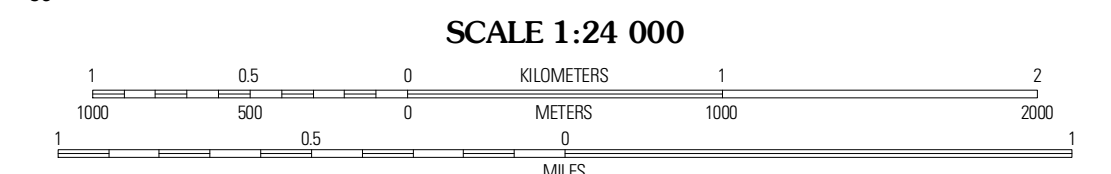
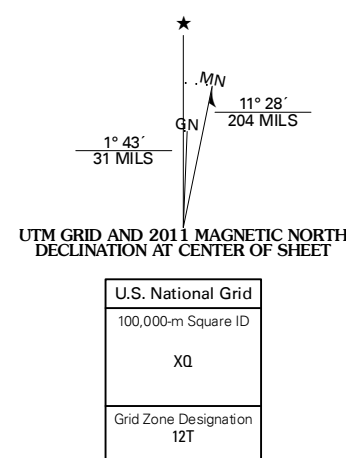


BEAR CANYON QUADRANGLE
MONTANA-WYOMING
7.5-MINUTE SERIES

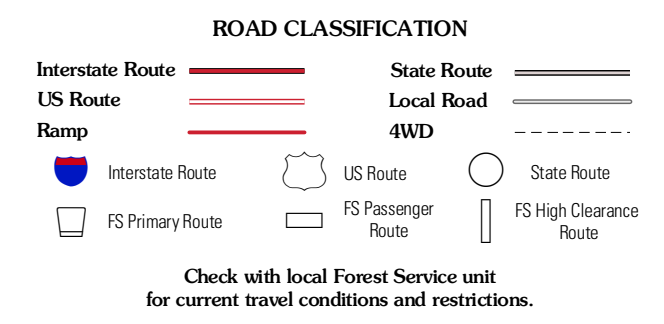
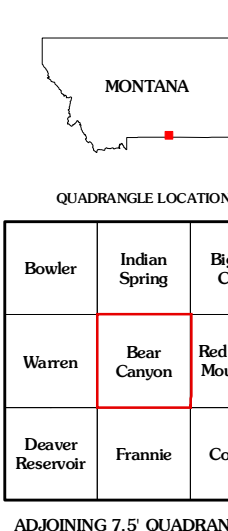


Produced by the United States Geological Survey
North American Datum of 1983 (NAD83)
World Geodetic System of 1984 (WGS84). Projection and
1 000-meter grid: Universal Transverse Mercator, Zone 12T
10 000-foot ticks: Montana Coordinate System of 1983.
Wyoming Coordinate System of 1983 (east central and west
central zones)

Imagery.....NIP, June 2009
Roads.....©2006-2010 Tele Atlas
Roads within US Forest Service Lands.....FSTopo Data
with limited Forest Service updates, 2009
Names.....GNIS, 2010
Hydrography.....National Hydrography Dataset, 2009
Contours.....National Elevation Dataset, 2002
Boundaries.....Census, IBWC, IBC, USGS, 1972 - 2010



CONTOUR INTERVAL 20 FEET
NORTH AMERICAN VERTICAL DATUM OF 1988
This map was produced to conform with version 0.5.10
of the USGS US Topo Product Standard.
A metadata file associated with this product is draft version 0.5.16



Check with local Forest Service unit
for current travel conditions and restrictions.

BEAR CANYON, MT-WY
2011

QUADRANGLE LOCATION

Bowler	Indian Spring	Big Ice Cave
Warren	Bear Canyon	Red Pryor Mountain
Deaver Reservoir	Frankie	Cowley

ADJOINING 7.5' QUADRANGLES