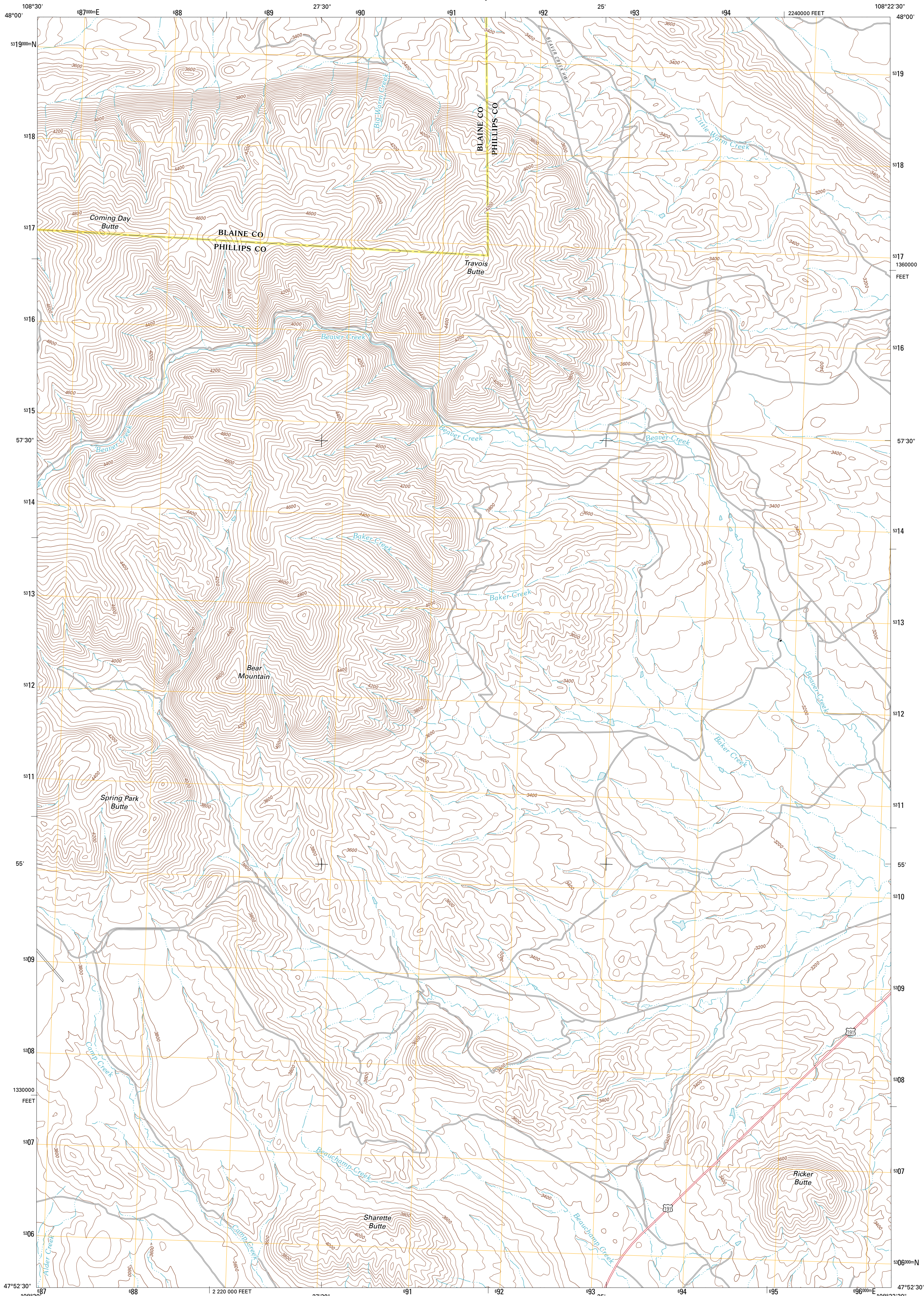




U.S. DEPARTMENT OF THE INTERIOR  
U. S. GEOLOGICAL SURVEY

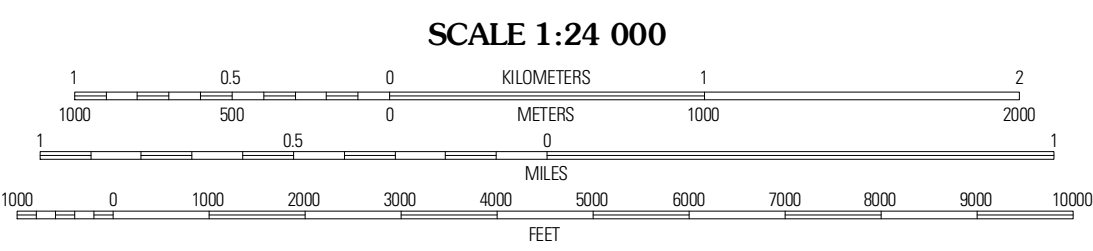
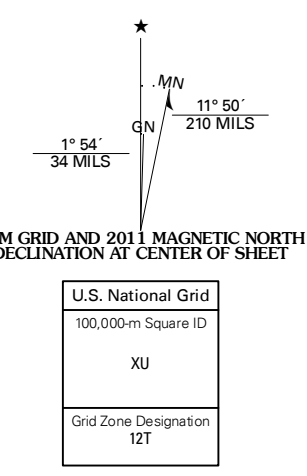


BEAR MOUNTAIN QUADRANGLE  
MONTANA  
7.5-MINUTE SERIES



Produced by the United States Geological Survey  
North American Datum of 1983 (NAD83)  
World Geodetic System of 1984 (WGS84). Projection and  
1 000-meter grid: Universal Transverse Mercator, Zone 12T  
10 000-foot ticks: Montana Coordinate System of 1983

Imagery.....NAP, July 2009  
Roads.....©2006-2010 Tele Atlas  
Names.....GNIS, 2010  
Hydrography.....National Hydrography Dataset, 2009  
Contours.....National Elevation Dataset, 1999  
Boundaries.....Census, IBWC, IBC, USGS, 1972 - 2010



CONTOUR INTERVAL 40 FEET  
NORTH AMERICAN VERTICAL DATUM OF 1988  
This map was produced to conform with version 0.5.10  
of the USGS US Topo Product Standard.  
A metadata file associated with this product is draft version 0.5.16

**ROAD CLASSIFICATION**

Interstate Route	State Route
US Route	Local Road
Ramp	4WD

**QUADRANGLE LOCATION**

Lodge Pole	Bull Coulee	Essex Lake
Zortman	Bear Mountain	Colum Butte
Hays SE	Robinson School	Bismarck Reservoir

**BEAR MOUNTAIN, MT  
2011**