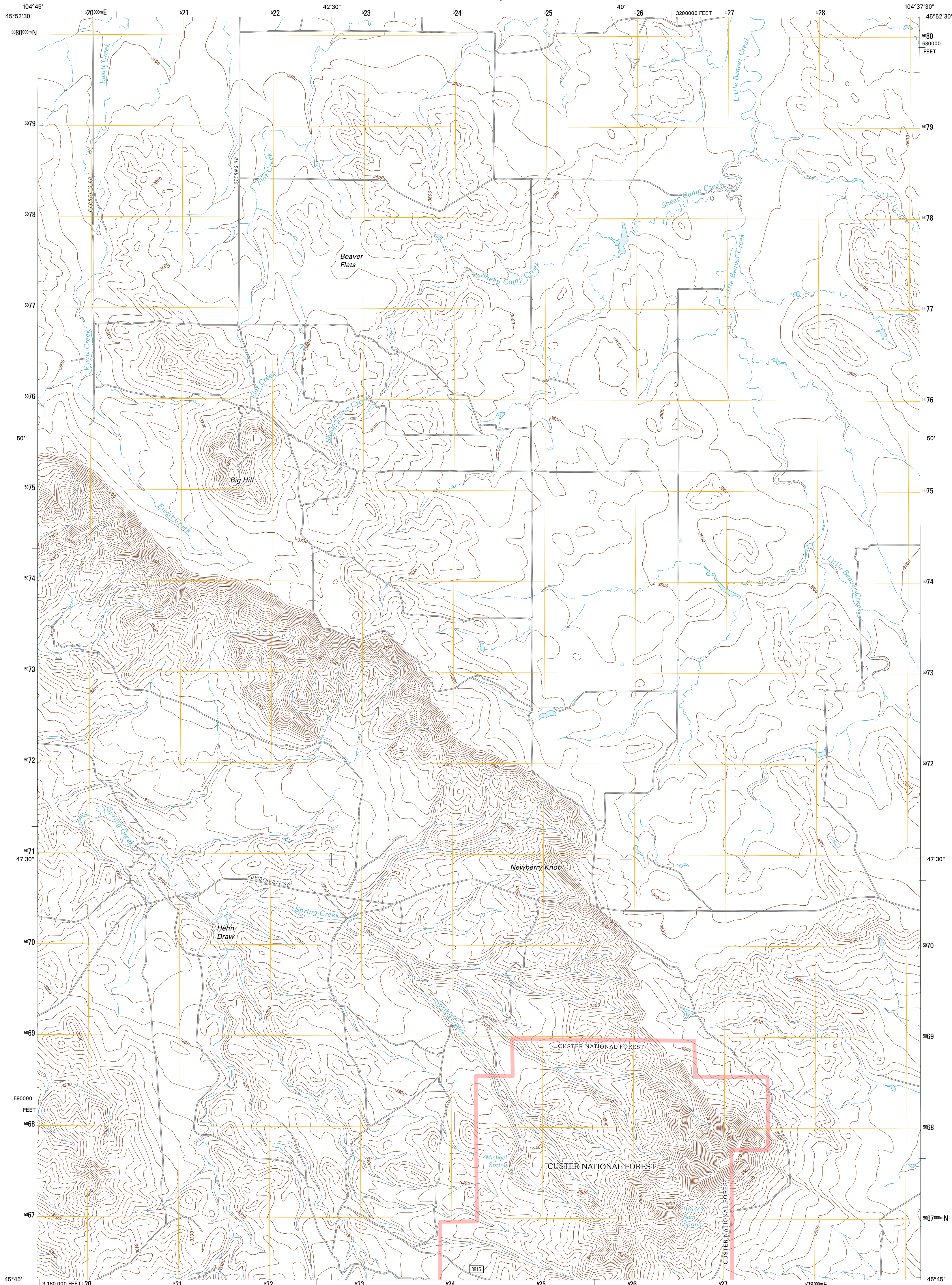




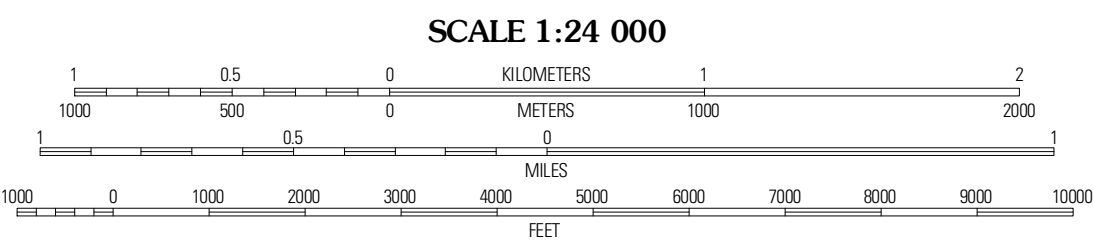
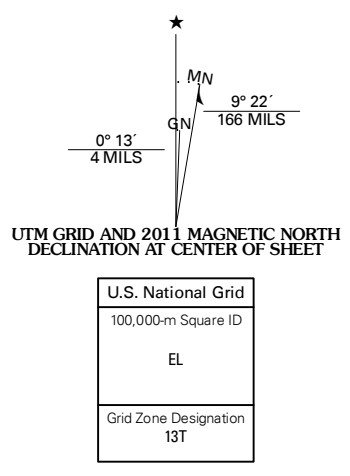
U.S. DEPARTMENT OF THE INTERIOR  
U. S. GEOLOGICAL SURVEY



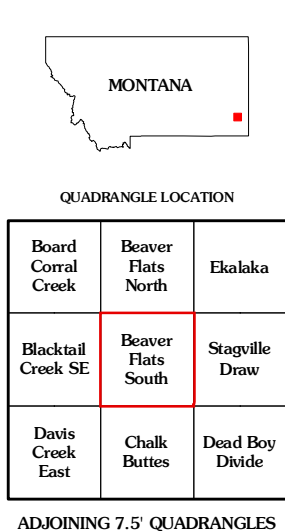
BEAVER FLATS SOUTH QUADRANGLE  
MONTANA-CARTER CO.  
7.5-MINUTE SERIES



Produced by the United States Geological Survey  
North American Datum of 1983 (NAD83)  
World Geodetic System of 1984 (WGS84). Projection and  
1 000-meter grid: Universal Transverse Mercator, Zone 13T  
10 000-foot ticks: Montana Coordinate System of 1983



CONTOUR INTERVAL 40 FEET  
NORTH AMERICAN VERTICAL DATUM OF 1988  
This map was produced to conform with version 0.5.10  
of the USGS US Topo Product Standard.  
A metadata file associated with this product is draft version 0.5.16



**ROAD CLASSIFICATION**

Interstate Route	State Route
US Route	Local Road
Ramp	4WD

Interstate Route (Blue shield)  
 US Route (Red shield)  
 Ramp (Red line with blue arrow)  
 State Route (Black line)  
 Local Road (Grey line)  
 4WD (Red dashed line)  
 FS Primary Route (Red line with blue arrow)  
 US Route (Red shield)  
 FS Passenger Route (Red line with blue arrow)  
 State Route (Black line)  
 FS High Clearance Route (Red line with blue arrow)

Check with local Forest Service unit for current travel conditions and restrictions.

Imagery: NADP, July 2009  
Roads: 2006-2010 Tele Atlas  
Roads within US Forest Service Lands: FSTopo Data with limited Forest Service updates, 2009  
Names: GNIS, 2010  
Hydrography: National Hydrography Dataset, 2009  
Contours: National Elevation Dataset, 2009  
Boundaries: Census, IBWC, IBC, USGS, 1972 - 2010

**ADJOINING 7.5 QUADRANGLES**

Board Coral Creek	Beaver Flats North	Ekabika
Blacktail Creek SE	Beaver Flats South	Sagefile Dew
Davis Creek East	Chalk Buttes	Dead Boy Divide

BEAVER FLATS SOUTH, MT  
2011