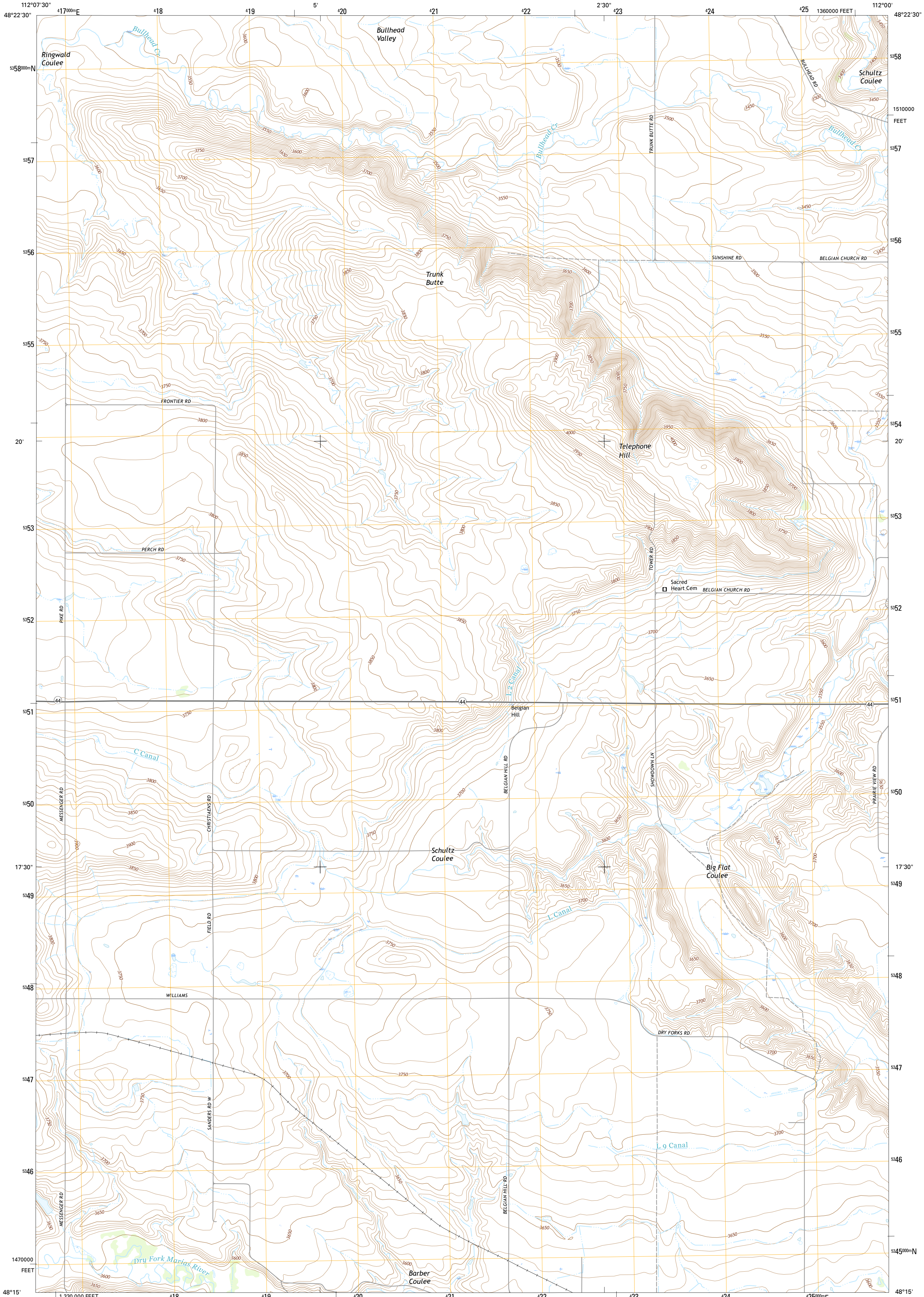




U.S. DEPARTMENT OF THE INTERIOR
U.S. GEOLOGICAL SURVEY



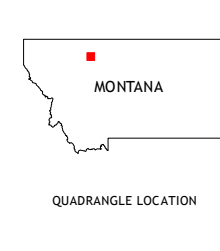
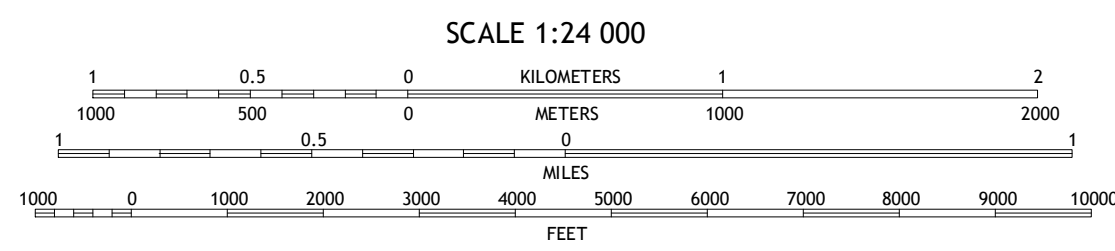
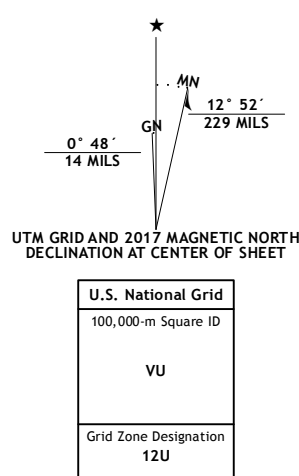
BELGIAN HILL QUADRANGLE
MONTANA-PONDERA CO.
7.5-MINUTE SERIES



Produced by the United States Geological Survey
North American Datum of 1983 (NAD83)
World Geodetic System of 1984 (WGS84). Projection and
1 000-meter grid: Universal Transverse Mercator, Zone 12U
10 000-foot ticks: Montana Coordinate System of 1983

This map is not a legal document. Boundaries may be
generalized for this map scale. Private lands within government
reservations may not be shown. Obtain permission before
entering private lands.

Imagery.....NAIP, January 2016
Roads.....U.S. Census Bureau, 2015 - 2016
Names.....GNS, 2016
Hydrography.....National Hydrography Dataset, 2016
Contours.....National Elevation Dataset, 2008
Boundaries.....Multiple sources; see metadata file 1972 - 2016
Public Land Survey System.....BLM, 2016
Wetlands.....FWS National Wetlands Inventory 1977 - 2014



ROAD CLASSIFICATION

Expressway	Local Connector
Secondary Hwy	Local Road
Ramp	4WD
Interstate Route	US Route
	State Route

CONTOUR INTERVAL 10 FEET
NORTH AMERICAN VERTICAL DATUM OF 1988

This map was produced to conform with the
National Geospatial Program US Topo Product Standard, 2011.
A metadata file associated with this product is draft version 0.6.19

1	2	3	1 Abbott Lake
2	3	4	2 Cactus Flat
3	4	5	3 Ledger NW
4	5	6	4 Valler East
5	6	7	5 Pioneer School
6	7	8	6 Lone Man Coulee East
7	8		7 Sam George Hill
8			8 Conrad

BELGIAN HILL, MT
2017

