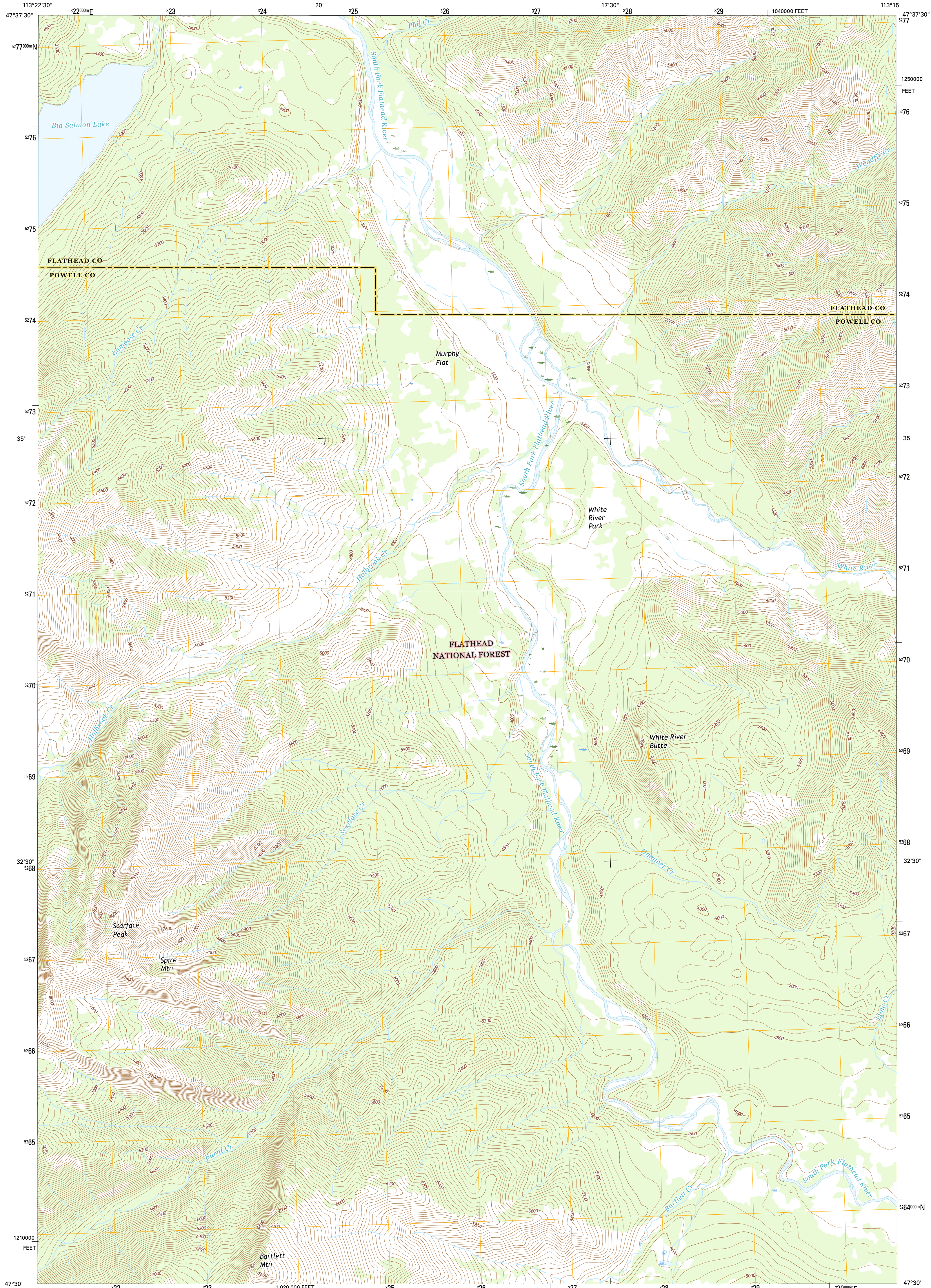




U.S. DEPARTMENT OF THE INTERIOR
U.S. GEOLOGICAL SURVEY



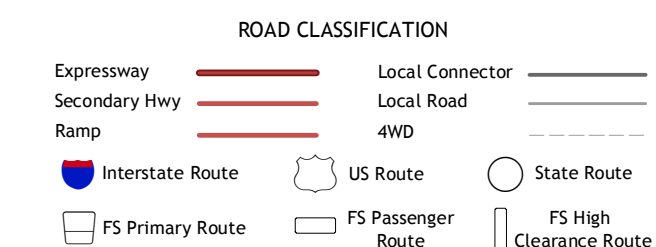
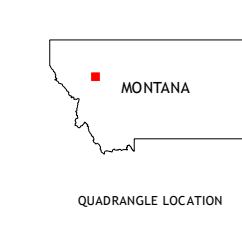
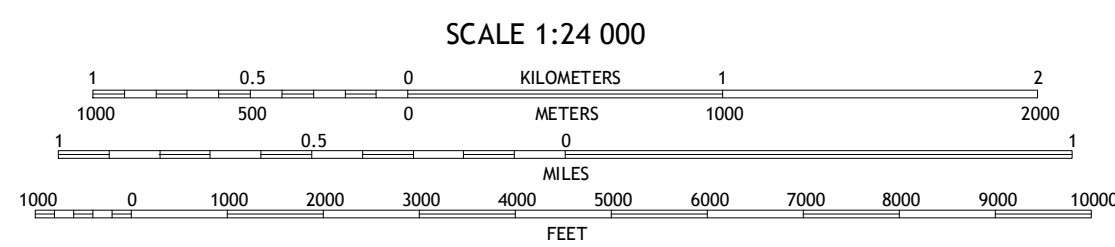
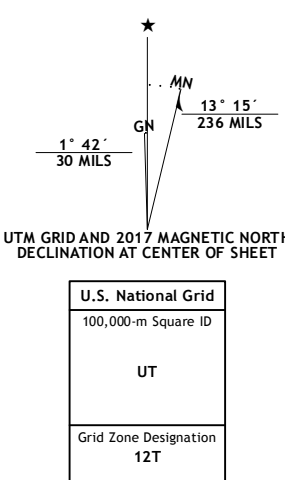
BIG SALMON LAKE EAST QUADRANGLE
MONTANA
7.5-MINUTE SERIES



Produced by the United States Geological Survey
North American Datum of 1983 (NAD83)
World Geodetic System of 1984 (WGS84), Projection and
1 000-meter grid: Universal Transverse Mercator, Zone 12T
10 000-foot ticks: Montana Coordinate System of 1983

This map is not a legal document. Boundaries may be
generalized for this map scale. Private lands within government
reservations may not be shown. Obtain permission before
entering private lands.

Imagery.....NIP, January 2016
Roads.....U.S. Census Bureau, 2015 - 2016
Roads within US Forest Service Lands.....FS Topo Data
with limited Forest Service updates, 2012 - 2016
Names.....GNIS, 2016
Hydrography.....National Hydrography Dataset, 2016
Contours.....National Elevation Dataset, 1999
Boundaries.....Multiple sources; see metadata file 1972 - 2016
Public Land Survey System.....BLM, 2016
Wetlands.....FWS National Wetlands Inventory 1977 - 2014



Check with local Forest Service unit
for current travel conditions and restrictions.

BIG SALMON LAKE EAST, MT
2017

1	2	3
4	5	6
7	8	

ADJOINING QUADRANGLES

- 1 Marmot Mountain
- 2 Pagoda Mountain
- 3 Amphitheatre Mountain
- 4 Big Salmon Lake West
- 5 Haystack Mountain
- 6 Shaw Creek
- 7 Una Mountain
- 8 Pilot Peak



NSN 7540-01-016-3770-4
NGA REF NO. USGS X 24 K 3 8 2