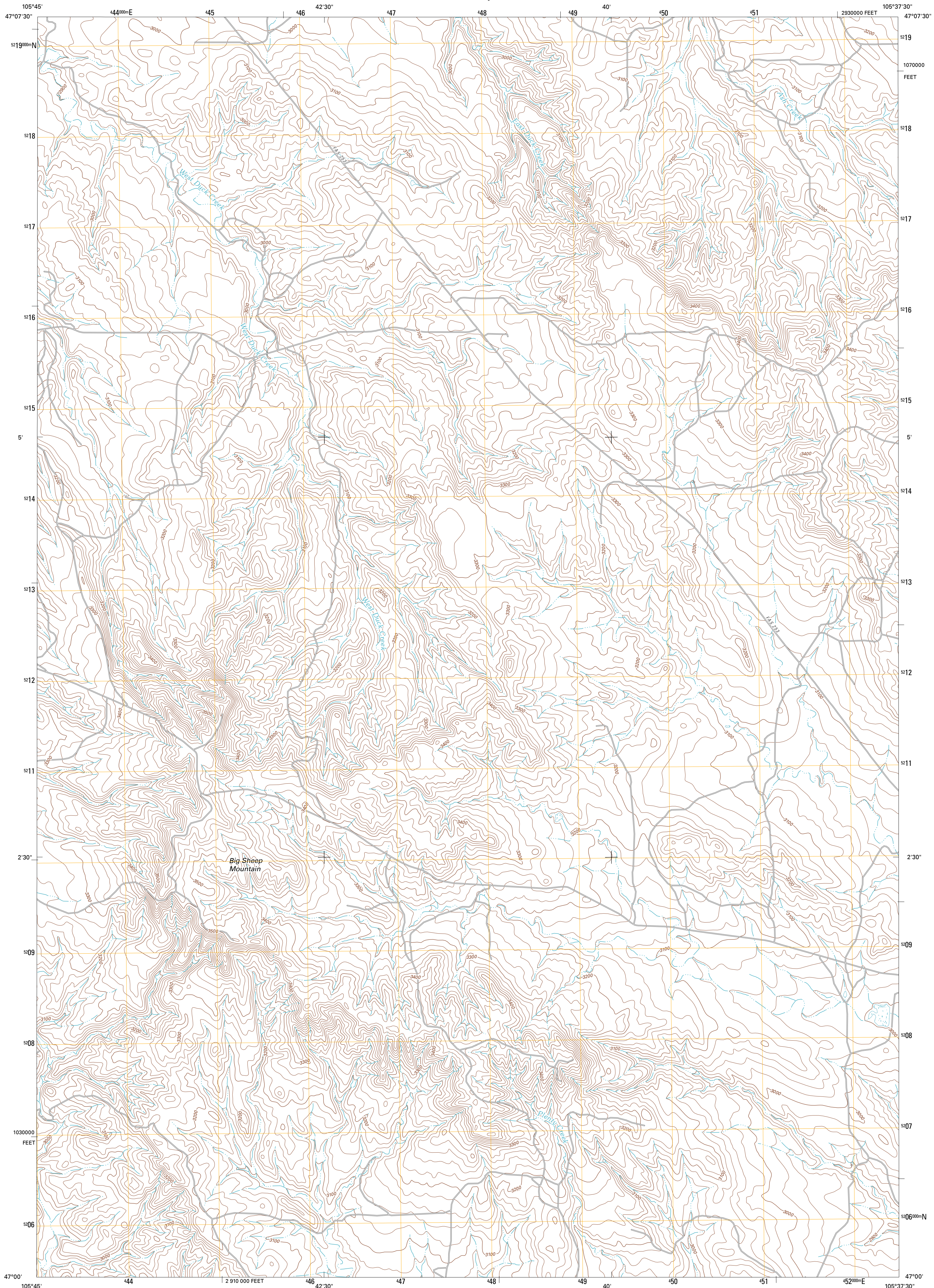




U.S. DEPARTMENT OF THE INTERIOR
U. S. GEOLOGICAL SURVEY



BIG SHEEP MOUNTAIN QUADRANGLE
MONTANA-PRAIRIE CO.
7.5-MINUTE SERIES

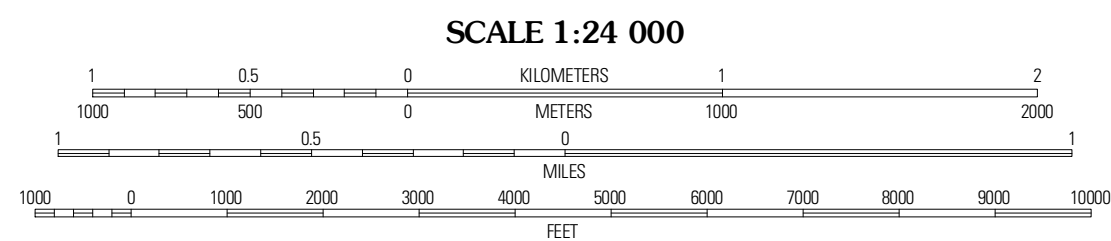


Produced by the United States Geological Survey
North American Datum of 1983 (NAD83)
World Geodetic System of 1984 (WGS84). Projection and
1 000-meter grid: Universal Transverse Mercator, Zone 13T
10 000-foot ticks: Montana Coordinate System of 1983

Imagery.....NAIP, July 2009
Roads.....©2006-2010 Tele Atlas
Names.....GNIS, 2010
Hydrography.....National Hydrography Dataset, 2009
Contours.....National Elevation Dataset, 2009
Boundaries.....Census, IBWC, IBC, USGS, 1972 - 2010

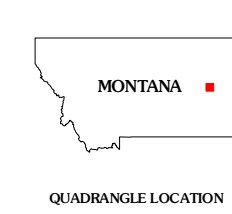
UTM GRID AND 2011 MAGNETIC NORTH
DECLINATION AT CENTER OF SHEET

| | |
|-----------------------|---------------------|
| U.S. National Grid | 100 000-m Square ID |
| DN | |
| Grid Zone Designation | 13T |



CONTOUR INTERVAL 20 FEET
NORTH AMERICAN VERTICAL DATUM OF 1988

This map was produced to conform with version 0.5.10
of the USGS US Topo Product Standard.
A metadata file associated with this product is draft version 0.5.16



QUADRANGLE LOCATION

| | | |
|-----------------------------|-------------------------|---------------|
| Wardens Mountain SE | Big Sheep Mountain | Becker Dam |
| Little Sheep Mountain | South Fork Reservoir | McCloud |

ROAD CLASSIFICATION

| | |
|------------------|-------------|
| Interstate Route | State Route |
| US Route | Local Road |
| Ramp | 4WD |
| Interstate Route | US Route |
| | State Route |

BIG SHEEP MOUNTAIN, MT
2011