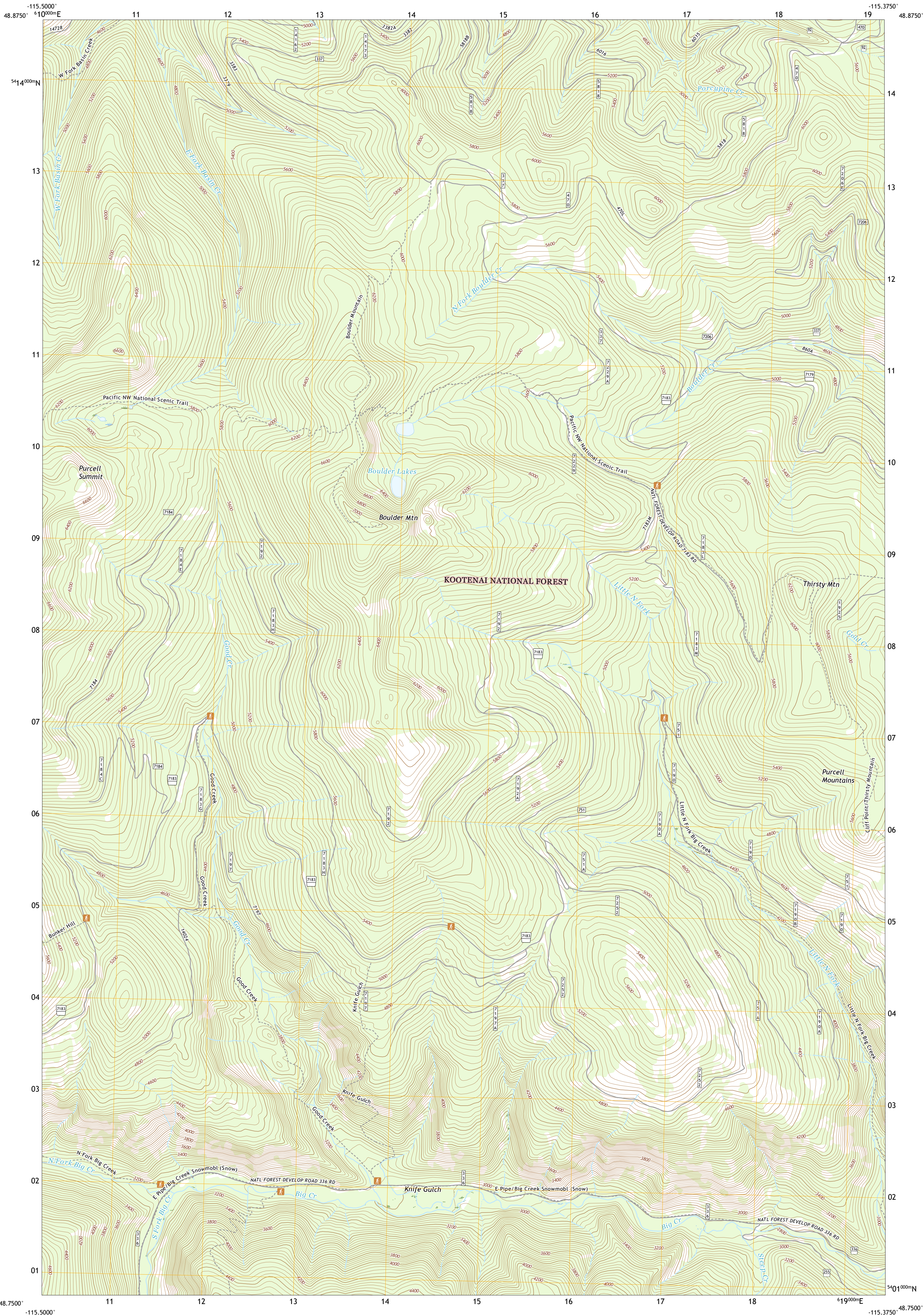




U.S. DEPARTMENT OF THE INTERIOR
U.S. GEOLOGICAL SURVEY



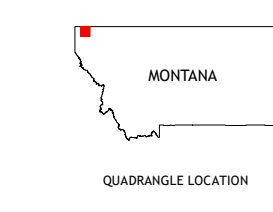
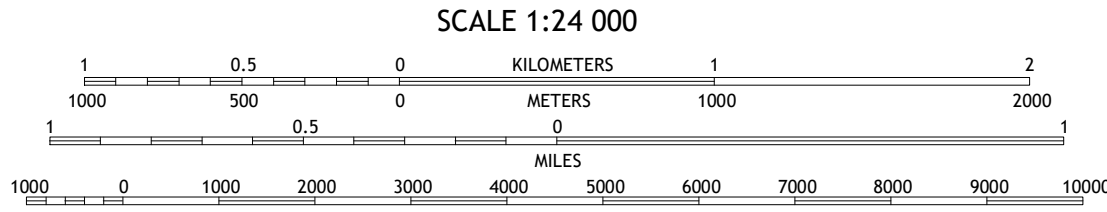
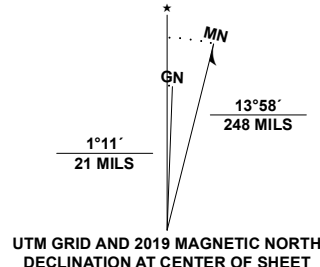
BOULDER LAKES QUADRANGLE
MONTANA - LINCOLN COUNTY
7.5-MINUTE SERIES



Produced by the United States Geological Survey

North American Datum of 1983 (NAD83)
World Geodetic System of 1984 (WGS84). Projection and
1 000-meter grid: Universal Transverse Mercator, Zone 11U
This map is not a legal document. Boundaries may be
generalized for this map scale. Private lands within government
reservations may not be shown. Obtain permission before
entering private lands.

Imagery.....NAIP, Not Available
Roads.....U.S. Census Bureau, 2016
Roads within US Forest Service Lands.....FS Topo Data
Names.....with limited Forest Service updates, 2013
Hydrography.....National Hydrography Dataset, 2002 - 2019
Contours.....National Elevation Dataset, 2000 - 2006
Boundaries.....Multiple sources: see metadata file 2018 - 2019
Public Land Survey System.....BLM, 2018
Wetlands.....FWS National Wetlands Inventory, 2009



| | | |
|---|---|---|
| 1 | 2 | 3 |
| 4 | 5 | 6 |
| 7 | 8 | 9 |

ADJOINING QUADRANGLES

1 Mount Henry
2 Robinson Mountain
3 Red Mountain
4 Lost Horse Mountain
5 Webb Mountain
6 Pink Mountain
7 Parsnip Mountain
8 Inch Mountain

| ROAD CLASSIFICATION | |
|---------------------|-------------------------|
| Expressway | Local Connector |
| Secondary Hwy | Local Road |
| Ramp | 4WD |
| Interstate Route | US Route |
| FS Primary Route | FS Passenger Route |
| | FS High Clearance Route |
| | State Route |

Check with local Forest Service unit for current travel conditions and restrictions.

BOULDER LAKES, MT
2020

