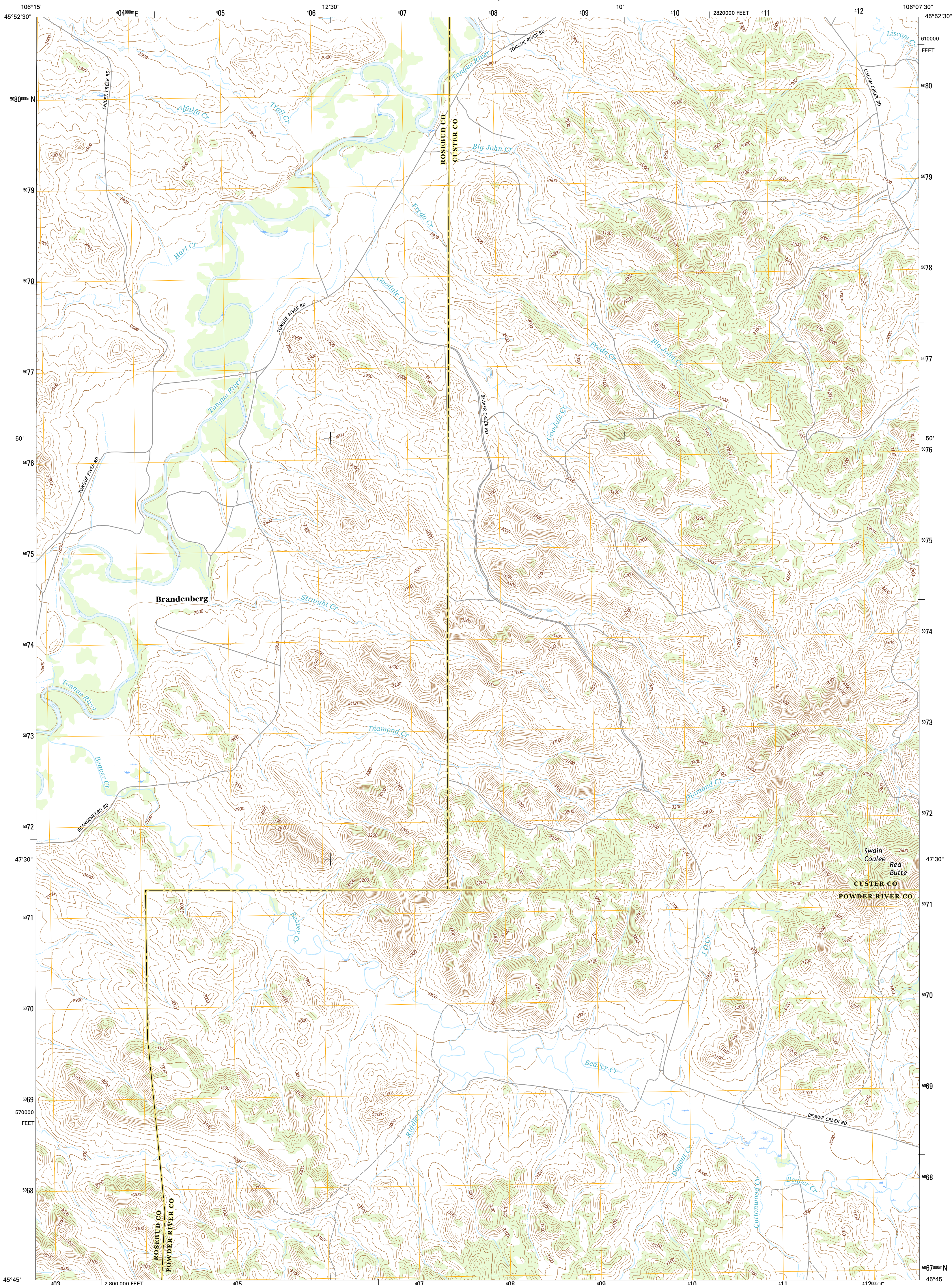




U.S. DEPARTMENT OF THE INTERIOR
U.S. GEOLOGICAL SURVEY



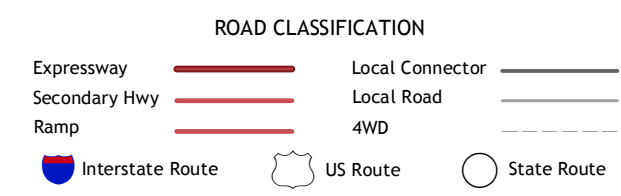
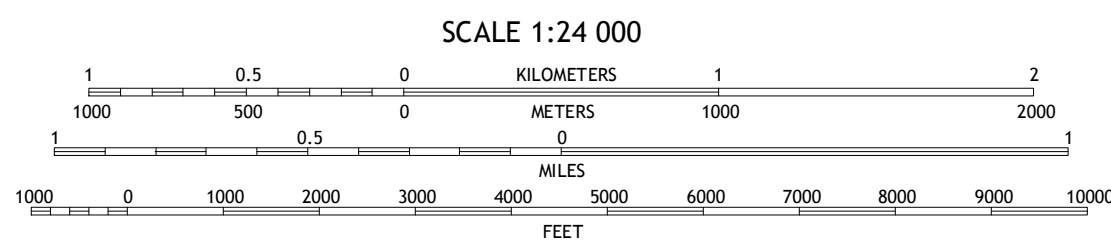
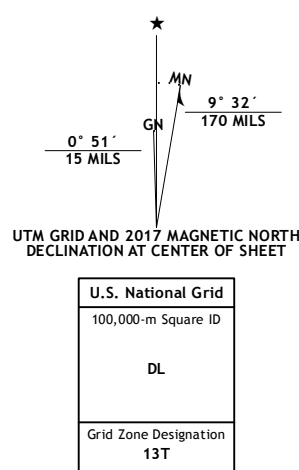
BRANDENBERG QUADRANGLE
MONTANA
7.5-MINUTE SERIES



Produced by the United States Geological Survey
 North American Datum of 1983 (NAD83)
 World Geodetic System of 1984 (WGS84). Projection and 1 000-meter grid: Universal Transverse Mercator, Zone 13T 10 000-foot ticks: Montana Coordinate System of 1983

This map is not a legal document. Boundaries may be generalized for this map scale. Private lands within government reservations may not be shown. Obtain permission before entering private lands.

Imagery	NAP, January 2016
Roads	U.S. Census Bureau, 2015 - 2016
Names	GNIS, 2016
Hydrography	National Hydrography Dataset, 2016
Contours	National Elevation Dataset, 2009
Boundaries	Multiple sources; see metadata file 1072 - 2016
Public Land Survey System	BLM, 2016
Wetlands	FWS National Wetlands Inventory 1977 - 2014



CONTOUR INTERVAL 20 FEET
 NORTH AMERICAN VERTICAL DATUM OF 1988

This map was produced to conform with the National Geospatial Program US Topo Product Standard, 2011. A metadata file associated with this product is draft version 0.6.19

1	2	3
4	5	6
7	8	9

ADJOINING QUADRANGLES

1 John Hen Creek
 2 Brandenburg NW
 3 S H School
 4 Hammond Draw
 5 Hayes Point
 6 Ashland NE
 7 Cook Creek Reservoir
 8 Beaver Creek School

BRANDENBERG, MT
2017

