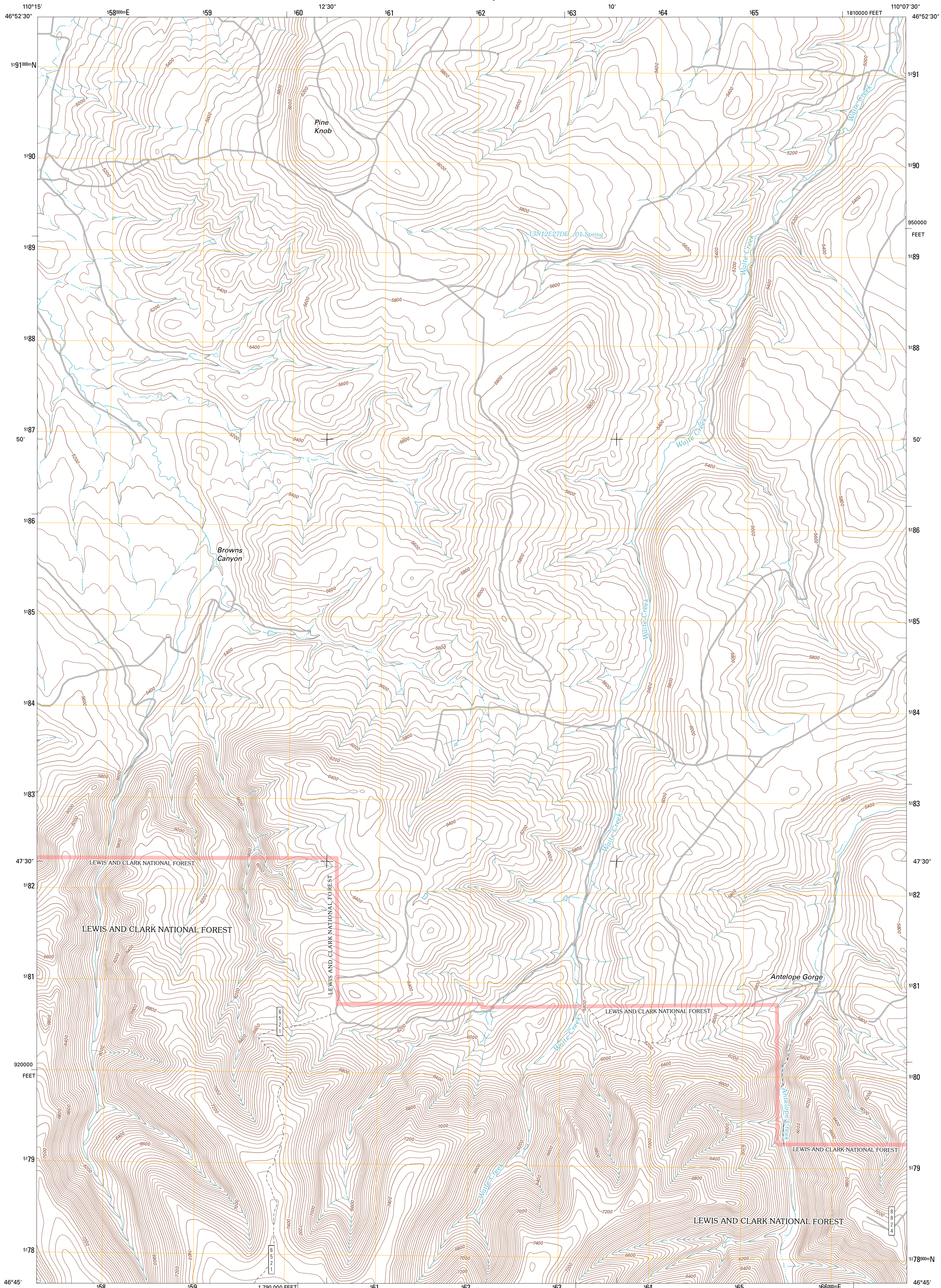




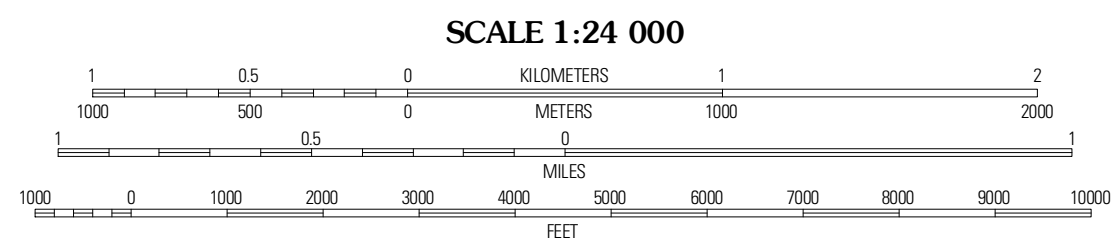
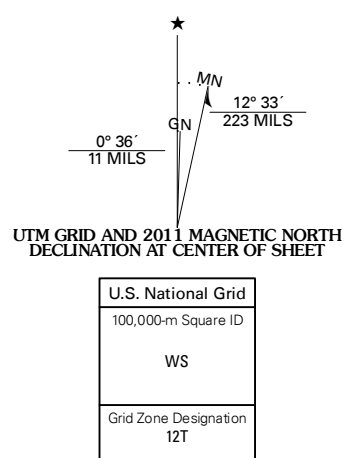
U.S. DEPARTMENT OF THE INTERIOR
U. S. GEOLOGICAL SURVEY



BROWNS CANYON QUADRANGLE
MONTANA-JUDITH BASIN CO.
7.5-MINUTE SERIES

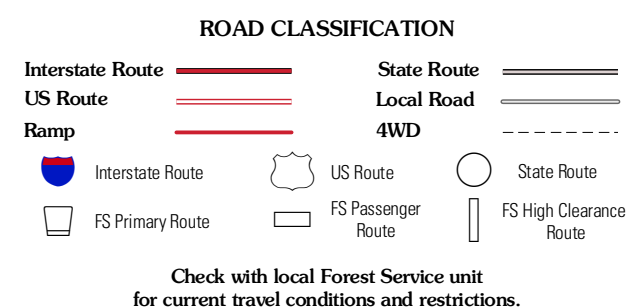


Produced by the United States Geological Survey
North American Datum of 1983 (NAD83)
Roads.....1/2006-2010 Tele Atlas
Roads within US Forest Service Lands.....FSTopo Data
with limited Forest Service updates, 2009
Names.....GNIS, 2010
Hydrography.....National Hydrography Dataset, 2009
Contours.....National Elevation Dataset, 2006
Boundaries.....Census, IBC, USGS, 1972 - 2010



QUADRANGLE LOCATION

Woodward Mountain	Red Hill	Utica
Indian Hill	Browns Canyon	Itin Sisters
Daisy Peak	Haymaker Narrows	Jellison Place



BROWNS CANYON, MT
2011

ADJOINING 7.5 QUADRANGLES