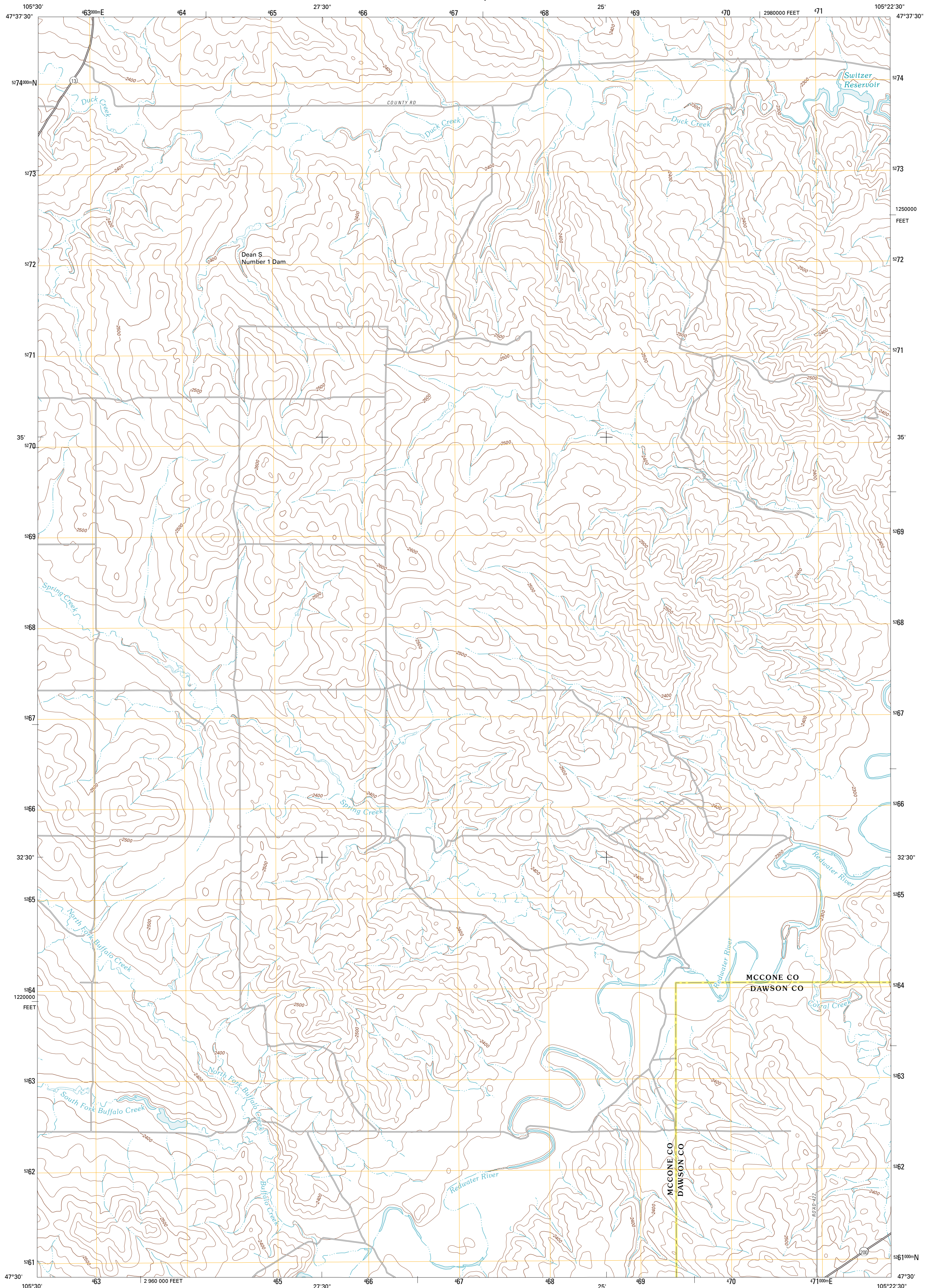




U.S. DEPARTMENT OF THE INTERIOR  
U. S. GEOLOGICAL SURVEY



BUFFALO CREEK QUADRANGLE  
MONTANA  
7.5-MINUTE SERIES

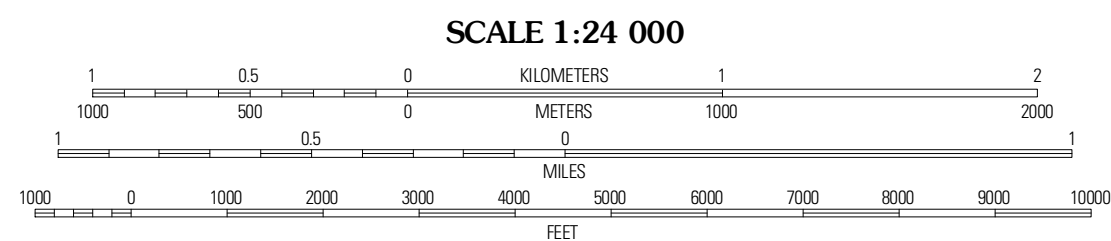


Produced by the United States Geological Survey  
North American Datum of 1983 (NAD83)  
World Geodetic System of 1984 (WGS84). Projection and  
1 000-meter grid: Universal Transverse Mercator, Zone 13T  
10 000-foot ticks: Montana Coordinate System of 1983

Imagery.....NAIP, July 2009  
Roads.....©2006-2010 Tele Atlas  
Names.....©2006-2010 Tele Atlas  
Hydrography.....National Hydrography Dataset, 2009  
Contours.....National Elevation Dataset, 2009  
Boundaries.....Census, IBWC, IBC, USGS, 1972 - 2010

UTM GRID AND 2011 MAGNETIC NORTH  
DECLINATION AT CENTER OF SHEET

|                       |          |
|-----------------------|----------|
| U.S. National Grid    | 0° 00'   |
| DN                    | 178° 00' |
| Grid Zone Designation | 13T      |



SCALE 1:24 000  
CONTOUR INTERVAL 20 FEET  
NORTH AMERICAN VERTICAL DATUM OF 1988  
This map was produced to conform with version 0.5.10  
of the USGS US Topo Product Standard.  
A metadata file associated with this product is draft version 0.5.16



ROAD CLASSIFICATION

|                  |             |
|------------------|-------------|
| Interstate Route | State Route |
| US Route         | Local Road  |
| Ramp             | 4WD         |

Legend symbols for Interstate Route, US Route, Ramp, State Route, Local Road, and 4WD.

QUADRANGLE LOCATION

|                       |                 |                  |
|-----------------------|-----------------|------------------|
| Hadburgh Reservoir    | Beery Reservoir | Buffalo Creek NE |
| Hadburgh Reservoir SE | Buffalo Creek   | Buffalo Creek SE |
| Circle                | Woodhurst Hill  | Olson Code North |

BUFFALO CREEK, MT  
2011

ADJOINING 7.5' QUADRANGLES